

WAAS CH 61216 W20A	APP CRS 200°	Rwy Idg 6100 TDZE 3786 Apt Elev 3788
--	------------------------	---

RNAV (GPS) RWY 20

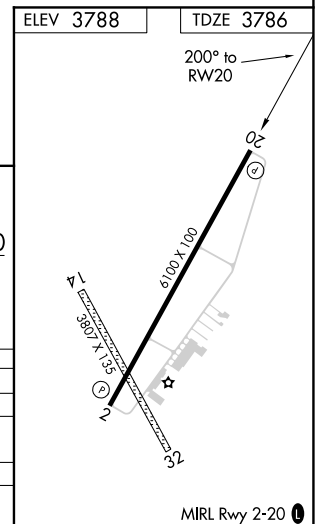
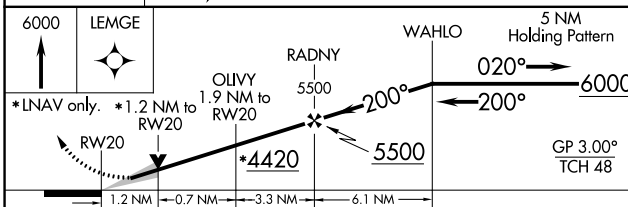
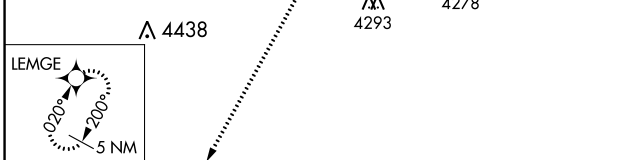
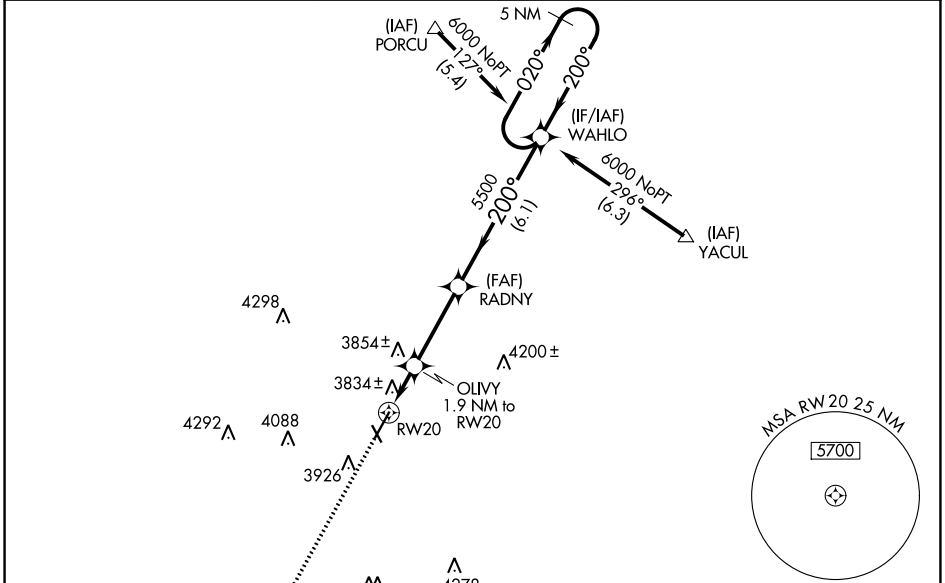
HEREFORD MUNI (HR.X)

RNP APCH.

▼ For uncompensated Baro-VNAV systems, LNAV/VNAV NA below -22°C (-7°F) or above 41°C (105°F).
 ▲ When local altimeter setting not received, use Rick Husband Amarillo Intl altimeter setting: Increase LPV DA to 4098 feet and all Cats visibility ¼ SM, increase LNAV/VNAV DA to 4232 feet and all Cats visibility ¼ SM, increase all MDA 120 feet; increase LNAV Cats C/D visibility ½ SM, increase Circling Cat C visibility ½ SM and Cat D visibility ½ SM. Baro-VNAV NA when using Rick Husband Amarillo Intl altimeter setting. VDP NA with Rick Husband Amarillo Intl altimeter setting.

MISSED APPROACH:
Climb to 6000 direct LEMGE and hold.

AWOS-3 118.05	AMARILLO APP CON ★ 119.5 307.0	UNICOM 122.8 (CTAF) ①
-------------------------	--	---------------------------------



CATEGORY	A	B	C	D
LPV DA	3986-¾ 200 (200-¾)			
LNAV/ VNAV DA	4120-1¼ 334 (400-1¼)			
LNAV MDA	4220-1	434 (500-1)	4220-1¼	434 (500-1¼)
CIRCLING	4280-1	492 (500-1)	4440-1¾	4620-2¾
			652 (700-¾)	832 (900-2¾)

SC-2, 30 DEC 2021 to 27 JAN 2022

SC-2, 30 DEC 2021 to 27 JAN 2022