

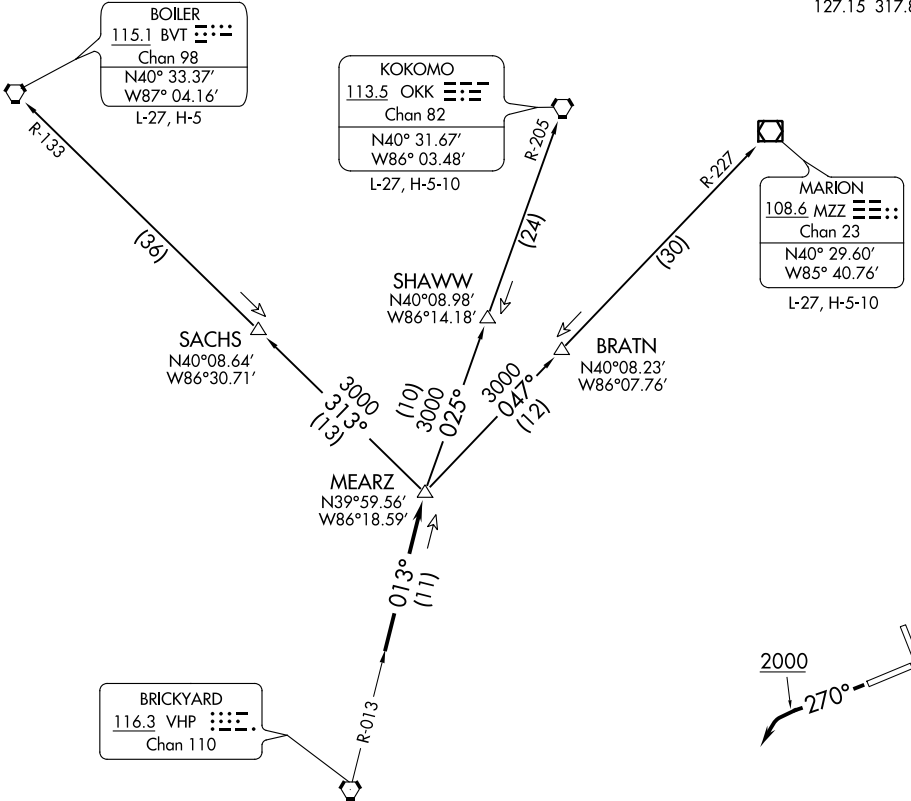
(MEARZ6.MEARZ) 20086
MEARZ SIX DEPARTURE

AL-6452 (FAA)

INDIANAPOLIS RGNL (MQJ)
 INDIANAPOLIS, INDIANA

**TOP ALTITUDE:
 ASSIGNED BY ATC**

AWOS-3
 124.175
 CLNC DEL
 119.25
 INDIANAPOLIS DEP CON
 127.15 317.8



EC-2, 30 DEC 2021 to 27 JAN 2022

EC-2, 30 DEC 2021 to 27 JAN 2022

TAKEOFF MINIMUMS

Rwys 7, 16, 25: Standard.

Rwys 34: 300-1 or standard with minimum climb of 347' per NM to 1100.

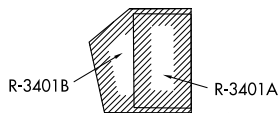
NOTE: RADAR required.

NOTE: Select appropriate localizer/DME frequency/channel prior to departure.

NOTE: Turbojets accelerate to 250K until reaching 10000, if unable advise ATC.

NOTE: Assigned to aircraft with a requested altitude of 11000 or above.

(NARRATIVE ON FOLLOWING PAGE)



NOTE: Chart not to scale.

MEARZ SIX DEPARTURE
 (MEARZ6.MEARZ) 01FEB18

INDIANAPOLIS, INDIANA
 INDIANAPOLIS RGNL (MQJ)