

# RNAV (GPS) RWY 16

INDIANAPOLIS RGNL (MQJ)

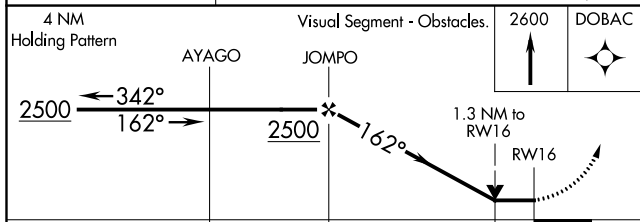
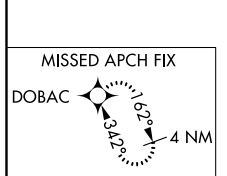
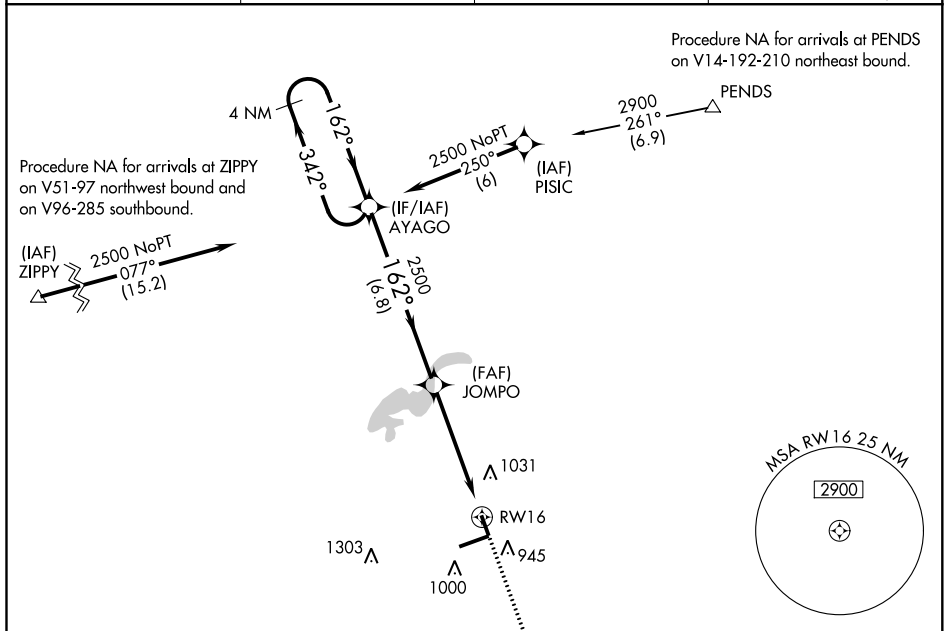
APP CRS	Rwy Idg	<b>3902</b>
<b>162°</b>	TDZE	<b>858</b>
	Apt Elev	<b>862</b>

RNP APCH.

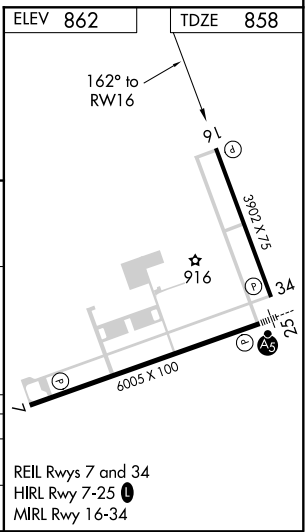
**⚠** VDP NA with Indianapolis Intl altimeter setting. When local altimeter setting not received, use Indianapolis Intl altimeter setting and increase all MDA 60 feet, increase LNAV Cat C/D visibility 1/8 mile increase Circling Cat D visibility 1/4 mile. Rwy 16 helicopter visibility reduction below 3/4 SM NA.

**⚠** MISSED APPROACH: Climb to 2600 direct DOBAC and hold.

AWOS-3 <b>124.175</b>	INDIANAPOLIS APP CON <b>127.15 317.8</b>	CLNC DEL <b>119.25</b>	UNICOM <b>122.975 (CTAF)</b> <b>📶</b>
--------------------------	---	---------------------------	--



CATEGORY	A	B	C	D
LNAV MDA	1320-1	462 (500-1)	1320-1 3/8	462 (500-1 3/8)
<b>📶</b> CIRCLING	1340-1	478 (500-1)	1360-1 1/2	1660-2 1/2
			498 (500-1 1/2)	798 (800-2 1/2)



EC-2, 30 DEC 2021 to 27 JAN 2022

EC-2, 30 DEC 2021 to 27 JAN 2022