


WAAS CH 56310 W25A	APP CRS 252°	Rwy Idg TDZE 860 Apt Elev 862	6005
----------------------------------------	------------------------	---------------------------------------------------	-------------

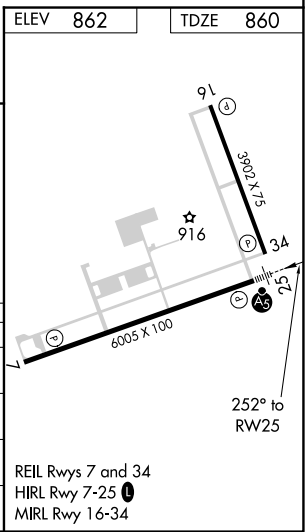
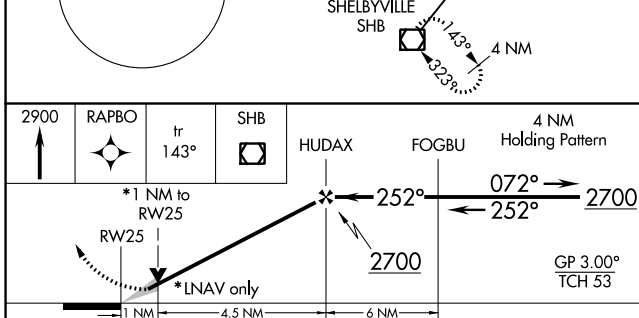
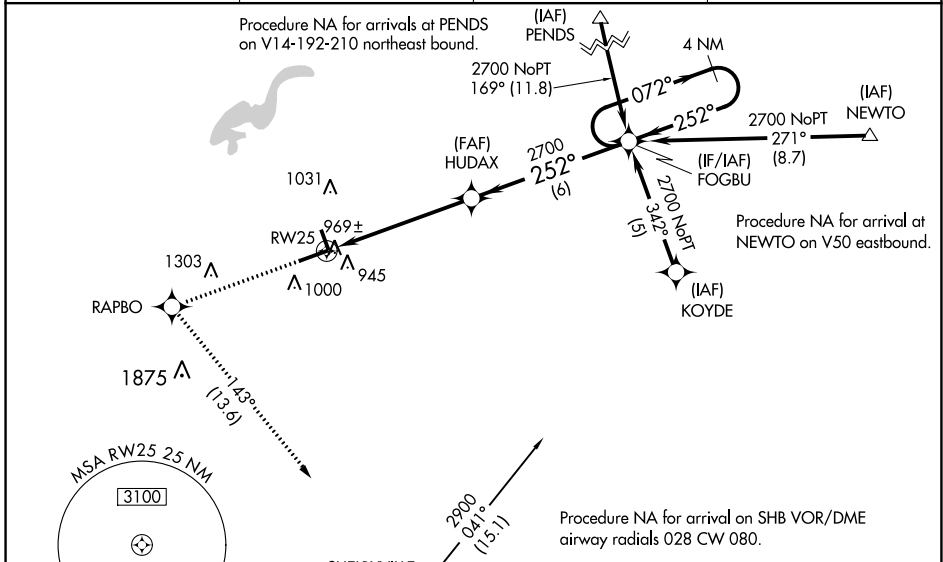
RNAV (GPS) RWY 25

INDIANAPOLIS RGNL (MQJ)

⚠ For uncompensated Baro-VNAV systems, LNAV/VNAV NA below -16°C (4°F) or above 54°C (130°F). Baro-VNAV and VDP NA when using Indianapolis Intl altimeter setting. DME/DME RNP-0.3 NA. When local altimeter setting not received, use Indianapolis Intl altimeter setting and increase all DA 55 feet and all MDA 60 feet, and increase all visibilities ½ SM. When using Indianapolis altimeter setting inoperative table does not apply. For inoperative ALS, increase LPV all Cats visibility to 1 SM.

MALS

MISSED APPROACH:
 Climb to 2900 direct RAPBO and on track 143° to SHB VOR/DME and hold.

AWOS-3 124.175	INDIANAPOLIS APP CON 127.15 317.8	CLNC DEL 119.25	UNICOM 122.975 (CTAF) 📻
--------------------------	---------------------------------------------	---------------------------	------------------------------------------



CATEGORY	A	B	C	D
LPV DA		1160-½	300 (300-½)	
LNAV/VNAV DA		1259-⅞	399 (400-⅞)	
LNAV MDA	1220-½	360 (400-½)	1220-⅝	360 (400-⅝)
C CIRCLING	1340-1	478 (500-1)	1360-1½ 498 (500-1½)	1660-2½ 798 (800-2½)

EC-2, 30 DEC 2021 to 27 JAN 2022

EC-2, 30 DEC 2021 to 27 JAN 2022