

VORTAC MMB <b>115.6</b> Chan <b>103</b>	APP CRS <b>197°</b>	Rwy Idg TDZE Apt Elev	<b>N/A</b> <b>N/A</b> <b>2566</b>
---	------------------------	-----------------------------	---

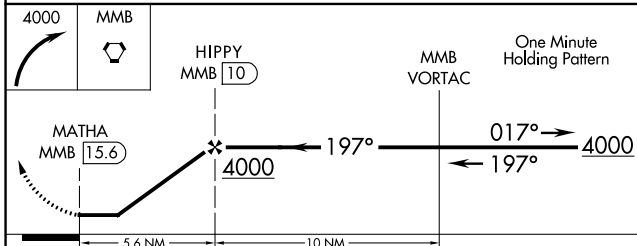
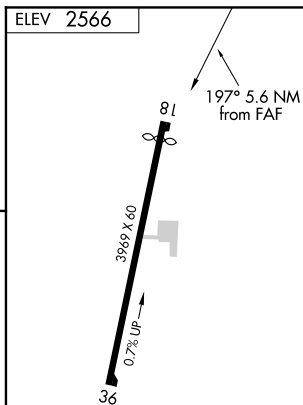
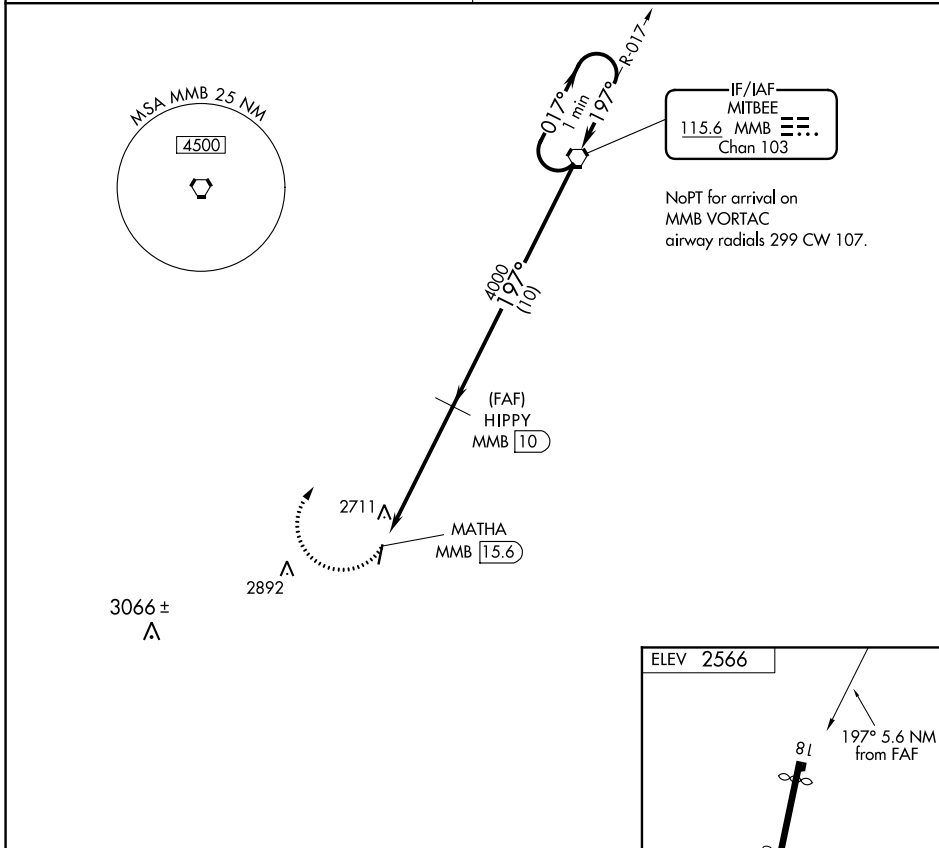
# VOR/DME-A

HIGGINS/LIPSCOMB COUNTY (1X1)

**Procedure NA at night. Use Canadian altimeter setting; when not received, use Gage, OK altimeter setting and increase all MDA 20 feet.**

**MISSED APPROACH:** Climbing right turn to 4000 direct MMB VORTAC and hold.

KANSAS CITY CENTER <b>126.95 379.2</b>	CTAF <b>122.9 0</b>
---	------------------------



CATEGORY	A	B	C	D
CIRCLING	3140-1	574 (600-1)	3140-1½ 574 (600-1½)	NA