

VOR/DME FZT <b>111.4</b> Chan 51	APP CRS <b>121°</b>	Rwy Idg TDZE Apt Elev	<b>5006</b> <b>678</b> <b>678</b>
--	------------------------	-----------------------------	---

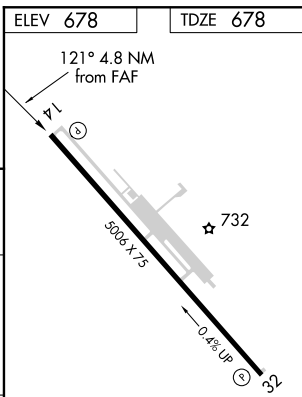
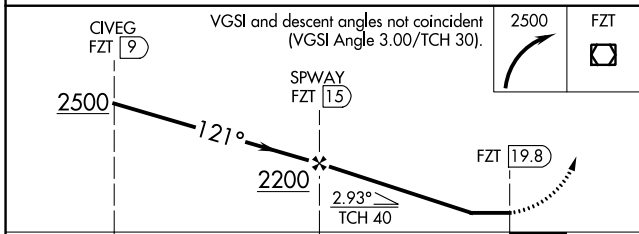
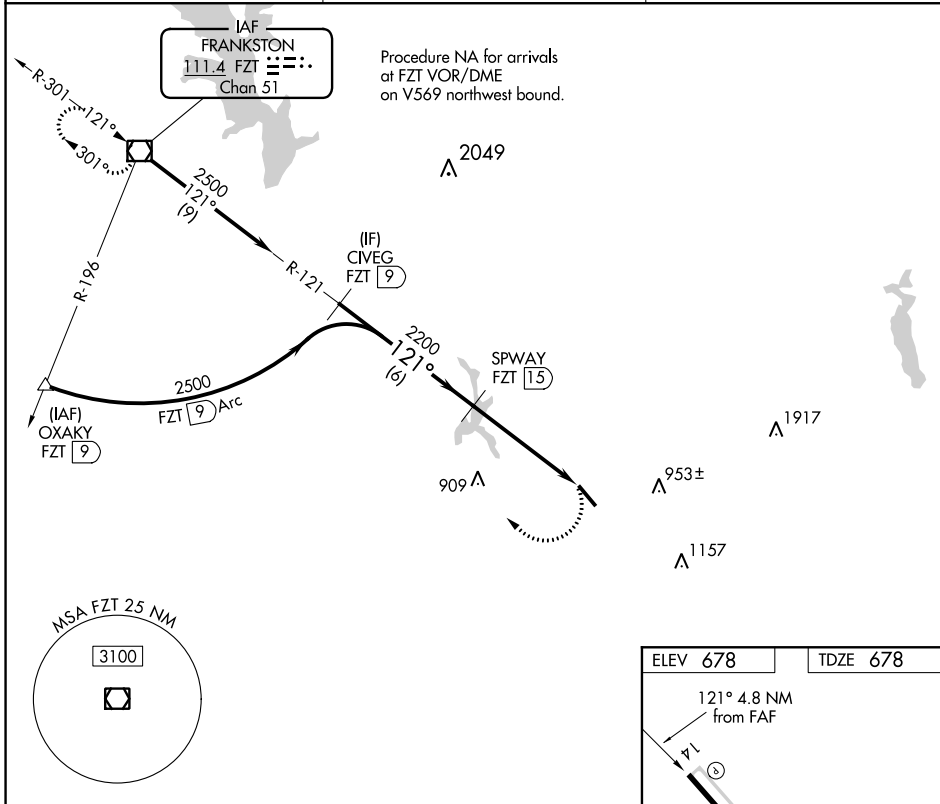
# VOR RWY 14

CHEROKEE COUNTY (JSO)

DME required.

MISSED APPROACH: Climbing right turn to 2500 direct FZT VOR/DME and hold.

AWOS-3 <b>119.075</b>	LONGVIEW APP CON * <b>128.75 379.15</b>	UNICOM <b>122.7 (CTAF) 0</b>
--------------------------	--	---------------------------------



CATEGORY	A	B	C	D
S-14	1080-1	402 (500-1)	1080-1¼ 402 (500-1¼)	NA
CIRCLING	1080-1 402 (500-1)	1140-1 462 (500-1)	1280-1¾ 602 (700-1¾)	NA

REIL Rwy 14  
MIRL Rwy 14-32 0

SC-5, 30 DEC 2021 to 27 JAN 2022

SC-5, 30 DEC 2021 to 27 JAN 2022