

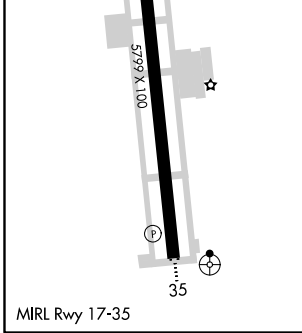
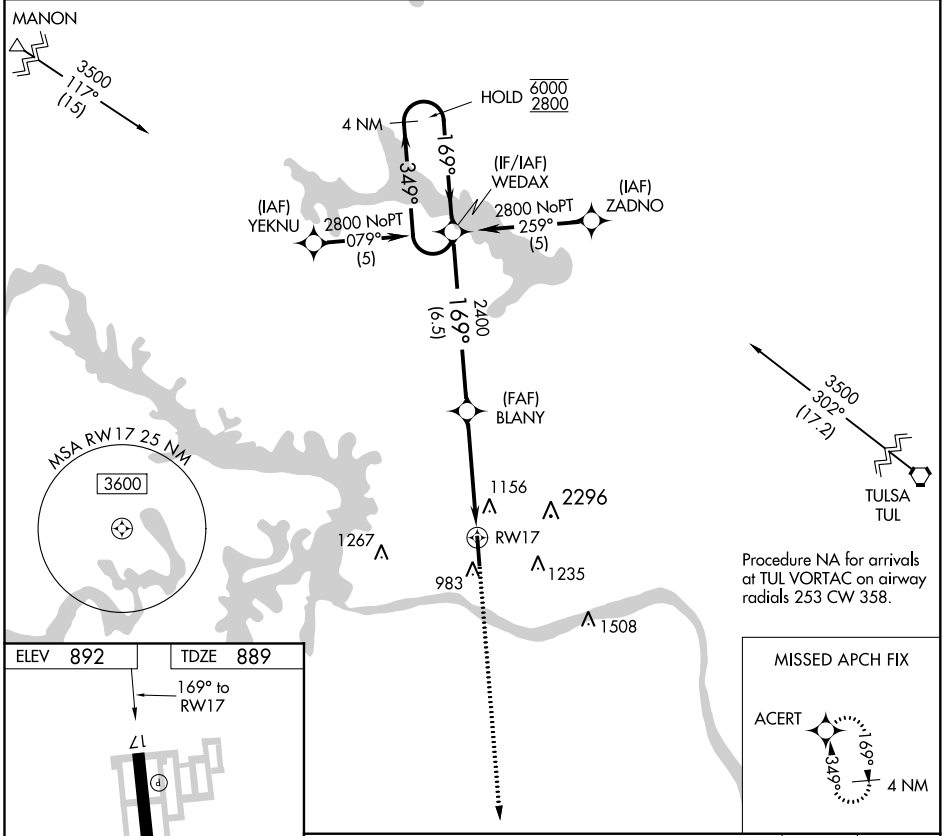
APP CRS	Rwy Idg	<b>5799</b>
<b>169°</b>	TDZE	<b>889</b>
	Apt Elev	<b>892</b>

# RNAV (GPS) RWY 17

WILLIAM R POGUE MUNI (OWP)

RNP APCH. **▽** Rwy 17 helicopter visibility reduction below 1 SM NA. Procedure NA at night. Circling NA for Cat C east of Rwy 17-35. MISSED APPROACH: Climb to 2800 direct ACERT and hold.

AWOS-3PT <b>118.325</b>	TULSA APP CON <b>124.0 338.3</b>	UNICOM <b>122.7 (CTAF)</b>
----------------------------	-------------------------------------	-------------------------------



4 NM Holding Pattern WEDAX	VGSi and descent angles not coincident (VGSi Angle 3.00/TCH 31).		2800 ACERT	
6000 ← 349°	2800 → 169°	769°	BLANY	
		2400	RWY 17	
	6.5 NM	4.6 NM		
3.04° TCH 45				
CATEGORY	A	B	C	D
LNAV MDA	1420-1	531 (600-1)	1420-1½ 531 (600-1½)	NA
<b>C</b> CIRCLING	1440-1	548 (600-1)	1440-1½ 548 (600-1½)	NA

SC-1, 30 DEC 2021 to 27 JAN 2022

SC-1, 30 DEC 2021 to 27 JAN 2022