

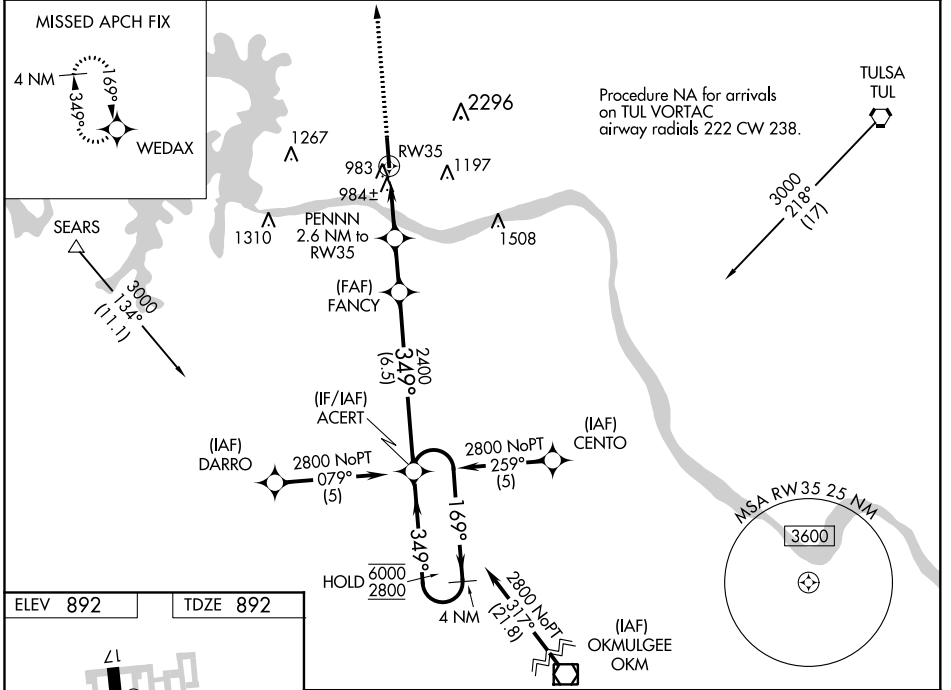
WAAS CH 57912 W35A	APP CRS 349°	Rwy Idg TDZE Apt Elev	5799 892 892
--	------------------------	-----------------------------	---

RNAV (GPS) RWY 35

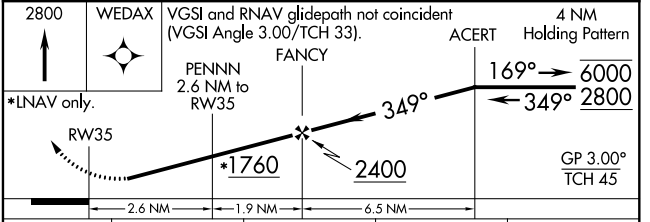
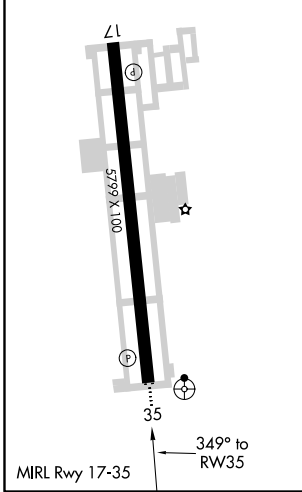
WILLIAM R POGUE MUNI (OWP)

RNP APCH.	ODALS	MISSED APPROACH: Climb to 2800 direct WEDAX and hold.
<p>▼ Rwy 35 helicopter visibility reduction below 1 SM NA. For uncompensated Baro-VNAV systems, LNAV/VNAV NA below -16°C or above 54°C. Procedure NA at night. Circling NA for Cat C east of Rwy 17-35. Inop table does not apply.</p>		

AWOS-3PT 118.325	TULSA APP CON 124.0 338.3	UNICOM 122.7 (CTAF)
----------------------------	-------------------------------------	-------------------------------



ELEV 892	TDZE 892
----------	----------



CATEGORY	A	B	C	D
LPV DA	1202-1		310 (400-1)	NA
LNAV/VNAV DA	1317-1½		425 (500-1½)	NA
LNAV MDA	1240-1		348 (400-1)	NA
C CIRCLING	1440-1		548 (600-1)	1440-1½ 548 (600-1½)

SC-1, 30 DEC 2021 to 27 JAN 2022

SC-1, 30 DEC 2021 to 27 JAN 2022