

WAAS CH 70634 W26A	APP CRS 265°	Rwy Idg TDZE Apt Elev	5531 1835 1888
--	------------------------	-----------------------------	---

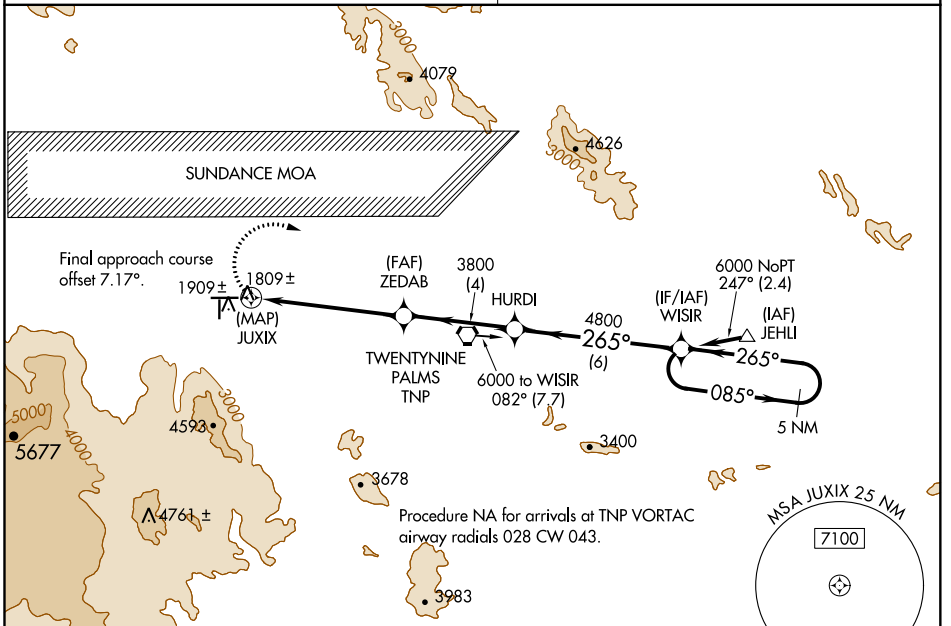
RNAV (GPS) RWY 26

TWENTYNINE PALMS (TNP)

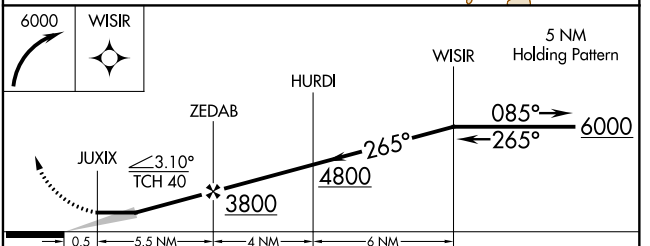
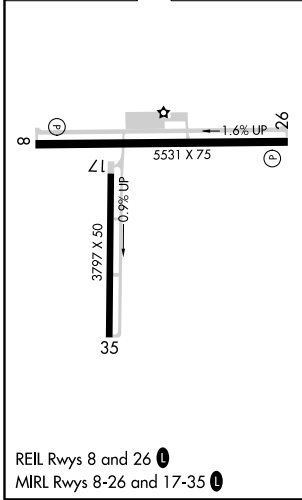
V Use Palm Springs Intl altimeter setting; when not received, procedure NA.
NA Circling NA south of Rwy 8-26. DME/DME RNP-0.3 NA.
 *Missed approach requires minimum climb of 425 feet per NM to 3900.

MISSED APPROACH: Climbing right turn to 6000 direct WISIR and hold.

LOS ANGELES CENTER 128.15 285.6	AUNICOM 122.8 (CTAF) 0
---	----------------------------------



ELEV 1888	TDZE 1835
-----------	-----------



CATEGORY	A	B	C	D
LP MDA	2940-1¼ 1105 (1100-1¼)	2940-1½ 1105 (1100-1½)		NA
*LNAV MDA	3080-1¼ 1245 (1200-1¼)	3080-1½ 1245 (1200-1½)		NA
LNAV MDA	3180-1¼ 1345 (1300-1¼)	3180-1½ 1345 (1300-1½)		NA
C CIRCLING	3300-1¼ 1412 (1500-1¼)	3340-1½ 1452 (1500-1½)		NA

SW-3, 30 DEC 2021 to 27 JAN 2022

SW-3, 30 DEC 2021 to 27 JAN 2022