

WAAS CH 86628 W01A	APP CRS 009°	Rwy Idg TDZE Apt Elev	5501 1014 1016
--	------------------------	-----------------------------	---

RNAV (GPS) RWY 1

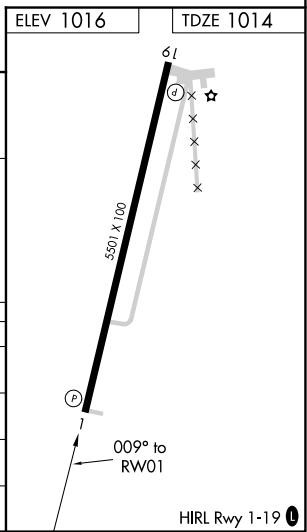
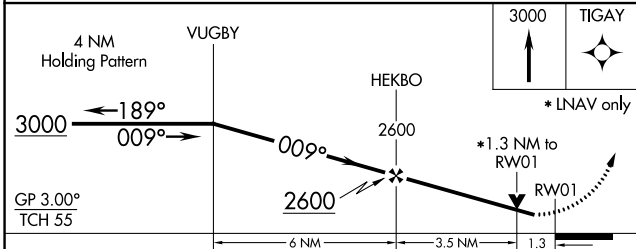
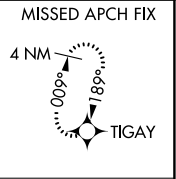
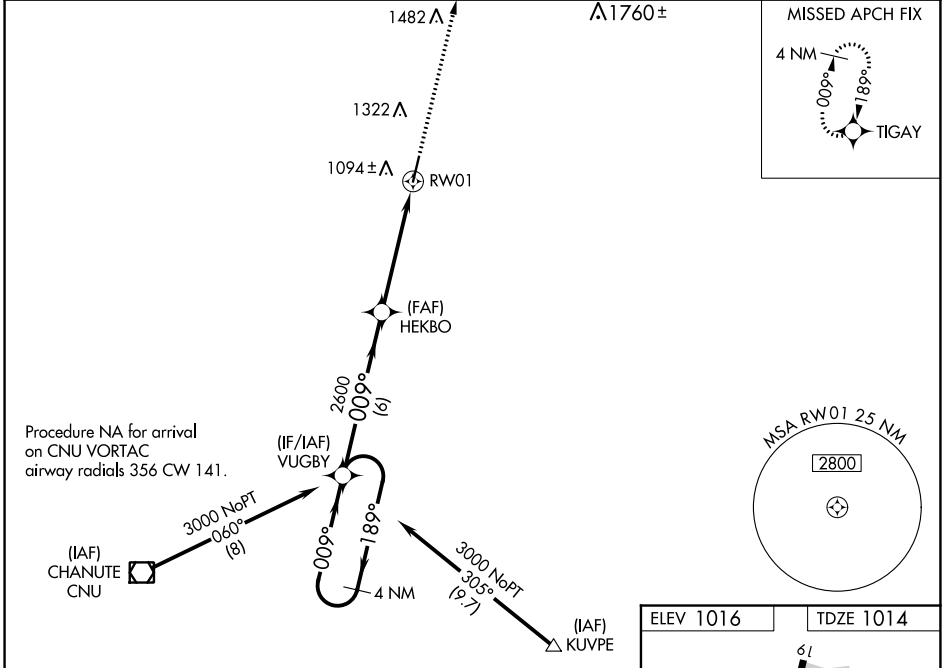
ALLEN COUNTY (K88)

RNP APCH.

▼ Rwy 1 helicopter visibility reduction below 3/4 SM NA. Baro-VNAV and VDP NA when using Chanute altimeter setting. For uncompensated Baro-VNAV systems, LNAV/VNAV NA below -17°C or above 54°C. When local altimeter setting not received, use Chanute altimeter setting; increase all DA to 1296 feet; increase all MDAs 40 feet and visibility Circling Cat C 1/4 SM.

MISSED APPROACH:
Climb to 3000 direct
TIGAY and hold.

AWOS-3 128.325	KANSAS CITY CENTER 127.725 270.25	UNICOM 122.8 (CTAF) 0
--------------------------	---	---------------------------------



CATEGORY	A	B	C	D
LPV DA	1264-1 250 (300-1)			NA
LNAV/VNAV DA	1264-1 250 (300-1)			NA
LNAV MDA	1480-1 466 (500-1)		1480-1 3/8 466 (500-1 3/8)	NA
CIRCLING	1520-1 504 (600-1)		1660-1 3/4 644 (700-1 3/4)	NA

NC-2, 30 DEC 2021 to 27 JAN 2022

NC-2, 30 DEC 2021 to 27 JAN 2022