

|                |             |          |             |
|----------------|-------------|----------|-------------|
| VORTAC TKO     | APP CRS     | Rwy Idg  | <b>4018</b> |
| <b>109.8</b>   | <b>153°</b> | TDZE     | <b>1418</b> |
| Chan <b>35</b> |             | Apt Elev | <b>1418</b> |

# VOR RWY 17

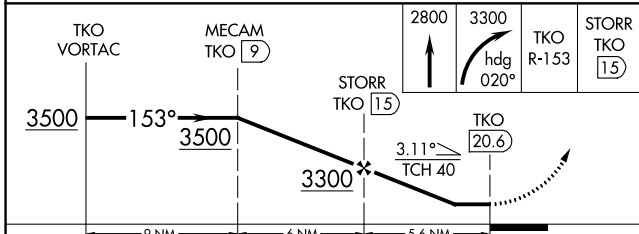
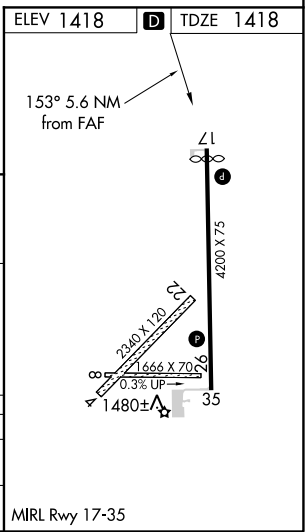
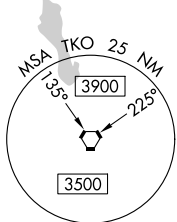
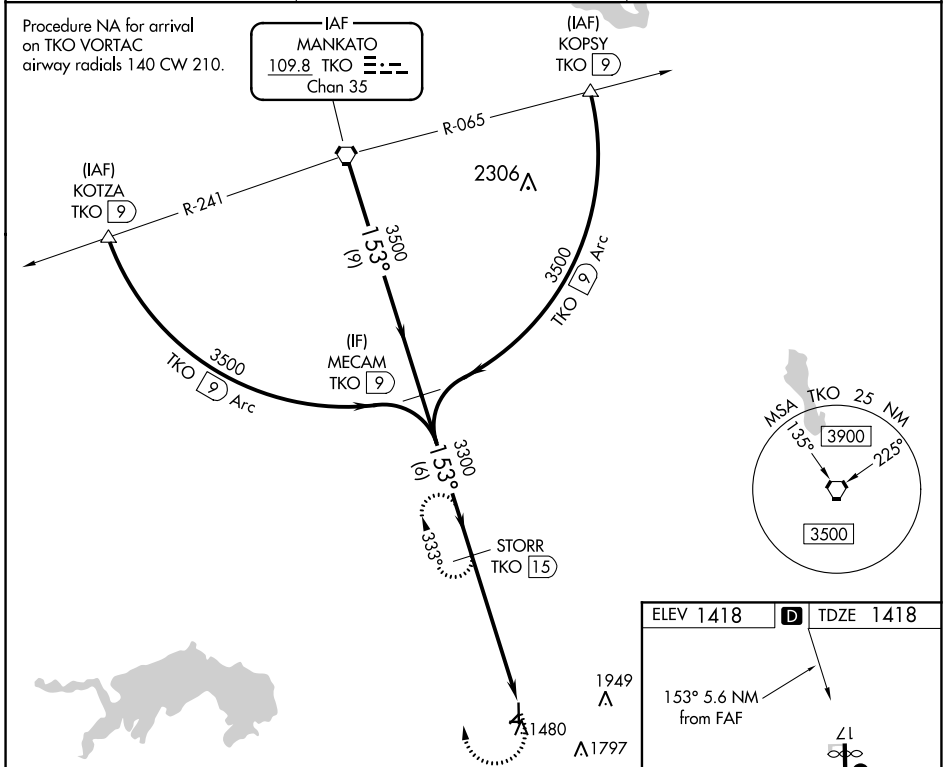
MORITZ MEML (K61)

DME required for procedure entry.

**NA** Rwy 17 helicopter visibility reduction below 1 SM NA. Circling Rws 4, 8, 22 and 26 NA. Straight-in Rwy 17 NA at night, Circling Rwy 17 NA at night. When local altimeter setting not received, use Concordia altimeter setting and increase all MDA 80 feet and all Cat C visibilities ¼ SM.

MISSED APPROACH: Climb to 2800 then climbing right turn to 3300 on heading 020° and TKO R-153 to STORR/15 DME and hold.

|                          |  |                                 |
|--------------------------|--|---------------------------------|
| AWOS-3<br><b>118.225</b> | KANSAS CITY CENTER<br><b>134.9 363.2</b> | UNICOM<br><b>122.8 (CTAF) 0</b> |
|--------------------------|--|---------------------------------|



| CATEGORY          | A                     | B                       | C                       | D  |
|-------------------|-----------------------|-------------------------|-------------------------|----|
| S-17              | 2040-1                | 622 (700-1)             | 2040-1¾<br>622 (700-1¾) | NA |
| <b>C</b> CIRCLING | 2040-1<br>622 (700-1) | 2260-1¼<br>842 (900-1¼) | 2260-2½<br>842 (900-2½) | NA |

MIRL Rwy 17-35

NC-2, 30 DEC 2021 to 27 JAN 2022

NC-2, 30 DEC 2021 to 27 JAN 2022