

APP CRS 355°	Rwy Idg 3498
	TDZE 1102
	Apt Elev 1102

RNAV (GPS) RWY 36

FREEMAN FLD (3JC)

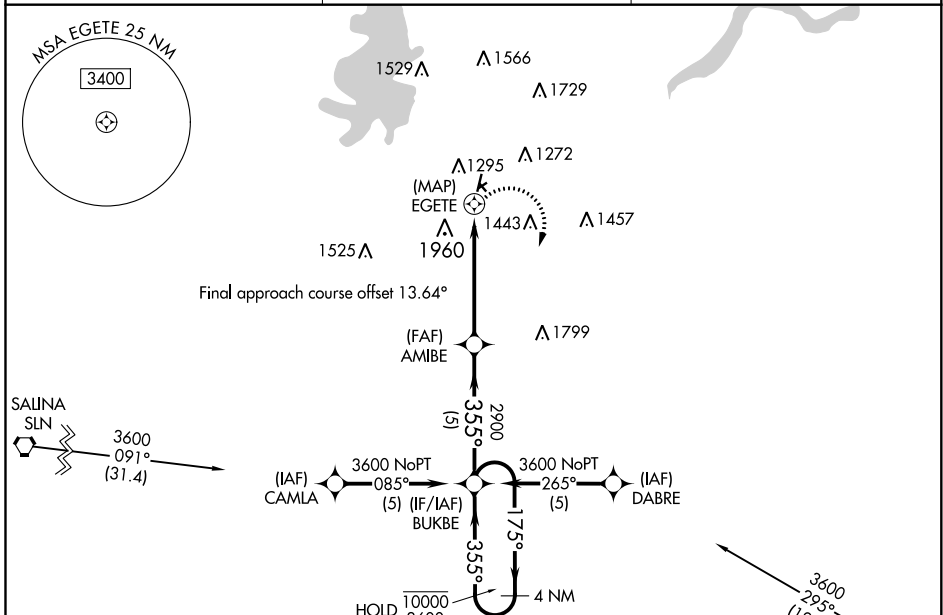
RNP APCH.
 ⚠ Circling Rwy 5, 23, 13, 31 NA. Circling NA west of Rwy 18-36.
 ⚠ NA Procedure NA at night. Rwy 36 helicopter visibility reduction below 1 SM NA. Use Marshall AAF, KS alimeter setting.

MISSED APPROACH: Climbing right turn to 3600 direct BUKBE and hold.

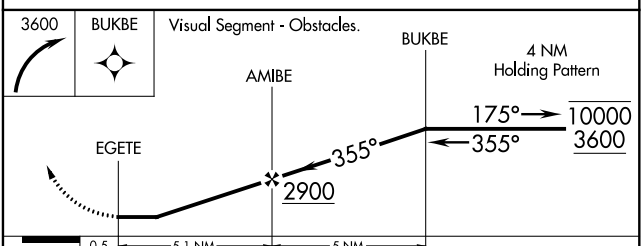
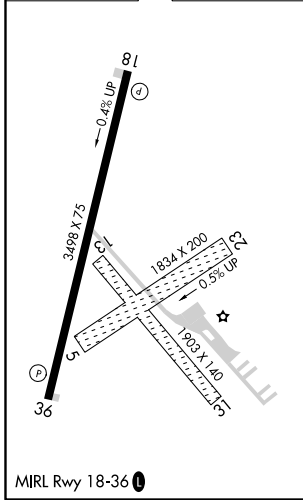
FRI ASOS
121.025

MARSHALL AAF GCA *
121.25 254.35

UNICOM
122.8 (CTAF) 0



ELEV 1102 TDZE 1102



CATEGORY	A	B	C	D
LNAV MDA	2120-1¼ 1018 (1100-1¼)	2120-1½ 1018 (1100-1½)	NA	
C CIRCLING	2120-1¼ 1018 (1100-1¼)	2120-1½ 1018 (1100-1½)	NA	

NC-2, 30 DEC 2021 to 27 JAN 2022

NC-2, 30 DEC 2021 to 27 JAN 2022