

APP CRS	Rwy Idg	5000
141°	TDZE	3730
	Apt Elev	3730

RNAV (GPS) RWY 14

HOLYOKE (HEQ)

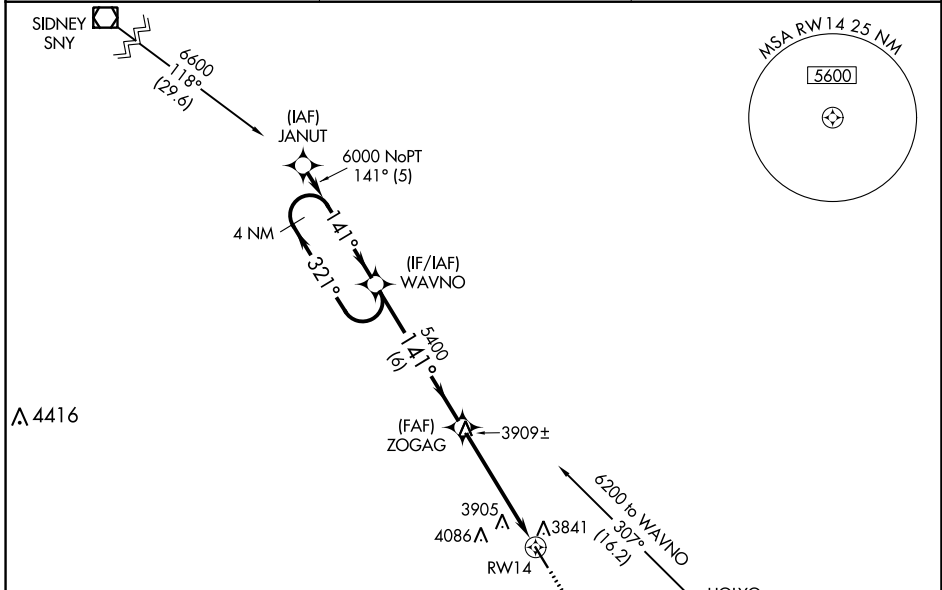
⚠ Night landing: Rwy 14 NA. DME/DME RNP-0.3 NA. Helicopter visibility reduction below 1 SM NA. When local altimeter setting not received, use Sidney Muni/Lloyd W Carr Fld altimeter setting and increase all MDAs 200 feet and increase LNAV Cat C/D visibility ½ mile, Circling Cat C visibility ½ mile and Circling Cat D visibility ¾ mile.

MISSED APPROACH: Climb to 6500 direct YOSUS and via 131° track to ASHBY and hold.

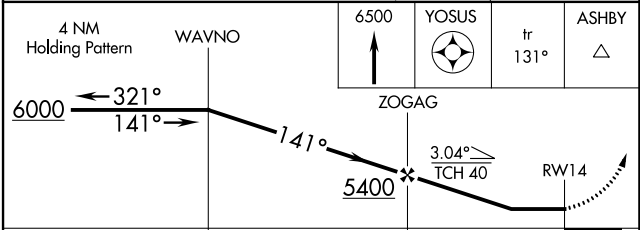
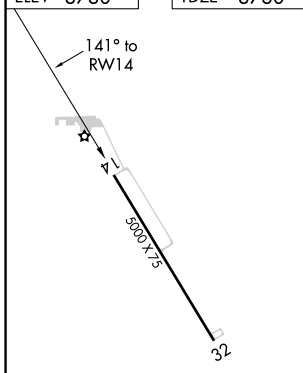
AWOS-3
119.275

DENVER CENTER
118.475 225.4

UNICOM
122.7 (CTAF) 0



ELEV 3730	TDZE 3730
-----------	-----------



CATEGORY	A	B	C	D
LNAV MDA	4160-1	430 (500-1)	4160-1 ¼	430 (500-1 ¼)
CIRCLING	4200-1 470 (500-1)	4240-1 510 (600-1)	4240-1 ½ 510 (600-1 ½)	4400-2 670 (700-2)

MIRL Rwy 14-32 0
REIL Rwys 14 and 32 0

HOLYOKE, COLORADO
Orig-F 15SEP16

40°34'N-102°16'W

RNAV (GPS) RWY 14

SW-1, 30 DEC 2021 to 27 JAN 2022

SW-1, 30 DEC 2021 to 27 JAN 2022