

NDB RCX 356	APP CRS 330°	Rwy Idg TDZE Apt Elev	4001 1233 1240
-----------------------	------------------------	-----------------------------	-------------------------------------------

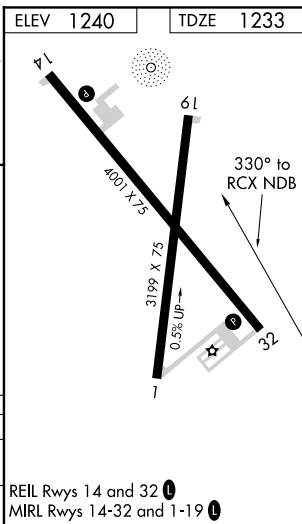
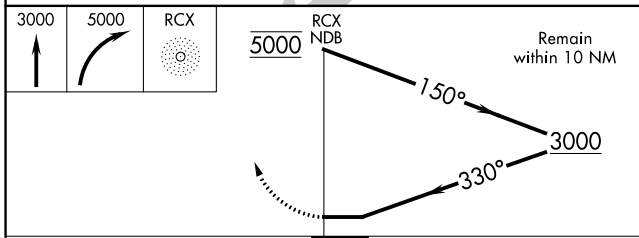
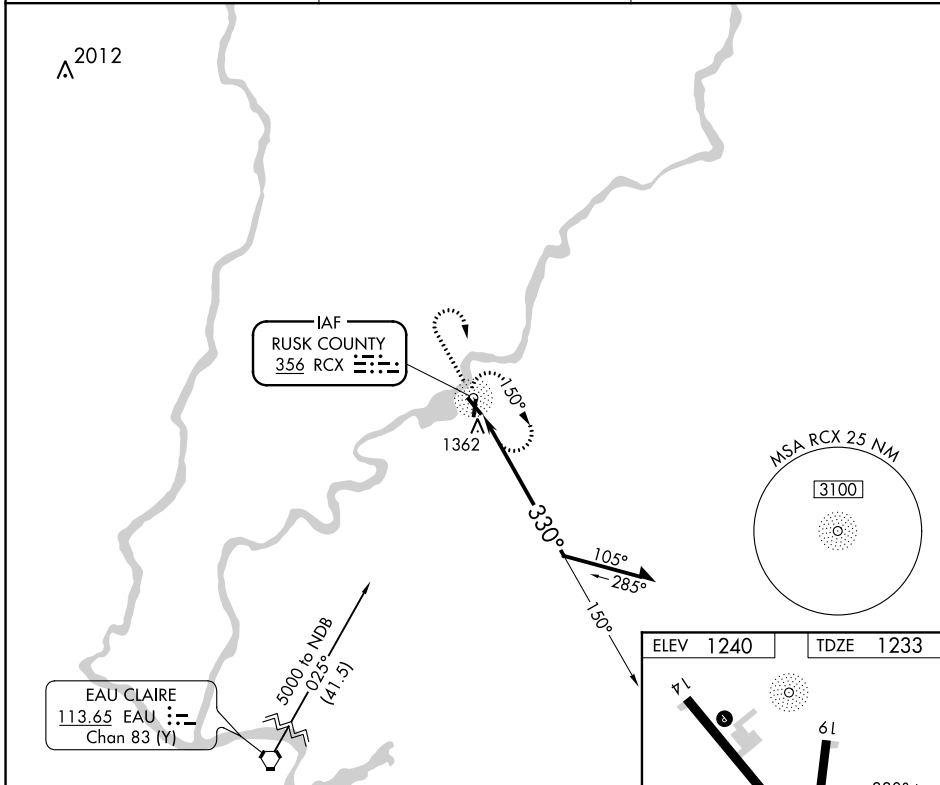
NDB RWY 32

RUSK COUNTY (RCX)

⚠ When local altimeter setting not received, use Rice Lake altimeter setting and increase all MDA 100 feet. Procedure NA at night. Rwy 32 helicopter visibility reduction below 1 SM NA.

MISSSED APPROACH: Climb to 3000 then climbing right turn to 5000 direct RCX NDB and hold, continue climb-in-hold to 5000.

AWOS-3 118.125	MINNEAPOLIS CENTER 133.65 281.5	UNICOM 122.8 (CTAF) 0
--------------------------	-------------------------------------------	---------------------------------



CATEGORY	A	B	C	D
S-32	1820-1	587 (600-1)		NA
CIRCLING	1820-1	580 (600-1)		NA

REIL Rwys 14 and 32 0
MIRL Rwys 14-32 and 1-19 0

EC-3, 30 DEC 2021 to 27 JAN 2022

EC-3, 30 DEC 2021 to 27 JAN 2022