

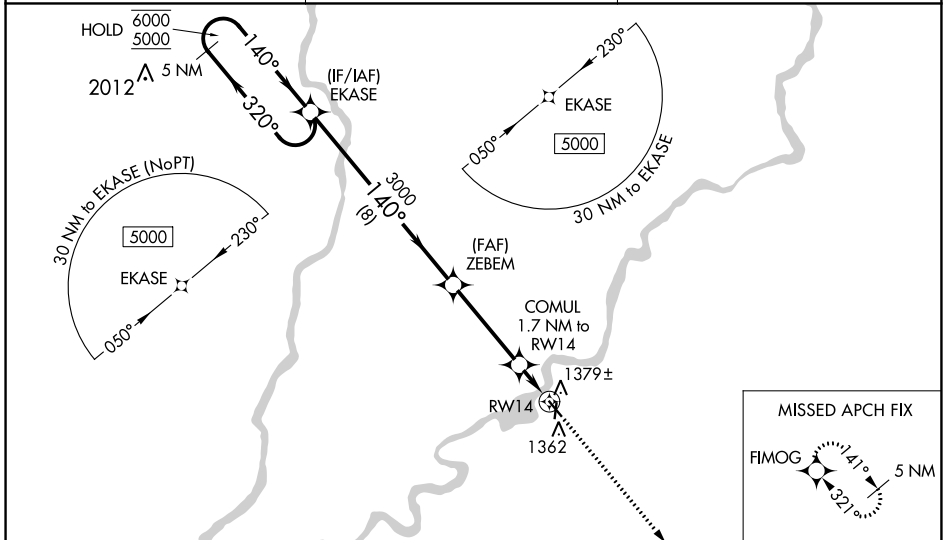
WAAS CH 77921 W14A	APP CRS 140°	Rwy Idg TDZE Apt Elev	4001 1237 1240
----------------------------------------	------------------------	-----------------------------	-------------------------------------------

RNAV (GPS) RWY 14

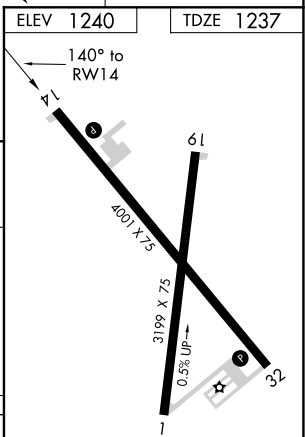
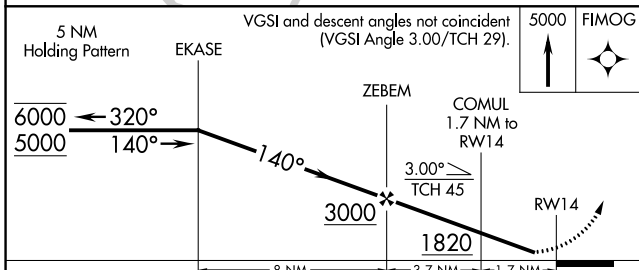
RUSK COUNTY (RCX)

RNP APCH.	<p>⚠ Rwy 14 helicopter visibility reduction below 1 SM NA. Straight-in Rwy 14 NA at night, Circling Rwy 1, 14, 19 NA at night. When local altimeter setting not received, use Rice Lake altimeter setting and increase all MDAs 100 feet.</p>	<p>MISSED APPROACH: Climb to 5000 direct FIMOG and hold, continue climb-in-hold to 5000.</p>

AWOS-3 118.125	MINNEAPOLIS CENTER 133.65 281.5	UNICOM 122.8 (CTAF) 0
--------------------------	-------------------------------------------	---------------------------------



ELEV 1240	TDZE 1237
-----------	-----------



CATEGORY	A	B	C	D
LNNAV MDA	1640-1	403 (400-1)		NA
CIRCLING	1680-1 440 (500-1)	1700-1 460 (500-1)		NA

REIL Rwy 14 and 32 0
MIRL Rwy 14-32 and 1-19 0

EC-3, 30 DEC 2021 to 27 JAN 2022

EC-3, 30 DEC 2021 to 27 JAN 2022