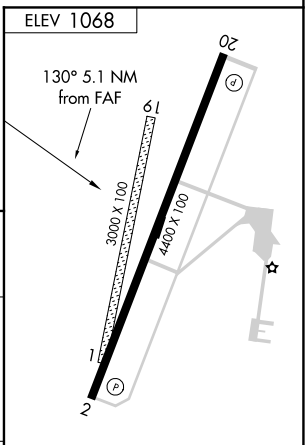
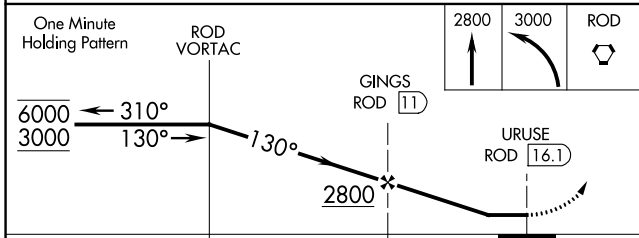
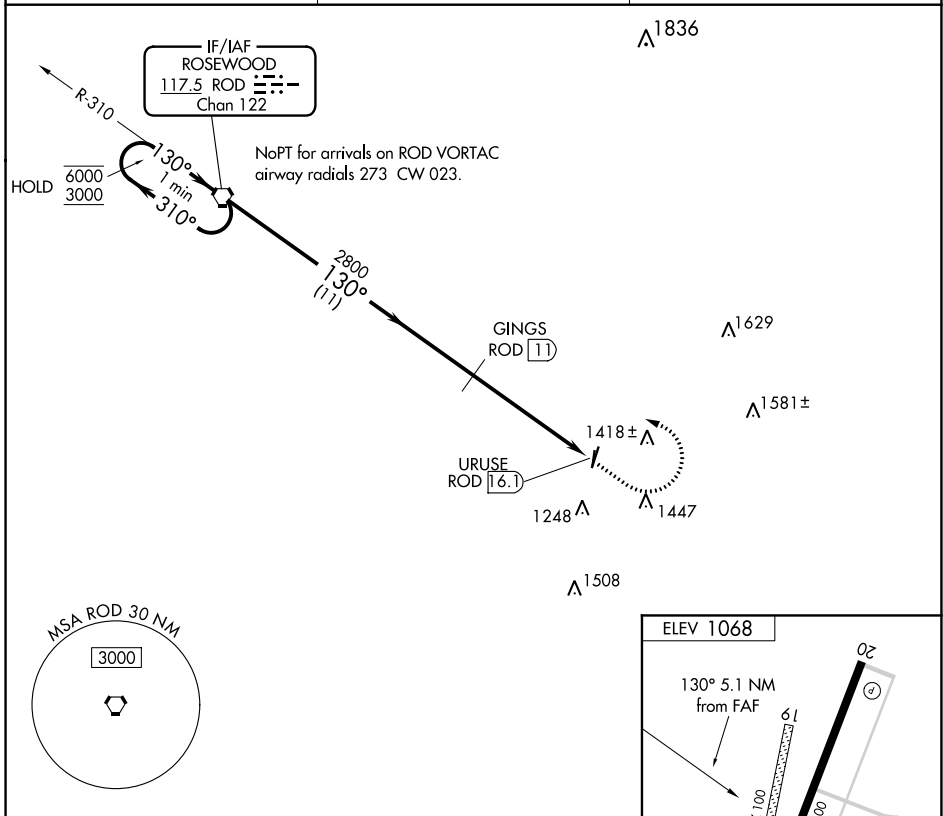


VORTAC ROD <b>117.5</b> Chan <b>122</b>	APP CRS <b>130°</b>	Rwy Idg TDZE Apt Elev <b>N/A</b> <b>N/A</b> <b>1068</b>
---	------------------------	--

**VOR-A**  
GRIMES FIELD (I74)

DME required.		MISSED APPROACH: Climb to 2800 then climbing left turn to 3000 direct ROD VORTAC and hold.
<p>⚠ Circling NA to Rwy 1 and 19. When local altimeter setting not received, use Springfield altimeter setting and increase all MDAs 60 feet and Cat C visibility ¼ SM.</p>		
AWOS-3 <b>118,325</b>	COLUMBUS APP CON <b>118.425 294.5</b>	UNICOM <b>122.7</b> (CTAF) <b>📻</b>



CATEGORY	A	B	C	D
📻 CIRCLING	1580-1 512 (600-1)	1780-1 712 (800-1)	1800-2 732 (800-2)	NA

MIRL Rwy 2-20 **📻**  
REIL Rwys 2 and 20 **📻**

EC-2, 30 DEC 2021 to 27 JAN 2022

EC-2, 30 DEC 2021 to 27 JAN 2022