

APP CRS	Rwy Idg	4400
069°	TDZE	59
	Apt Elev	59

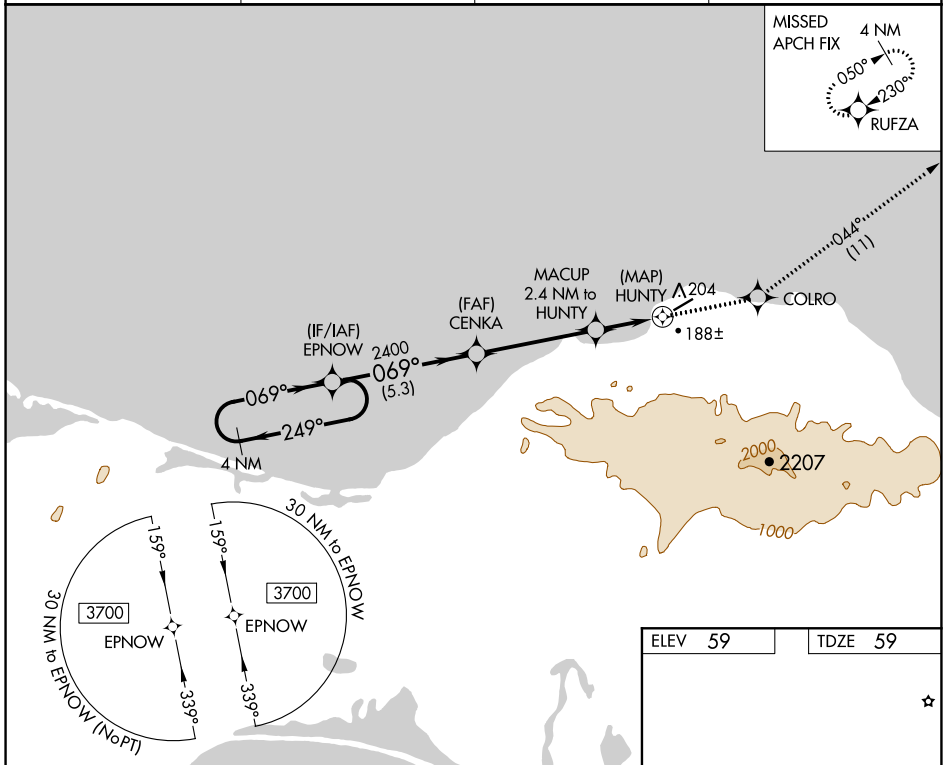
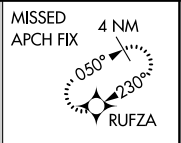
RNAV (GPS) RWY 5

SAVOONGA (SVA) (PASA)

⚠ Circling NA southeast of Rwy 5-23. DME/DME RNP-0.3 NA. When local altimeter setting not received, use Gambell altimeter setting and increase all MDAs 100 feet; increase LNAV Cat C/D visibility $\frac{3}{8}$ SM and Circling Cat C visibility $\frac{1}{2}$ SM. VDP NA with Gambell altimeter setting.

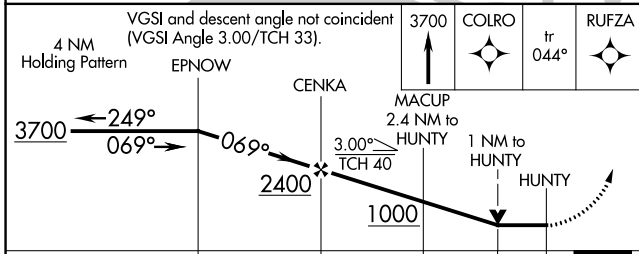
MISSED APPROACH: Climb to 3700 direct COLRO and on track 044° to RUFZA and hold, continue climb-in-hold to 3700.

AWOS-3P 121.3	ANCHORAGE CENTER 132.2 281.4	NOME RADIO 122.3	CTAF 122.7
-------------------------	--	----------------------------	----------------------

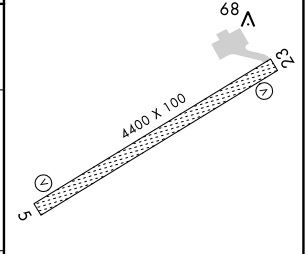


AK, 02 DEC 2021 to 27 JAN 2022

AK, 02 DEC 2021 to 27 JAN 2022



ELEV 59	TDZE 59
---------	---------



CATEGORY	A	B	C	D
LNAV MDA	560-1 501 (600-1)		560-1 $\frac{3}{8}$ 501 (600-1 $\frac{3}{8}$)	
CIRCLING	560-1 501 (600-1)		780-2 721 (800-2)	1160-3 1101 (1200-3)

MIRL Rwy 5-23