

VOR/DME ULL 117.3 Chan 120	APP CRS 229°	Rwy Idg 4400 TDZE 58 Apt Elev 59
--	------------------------	---

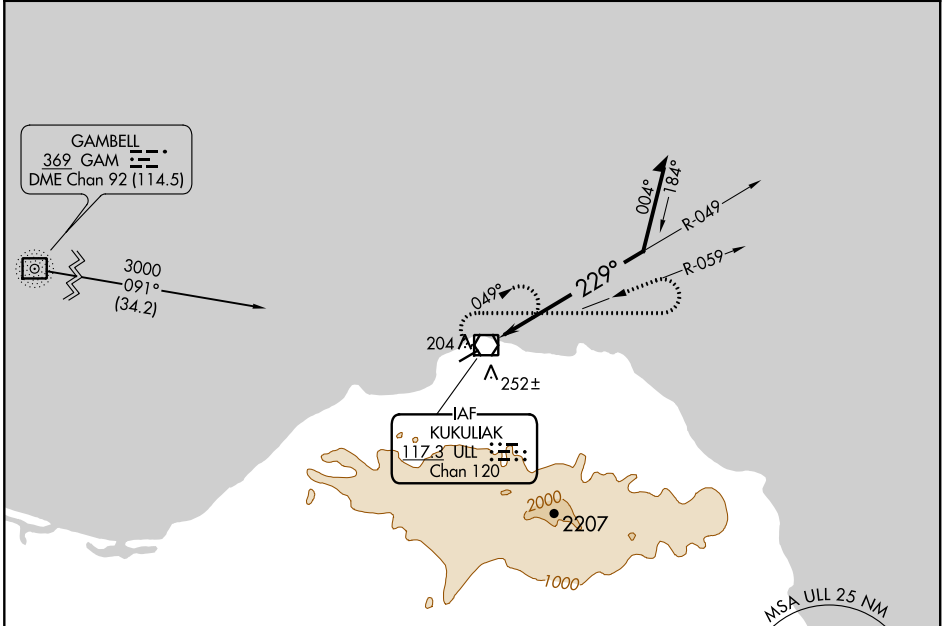
VOR RWY 23

SAVOONGA (SVA) (PASA)

⚠ Circling NA southeast of Rwy 5-23. When local altimeter setting not received, use Gambell altimeter setting and increase all MDAs 100 feet; increase S-23 Cat C/D visibility ¼ SM and Circling Cat C visibility ½ SM. VDP NA with Gambell altimeter setting.

MISSED APPROACH: Climbing right turn to 3300 via heading 090° and ULL VOR/DME R-059 then left turn via ULL VOR/DME R-059 to ULL VOR/DME and hold.

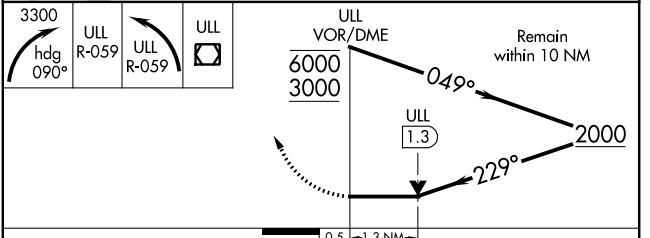
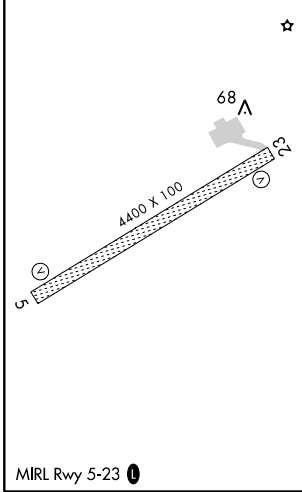
AWOS-3P 121.3	ANCHORAGE CENTER 132.2 281.4	NOME RADIO 122.3	CTAF 122.7 Ⓛ
-------------------------	--	----------------------------	-------------------------------



AK, 02 DEC 2021 to 27 JAN 2022

AK, 02 DEC 2021 to 27 JAN 2022

ELEV 59	TDZE 58
----------------	----------------



CATEGORY	A	B	C	D
S-23	660-1	602 (700-1)	660-1¾ 602 (700-1¾)	660-2 602 (700-2)
CIRCLING	660-1	601 (700-1)	780-2 721 (800-2)	1160-3 1101 (1200-3)