

VORTAC BGD <b>108.6</b> Chan <b>23</b>	APP CRS <b>009°</b>	Rwy Idg TDZE Apt Elev	<b>5022</b> <b>3090</b> <b>3090</b>
--	------------------------	-----------------------------	---

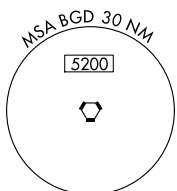
# VOR/DME RWY 2

MAJOR SAMUEL B CORNELIUS FIELD (E42)

**NA** Visibility reduction by helicopters NA. Use Berger altimeter setting; when not received, use Rick Husband Amarillo Intl altimeter setting and increase all MDA 140 feet, increase S-2 Cat C visibility ½ mile, Circling Cat A visibility ¼ mile, and Circling Cat C visibility ½ mile.

**MISSED APPROACH:** Climbing right turn to 5100 direct BGD VORTAC and hold.

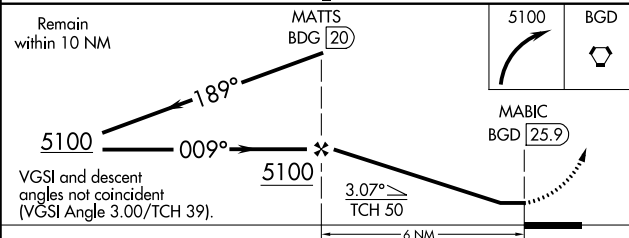
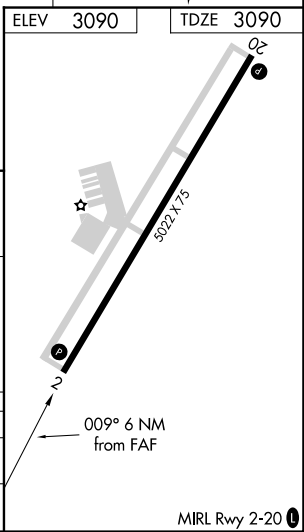
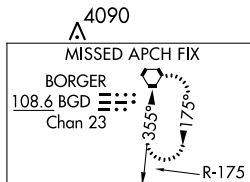
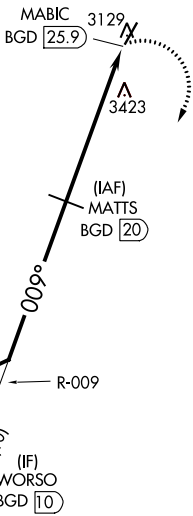
AWOS-3P <b>118.925</b>	ALBUQUERQUE CENTER <b>127.85 285.475</b>	CTAF <b>122.9</b>
---------------------------	---	----------------------



LIBERAL  
112.3 LBL  
Chan 70



Procedure NA for arrivals at BGD VORTAC via V390 southwest bound.



CATEGORY	A	B	C	D
S-2	3760-1 670 (700-1)	3760-1¼ 670 (700-1¼)	3760-1¾ 670 (700-1¾)	NA
CIRCLING	3840-1 750 (800-1)	3840-1¼ 750 (800-1¼)	3840-2¼ 750 (800-2¼)	NA

# VOR/DME RWY 2

SC-2, 30 DEC 2021 to 27 JAN 2022

SC-2, 30 DEC 2021 to 27 JAN 2022

MIRL Rwy 2-20