

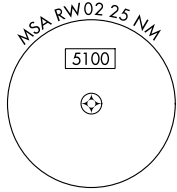
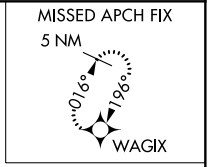
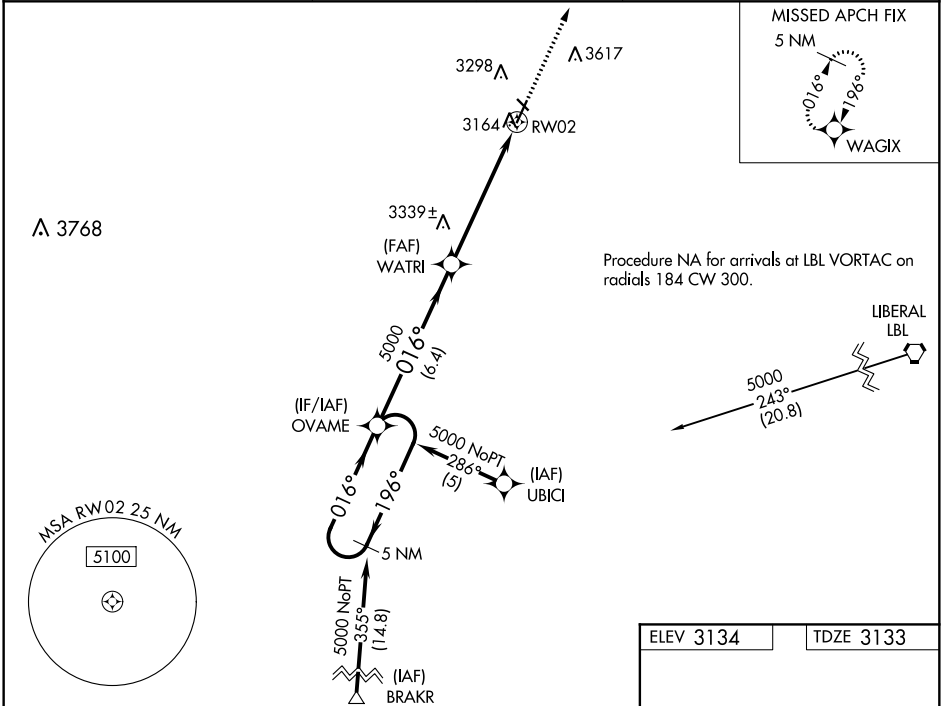
WAAS CH <b>63003</b> <b>W02A</b>	APP CRS <b>016°</b>	Rwy Idg TDZE Apt Elev	<b>5000</b> <b>3133</b> <b>3134</b>
--	------------------------	-----------------------------	---

# RNAV (GPS) RWY 2

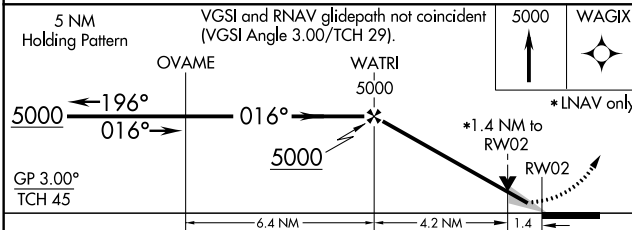
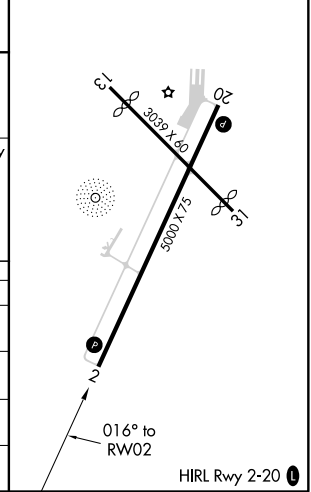
HUGOTON MUNI (HQQ)

RNP APCH.		MISSED APPROACH: Climb to 5000 direct WAGIX and hold.
<p>▼ For uncompensated Baro-VNAV systems, procedure NA below -21°C or above 54°C. Circling Rwy 13, 31 NA at night.</p>		

AWOS-3PT <b>118.6</b>	KANSAS CITY CENTER <b>134.0 257.865</b>	UNICOM <b>122.8 (CTAF)</b>
--------------------------	--	-------------------------------



ELEV 3134	TDZE 3133
-----------	-----------



CATEGORY	A	B	C	D
LPV DA	3383-1 250 (300-1)			NA
LNAV/VNAV DA	3424-1 291 (300-1)			NA
LNAV MDA	3600-1	467 (500-1)	3600-1 <sup>3</sup> / <sub>8</sub> 467 (500-1 <sup>3</sup> / <sub>8</sub> )	NA
CIRCLING	3660-1	526 (600-1)	3980-2 <sup>1</sup> / <sub>2</sub> 846 (900-2 <sup>1</sup> / <sub>2</sub> )	NA

NC-2, 30 DEC 2021 to 27 JAN 2022

NC-2, 30 DEC 2021 to 27 JAN 2022