

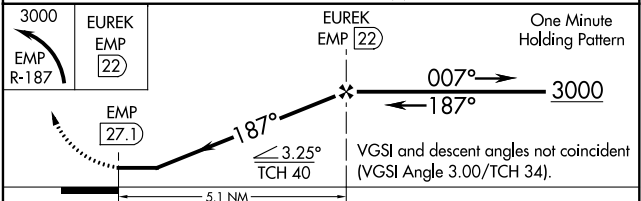
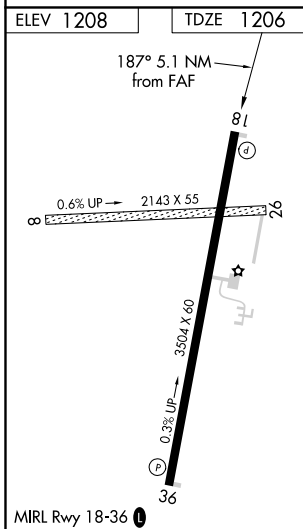
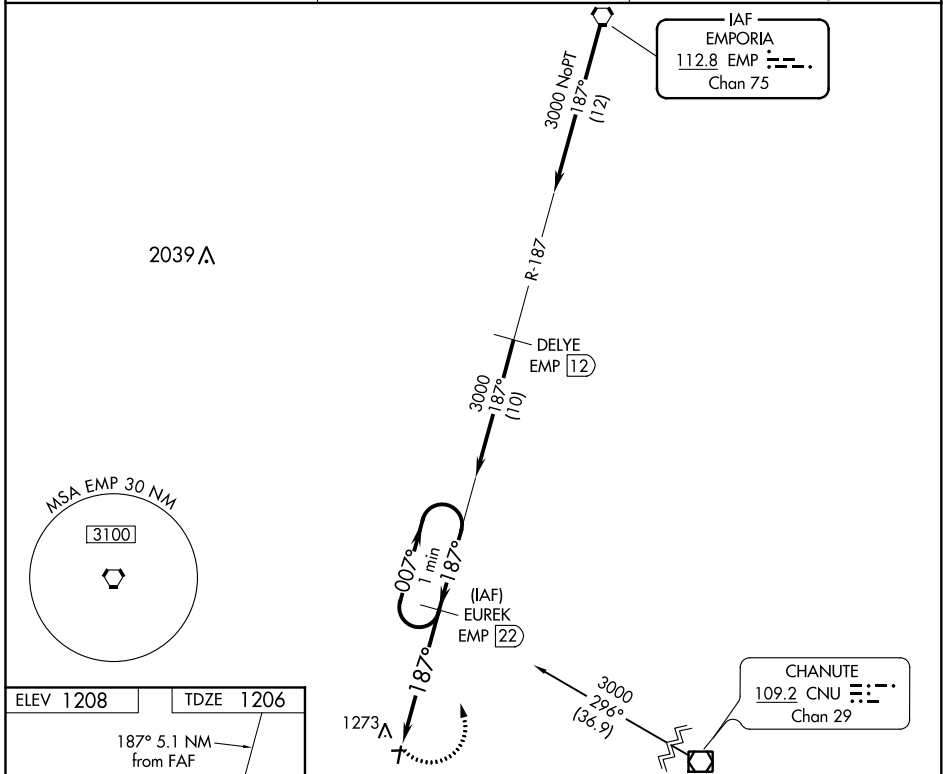
VORTAC EMP 112.8 Chan 75	APP CRS 187°	Rwy ldg TDZE 1206 Apt Elev 1208
--	------------------------	---

VOR/DME RWY 18

LT WILLIAM M MILLIKEN (13K)

NA Obtain local altimeter on CTAF; when not received, use Wichita altimeter setting. Circling NA to Rwy 8 and 26. MISSED APPROACH: Climbing left turn to 3000 via EMP R-187 to EUREK/22 DME and hold.

AWOS-3PT 120.975	KANSAS CITY CENTER 120.2 323.2	UNICOM 122.8 (CTAF)
----------------------------	--	-------------------------------



CATEGORY	A	B	C	D
S-18	1820-1 614 (700-1)	1820-1¼ 614 (700-1¼)	1820-1¾ 614 (700-1¾)	NA
CIRCLING	1820-1 612 (700-1)	1820-1¼ 612 (700-1¼)	2060-2½ 852 (900-2½)	NA
WICHITA DWIGHT D EISENHOWER NTL ALTIMETER SETTING MINIMUMS				
S-18	1980-1 774 (800-1)	1980-1¼ 774 (800-1¼)	1980-2½ 774 (800-2½)	NA
CIRCLING	1980-1 772 (800-1)	1980-1¼ 772 (800-1¼)	2220-3 1012 (1100-3)	NA

NC-2, 30 DEC 2021 to 27 JAN 2022

NC-2, 30 DEC 2021 to 27 JAN 2022