

| | | | |
|--|------------------------|-----------------------------|---|
| WAAS CH 87108 W18A | APP CRS 181° | Rwy Idg TDZE Apt Elev | 5001 685 685 |
|--|------------------------|-----------------------------|---|

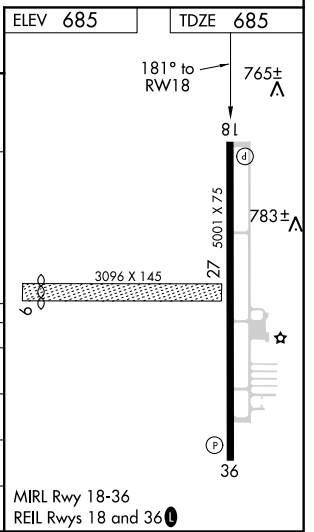
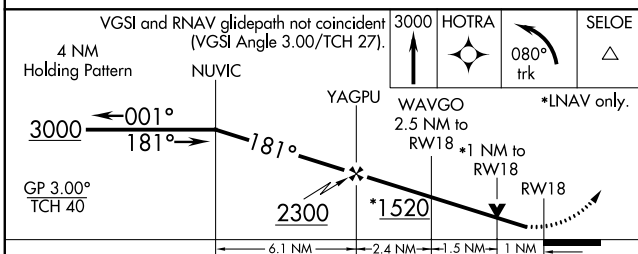
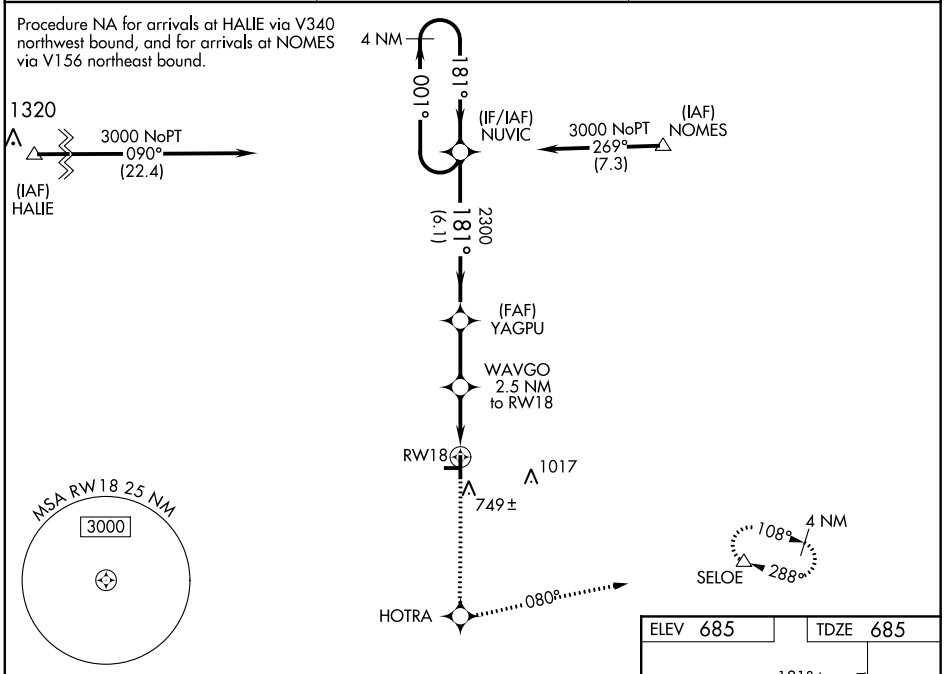
RNAV (GPS) RWY 18

STARKE COUNTY(OXI)

⚠ DME/DME RNP-0.3 NA. Visibility reduction by helicopters NA. For uncompensated Baro-VNAV systems, LNAV/VNAV NA below -16°C (4°F) or above 47°C (116°F). Baro-VNAV and VDP NA when using South Bend altimeter setting. Obtain local altimeter setting on CTAF, when not received use South Bend altimeter setting and increase all MDA/DA 80 feet, increase LPV and LNAV/VNAV visibilities ¼ mile all Cats, increase LNAV Cat C, D visibilities ¼ mile.

MISSED APPROACH: Climb to 3000 direct HOTRA and left turn via 080° track to SELOE and hold.

| | | |
|--------------------------|--|---------------------------------|
| AWOS-3 135.775 | SOUTH BEND APP CON* 132.05 257.8 | UNICOM 122.8 (CTAF) 0 |
|--------------------------|--|---------------------------------|



| CATEGORY | A | B | C | D |
|---------------|-----------------------|-----------------------|-------------------------|-------------------------|
| LPV DA | | 935-1 | 250 (300-1) | |
| LNAV/ VNAV DA | | 1035-1¼ | 350 (400-1¼) | |
| LNAV MDA | 1040-1 | 355 (400-1) | | 1040-1¼ 355 (400-1¼) |
| CIRCLING | 1100-1 415 (500-1) | 1140-1 455 (500-1) | 1140-1½ 455 (500-1½) | 1240-2 555 (500-2) |

MIRL Rwy 18-36
REIL Rwy 18 and 36 0

EC-2, 30 DEC 2021 to 27 JAN 2022

EC-2, 30 DEC 2021 to 27 JAN 2022