

WAAS CH <b>49138</b> <b>W09A</b>	APP CRS <b>089°</b>	Rwy Idg <b>4043</b> TDZE <b>1243</b> Apt Elev <b>1243</b>
--	------------------------	---

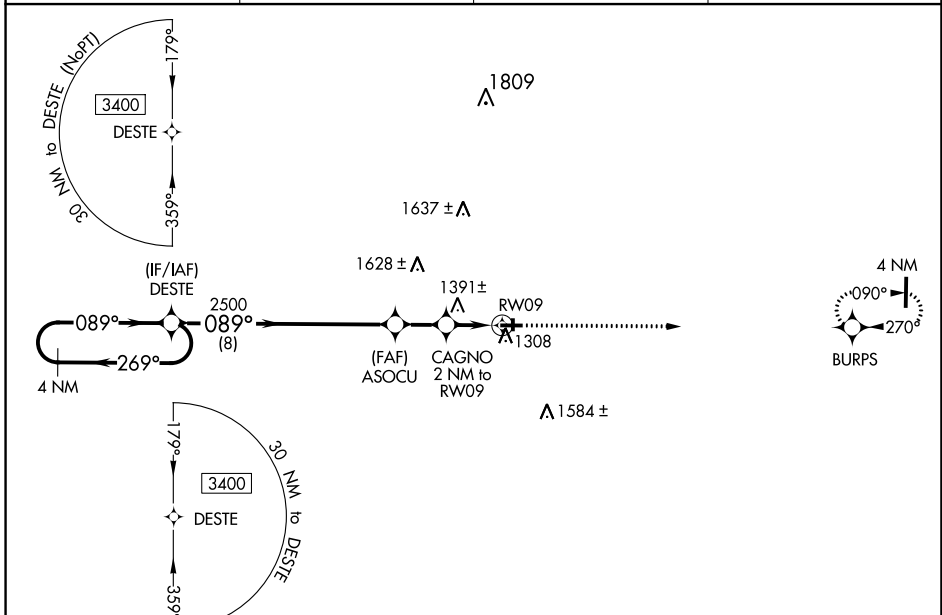
# RNAV (GPS) RWY 9

CUMBERLAND MUNI (UBE)

**⚠** Baro-VNAV NA when using Rice Lake altimeter setting. For uncompensated Baro-VNAV systems, LNAV/VNAV NA below -17°C (2°F) or above 54°C (130°F). DME/DME RNP-0.3 NA. Helicopter visibility reduction below ¼ SM NA. VDP NA when using Rice Lake altimeter setting. When local altimeter setting not received, use Rice Lake altimeter setting; increase LPV DA to 1536 feet and LNAV/VNAV DA to 1562 feet and all MDA 60 feet; increase LNAV/VNAV all Cats visibility ½ mile and increase LNAV Cat C/D visibility and Circling Cat C/D visibility ¼ mile.

**MISSED APPROACH:**  
Climb to 3400 direct BURPS and hold.

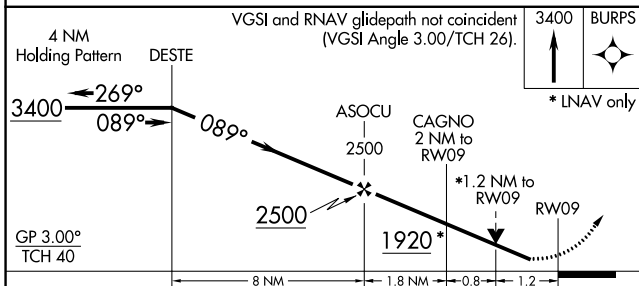
AWOS-3PT <b>119.175</b>	MINNEAPOLIS CENTER <b>125.3 335.6</b>	GCO <b>121.725</b>	UNICOM <b>122.8 (CTAF) 0</b>
----------------------------	--	-----------------------	---------------------------------



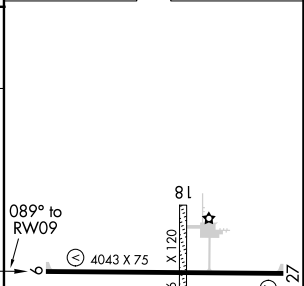
EC-3, 30 DEC 2021 to 27 JAN 2022

EC-3, 30 DEC 2021 to 27 JAN 2022

ELEV	1243	TDZE	1243
------	------	------	------



CATEGORY	A	B	1.9 NM C	D
LPV DA		1493-1	250 (300-1)	
LNAV/VNAV DA		1519-1	276 (300-1)	
LNAV MDA	1660-1	417 (500-1)	1660-1½	417 (500-1½)
<b>C</b> CIRCLING	1660-1 417 (500-1)	1940-1 697 (700-1)	1940-2 697 (700-2)	1980-2¼ 737 (800-2¼)



REIL Rwy 27 <b>0</b>	MIRL Rwy 9-27 <b>0</b>
----------------------	------------------------