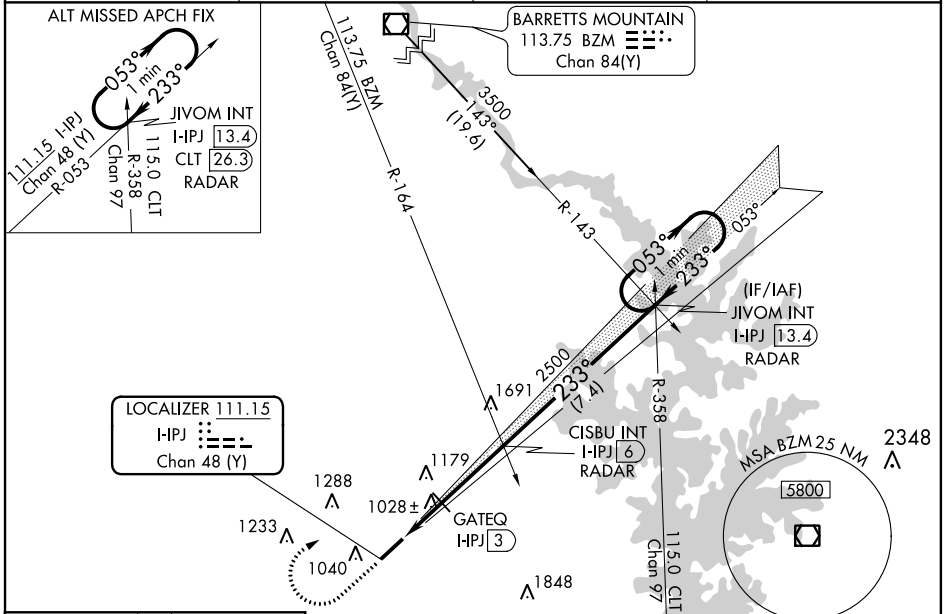


LOC/DME I-IPJ <b>111.15</b> Chan 48 (Y)	APP CRS <b>233°</b>	Rwy Idg TDZE Apt Elev	<b>5501</b> <b>872</b> <b>878</b>
---	------------------------	-----------------------------	---

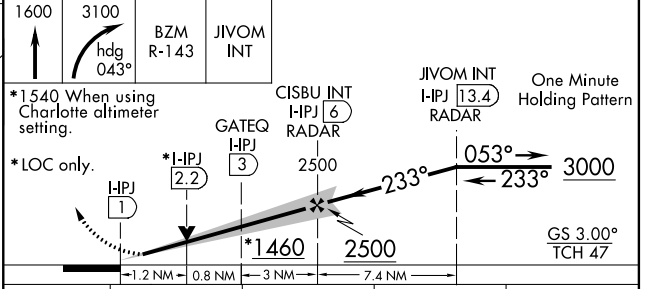
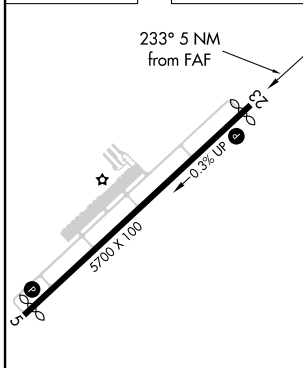
**ILS Z or LOC Z RWY 23**  
LINCOLNTON-LINCOLN COUNTY RGNL (IPJ)

▼ When local altimeter setting not received, use Charlotte altimeter setting: increase DA to 1212 feet and visibility 1/8 SM; increase all MDAs 80 feet and visibility S-LOC 23 Cats C/D 1/8 SM and Circling Cats C/D 1/4 SM and GATEQ Fix Minimums Cats C/D 1/4 SM. VDP NA when using Charlotte altimeter setting. Rwy 23 helicopter visibility reduction below 3/4 SM NA.  
▲ MISSED APPROACH: Climb to 1600 then climbing right turn to 3100 on heading 043° and BZM VOR/DME R-143 to JIVOM INT/I-PJ 13.4 DME/RADAR and hold.

AWOS-3 <b>119.675</b>	CHARLOTTE APP CON <b>134.75 257.2</b>	CLNC DEL (GCO) <b>124.9</b>	UNICOM <b>123.05</b> (CTAF) <b>0</b>
--------------------------	--	--------------------------------	---



ELEV <b>878</b>	TDZE <b>872</b>
-----------------	-----------------



CATEGORY	A	B	C	D
S-ILS 23	1149-7/8 277 (300-7%)			
S-LOC 23	1460-1	588 (600-1)	1460-1 3/4	588 (600-1 3/4)
<b>C</b> CIRCLING	1460-1	582 (600-1)	1640-2 1/4 762 (800-2 1/4)	1640-2 1/2 762 (800-2 1/2)
<b>GATEQ FIX MINIMUMS</b>				
S-LOC 23	1280-1	408 (500-1)	1280-1 1/8	408 (500-1 1/8)
<b>C</b> CIRCLING	1400-1 522 (600-1)	1440-1 562 (600-1)	1640-2 1/4 762 (800-2 1/4)	1640-2 1/2 762 (800-2 1/2)

FAF to MAP 5 NM					
Knots	60	90	120	150	180
Min:Sec	5:00	3:20	2:30	2:00	1:40

SE-2, 30 DEC 2021 to 27 JAN 2022

SE-2, 30 DEC 2021 to 27 JAN 2022