

KNIGHTS TWO DEPARTURE

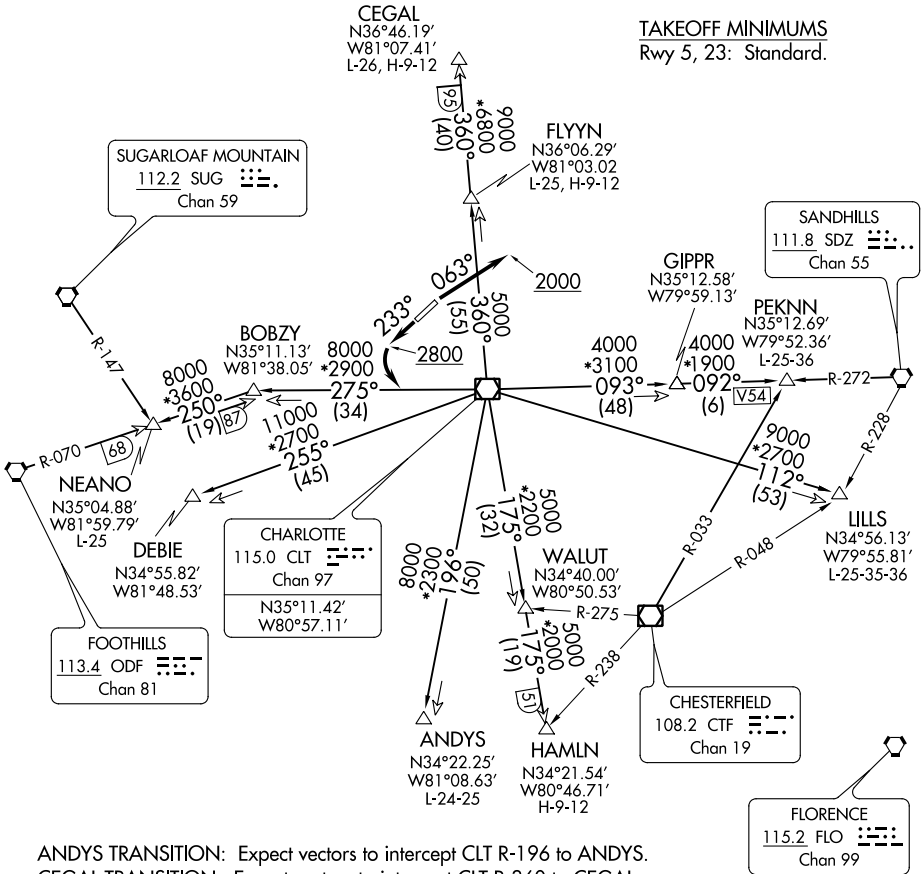
LINCOLN, NORTH CAROLINA

AWOS-3
119.675
CLNC DEL (GCO)
124.9
UNICOM (CTAF)
123.05
CHARLOTTE DEP CON
134.75 257.2

NOTE: For propeller aircraft only.
NOTE: RADAR and DME required.
NOTE: Turboprops: Operate in a manner that will result in best forward speed and climb rate.
NOTE: Transponder code will be issued via Charlotte clearance delivery.

**TOP ALTITUDE:
3000**

TAKEOFF MINIMUMS
Rwy 5, 23: Standard.



ANDYS TRANSITION: Expect vectors to intercept CLT R-196 to ANDYS.
CEGAL TRANSITION: Expect vectors to intercept CLT R-360 to CEGAL.
DEBIE TRANSITION: Expect vectors to intercept CLT R-255 to DEBIE.
FLYYN TRANSITION: Expect vectors to intercept CLT R-360 to FLYYN.
HAMLN TRANSITION: Expect vectors to intercept CLT R-175 to HAMLN.
LILLS TRANSITION: Expect vectors to intercept CLT R-112 to LILLS.
NEANO TRANSITION: Expect vectors to intercept CLT R-275 to BOBZY then ODF R-070 to NEANO.
PEKNN TRANSITION: Expect vectors to intercept CLT R-093 to GIPPR then SDZ R-272 to PEKNN.

(NARRATIVE ON FOLLOWING PAGE)

NOTE: Chart not to scale.

KNIGHTS TWO DEPARTURE

SE-2, 30 DEC 2021 to 27 JAN 2022

SE-2, 30 DEC 2021 to 27 JAN 2022