

(KWEEN4.KWEEN) 19003

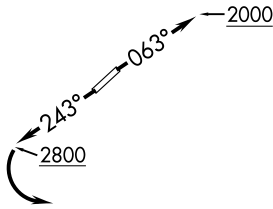
AL-6894 (FAA)

LINCOLN-TON-LINCOLN COUNTY RGNL (IPJ)  
LINCOLN, NORTH CAROLINA

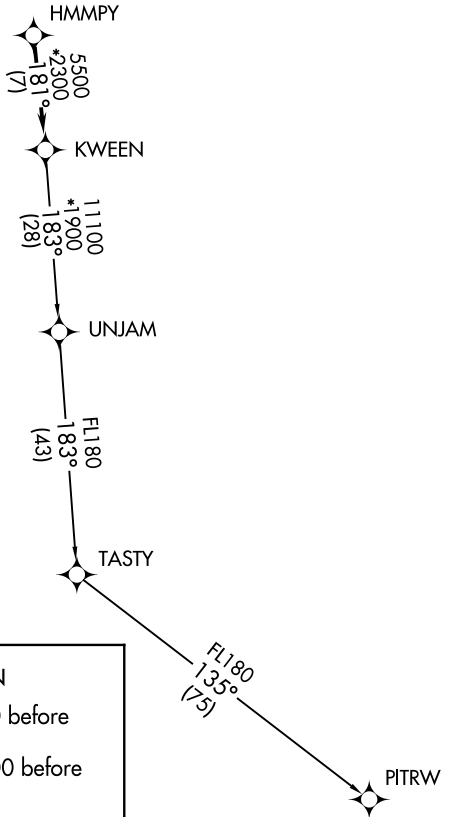
# KWEEN FOUR DEPARTURE (RNAV)

AWOS-3  
119.675  
CLNC DEL (GCO)  
124.9  
UNICOM (CTAF)  
123.05  
CHARLOTTE DEP CON  
134.75 257.2

**TOP ALTITUDE:  
3000**



**TAKEOFF MINIMUMS**  
Rwys 5, 23: Standard.



- NOTE: For turbojets only.
- NOTE: DME/DME/IRU or GPS required.
- NOTE: RNAV 1.
- NOTE: RADAR required.
- NOTE: If unable to accept climb rates, advise ATC on initial contact.
- NOTE: Upon reaching 10000 MSL, accelerate to and maintain 280K, if unable, advise ATC.
- NOTE: Transponder code will be issued via PDC or Charlotte CLNC DEL.

NOTE: Chart not to scale.

## DEPARTURE ROUTE DESCRIPTION

**TAKEOFF RWY 5:** Climb heading 063° to 2000 before proceeding on course.

**TAKEOFF RWY 23:** Climb heading 243° to 2800 before turning left.

Climb on heading assigned by ATC, expect RADAR vectors to HMMPY, then on track 181° to KWEEN, then on assigned transition, maintain 3000, expect filed altitude within 10 minutes after departure.

PITRW TRANSITION (KWEEN4.PITRW)

UNJAM TRANSITION (KWEEN4.UNJAM)

# KWEEN FOUR DEPARTURE (RNAV)

(KWEEN4.KWEEN) 03JAN19

LINCOLN, NORTH CAROLINA  
LINCOLN-TON-LINCOLN COUNTY RGNL (IPJ)

SE-2, 30 DEC 2021 to 27 JAN 2022