

WAAS CH 69210 W23A	APP CRS 233°	Rwy Idg TDZE Apt Elev	5501 872 878
--	------------------------	-----------------------------	---

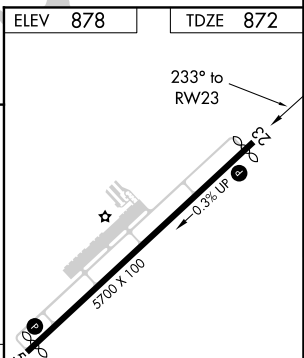
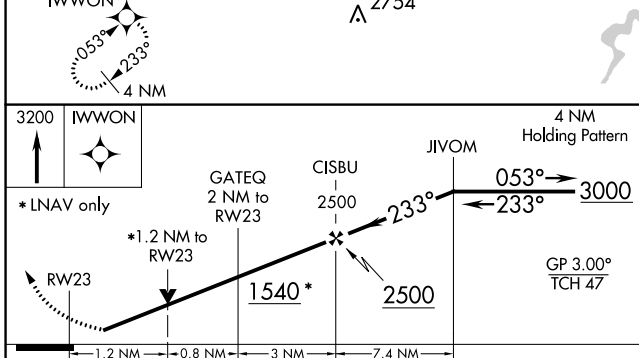
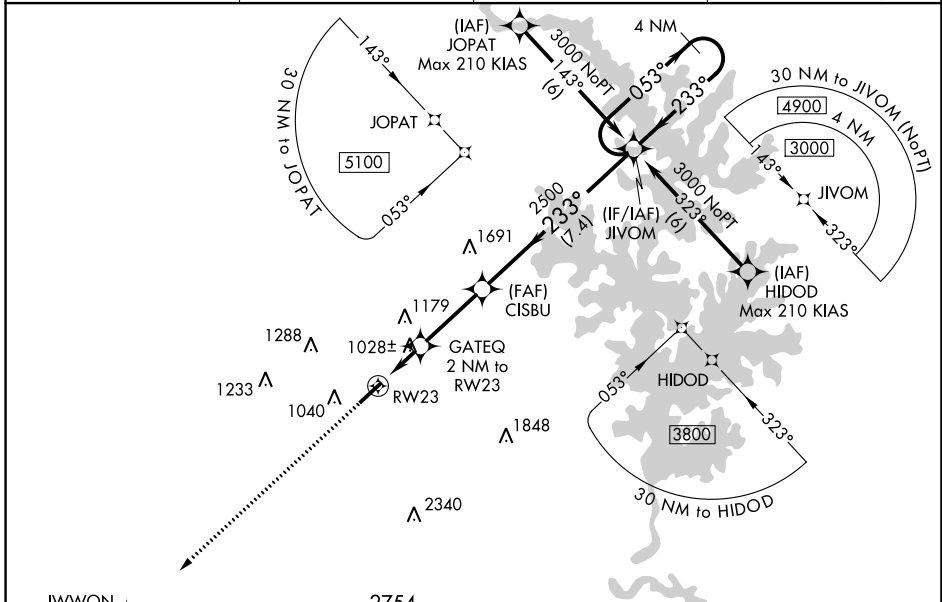
RNAV (GPS) RWY 23

LINCOLNTON-LINCOLN COUNTY RGNL (IPJ)

RNP APCH.
 ⚠ When local altimeter setting not received, use Charlotte altimeter setting: increase LPV DA to 1212 feet, LNAV/VNAV DA to 1204 feet and all visibilities $\frac{1}{8}$ SM; increase all MDAs 80 feet and visibility Cats C and D $\frac{1}{4}$ SM. Baro-VNAV and VDP NA when using Charlotte altimeter setting. Rwy 23 helicopter visibility reduction below $\frac{3}{4}$ SM NA. For uncompensated Baro-VNAV systems, LNAV/VNAV NA below -16°C or above 54°C .

MISSED APPROACH:
 Climb to 3200 direct
 IWWON and hold.

AWOS-3 119.675	CHARLOTTE APP CON 134.75 257.2	CLNC DEL (GCO) 124.9	UNICOM 123.05 (CTAF) 1
--------------------------	--	--------------------------------	---



CATEGORY	A	B	C	D
LPV DA		1149- $\frac{7}{8}$	277 (300- $\frac{7}{8}$)	
LNAV/VNAV DA		1141- $\frac{7}{8}$	269 (300- $\frac{7}{8}$)	
LNAV MDA	1280-1	408 (500-1)	1280-1 $\frac{1}{8}$	408 (500-1 $\frac{1}{8}$)
CIRCLING	1400-1 522 (600-1)	1440-1 562 (600-1)	1640-2 $\frac{1}{4}$ 762 (800-2 $\frac{1}{4}$)	1640-2 $\frac{1}{2}$ 762 (800-2 $\frac{1}{2}$)

ELEV 878	TDZE 872
----------	----------

REIL Rwy 5 and 23 **1**
 MIRL Rwy 5-23 **1**

SE-2, 30 DEC 2021 to 27 JAN 2022

SE-2, 30 DEC 2021 to 27 JAN 2022