

WAAS CH 78408 W05A	APP CRS 053°	Rwy Idg TDZE Apt Elev	5500 878 878
--	------------------------	-----------------------------	---

RNAV (GPS) RWY 5

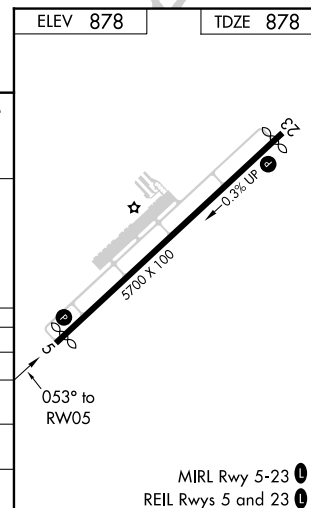
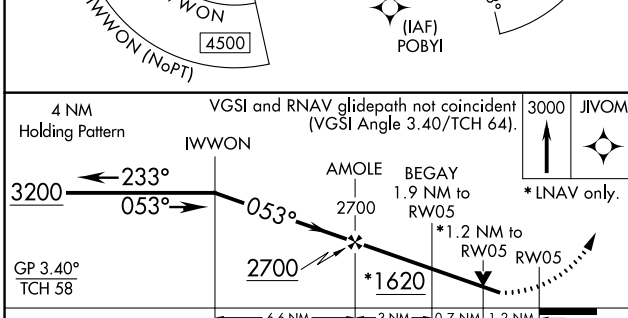
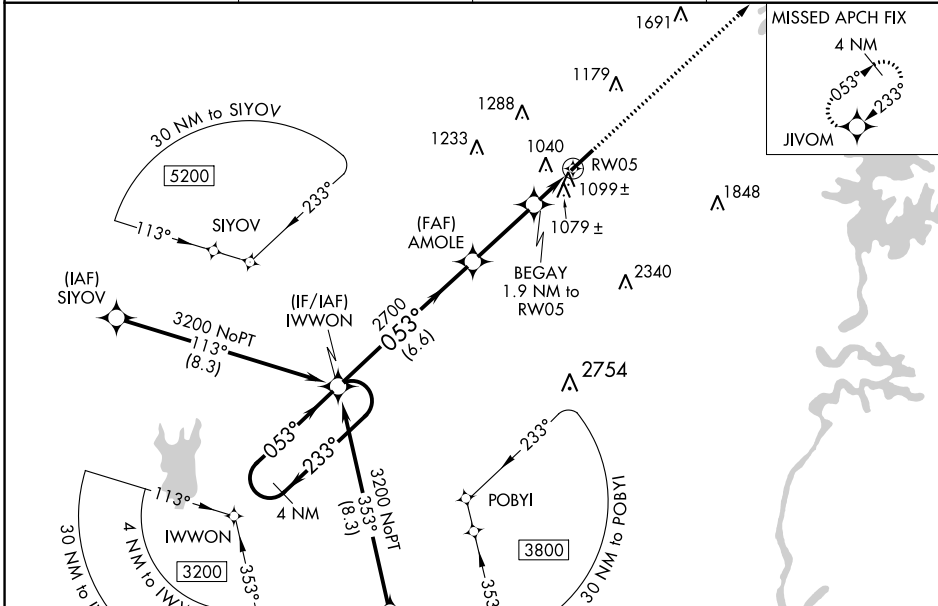
LINCOLNTON-LINCOLN COUNTY RGNL (IPJ)

RNP APCH.

When local altimeter setting not received, use Charlotte altimeter setting: increase LPV DA to 1395 feet, LNAV/VNAV DA to 1463 feet and visibility LNAV/VNAV ¼ SM; increase all MDAs 80 feet and visibility Cats C and D ¼ SM. Rwy 5 helicopter visibility reduction below ¾ SM NA. Baro-VNAV and VDP NA when using Charlotte altimeter setting. For uncompensated Baro-VNAV systems, LNAV/VNAV NA below -16°C or above 47°C.

MISSED APPROACH: Climb to 3000 direct JIVOM and hold.

AWOS-3 119.675	CHARLOTTE APP CON 134.75 257.2	CLNC DEL (GCO) 124.9	UNICOM 123.05 (CTAF)
--------------------------	--	--------------------------------	--------------------------------



CATEGORY	A	B	C	D
LPV DA	1332-1 ³ / ₈	454 (500-1 ³ / ₈)		NA
LNAV/VNAV DA	1400-1 ¹ / ₂	522 (600-1 ¹ / ₂)		NA
LNAV MDA	1360-1	482 (500-1)	1360-1 ³ / ₈	482 (500-1 ³ / ₈)
CIRCLING	1400-1 522 (600-1)	1440-1 562 (600-1)	1640-2 ¹ / ₄ 762 (800-2 ¹ / ₄)	1640-2 ¹ / ₂ 762 (800-2 ¹ / ₂)

SE-2, 30 DEC 2021 to 27 JAN 2022

SE-2, 30 DEC 2021 to 27 JAN 2022