


LOC I-JZW <b>110.95</b>	APP CRS <b>353°</b>	Rwy Idg TDZE Apt Elev	<b>6002</b> <b>697</b> <b>700</b>
----------------------------	------------------------	-----------------------------	---

**ILS or LOC RWY 35L**  
FORT WORTH SPINKS (FWS)

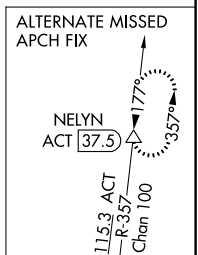
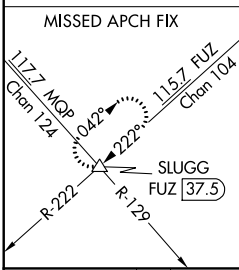
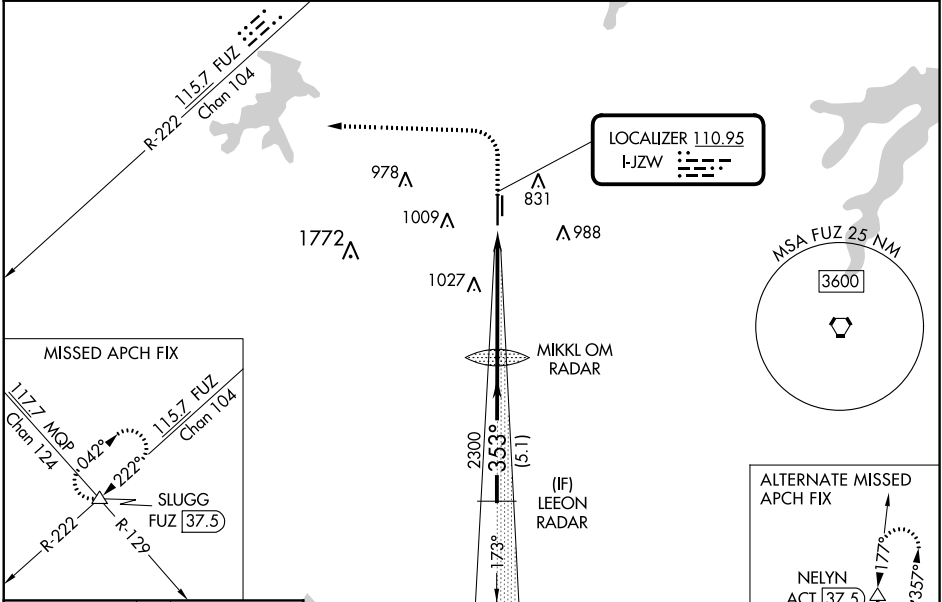
RADAR required for procedure entry.

**NA** Circling NA west of Rwy 17R-35L.  
For inop ALS increase S-LOC 35L Cat C/D visibility to 1¼ SM.

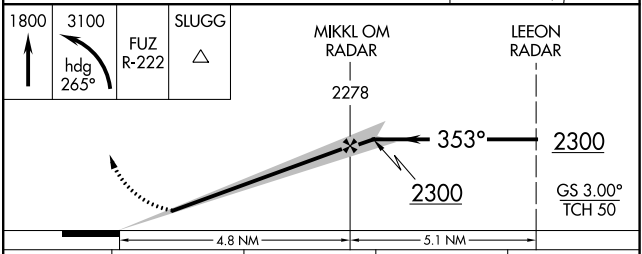
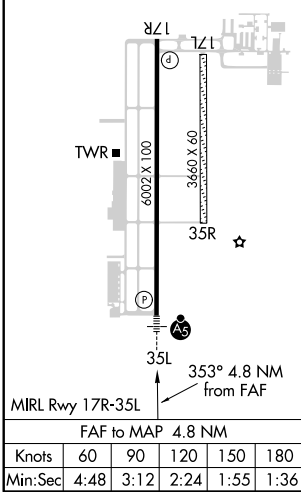
MALS R 

MISSED APPROACH: Climb to 1800 then climbing left turn to 3100 on heading 265° and FUZ VORTAC R-222 to SLUGG INT/ FUZ 37.5 DME and hold.

ATIS <b>120.025</b>	REGIONAL APP CON <b>135.975 379.9</b>	SPINKS TOWER ★ <b>124.625 (CTAF)</b>	GND CON <b>119.475</b>	UNICOM <b>122.7</b>
------------------------	--	---	---------------------------	------------------------



ELEV 700	TDZE 697
----------	----------



CATEGORY	A	B	C	D
S-ILS 35L	897-½ 200 (200-½)			
S-LOC 35L	1320-½ 623 (700-½)	1320-1¾ 623 (700-1¾)		
CIRCLING	1320-1 620 (700-1)	1340-1¾ 640 (700-1¾)	1340-2 640 (700-2)	

SC-2, 30 DEC 2021 to 27 JAN 2022

SC-2, 30 DEC 2021 to 27 JAN 2022