

WAAS CH 62899 W17A	APP CRS 173°	Rwy Idg 6002 TDZE 700 Apt Elev 700
--	------------------------	---

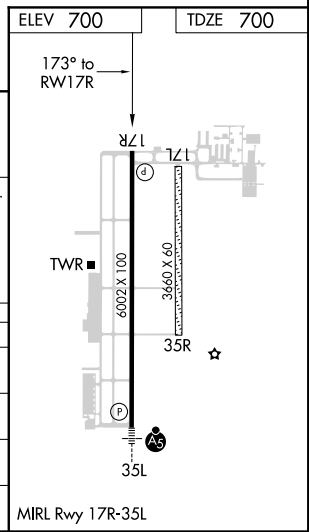
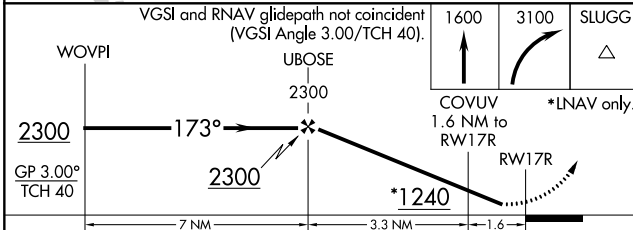
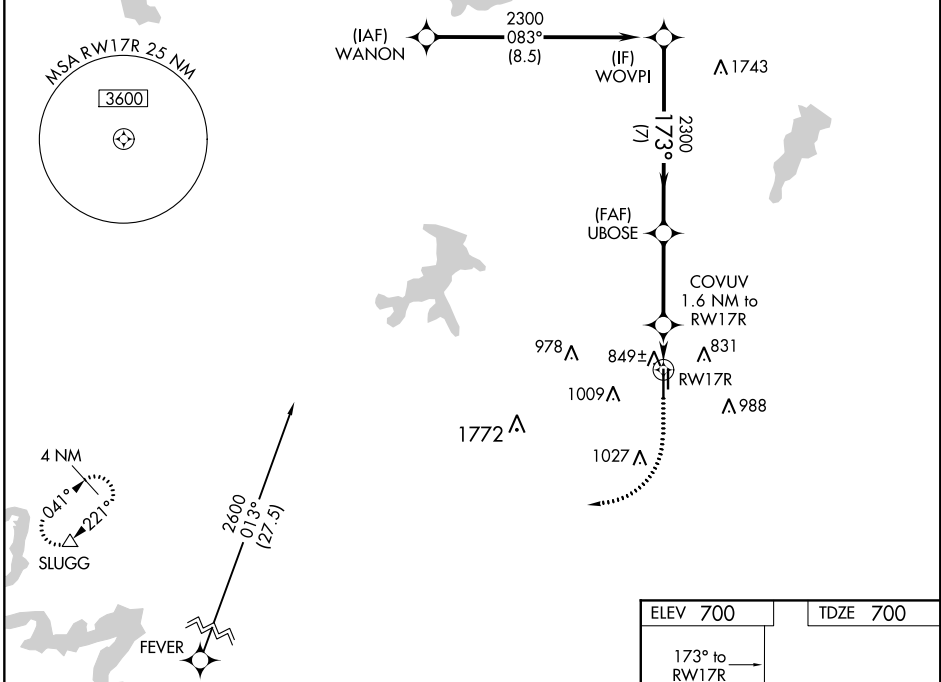
RNAV (GPS) RWY 17R

FORT WORTH SPINKS (FWS)

⚠ For uncompensated Baro-VNAV systems, LNAV/VNAV NA below -16°C (4°F) or above 39°C (102°F). Circling NA west of Rwy 17R-35L. DME/DME RNP-0.3 NA. Helicopter visibility reduction below ¾ SM NA.

MISSED APPROACH: Climb to 1600 then climbing right turn to 3100 direct SLUGG and hold.

ATIS 120.025	REGIONAL APP CON 135.975 379.9	SPINKS TOWER ★ 124.625 (CTAF) 0	GND CON 119.475	UNICOM 122.7
------------------------	--	--	---------------------------	------------------------



CATEGORY	A	B	C	D
LPV DA	950-7/8 250 (300-7/8)			
LNAV/VNAV DA	1030-1 1/8 330 (400-1 1/8)			
LNAV MDA	1100-1 400 (400-1)	1100-1 1/8 400 (400-1 1/8)		
CIRCLING	1200-1 500 (500-1)	1340-1 3/4 640 (700-1 3/4)	1340-2 640 (700-2)	

SC-2, 30 DEC 2021 to 27 JAN 2022

SC-2, 30 DEC 2021 to 27 JAN 2022