


WAAS CH <b>57999</b> <b>W35A</b>	APP CRS <b>353°</b>	Rwy Idg TDZE Apt Elev	<b>6002</b> <b>697</b> <b>700</b>
--	------------------------	-----------------------------	---

# RNAV (GPS) RWY 35L

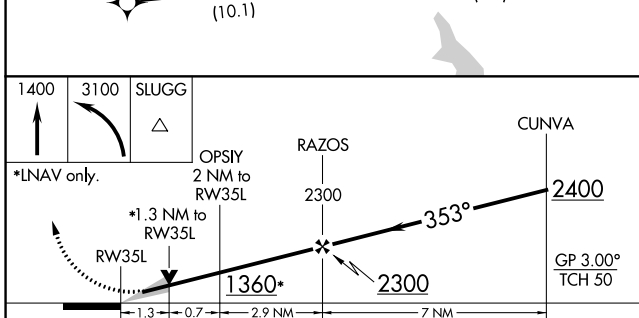
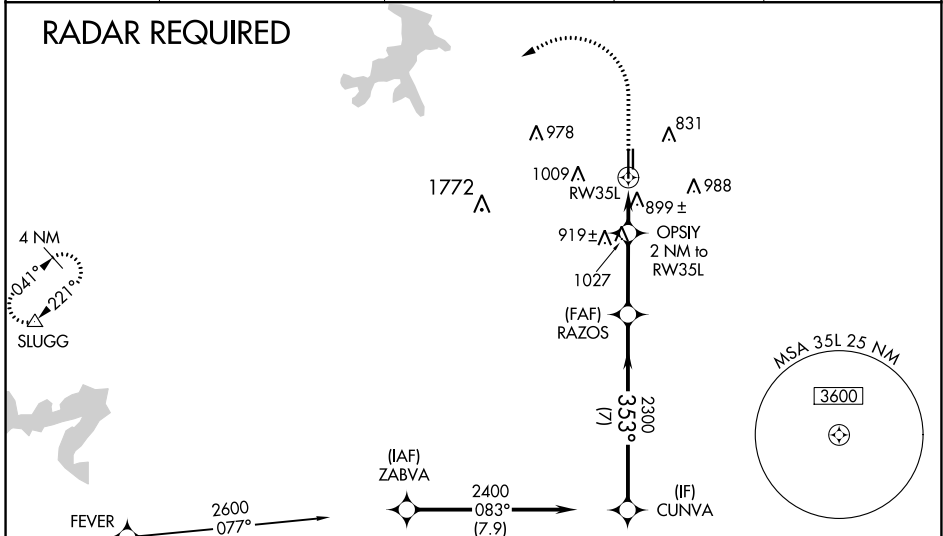
FORT WORTH SPINKS (FWS)

**⚠** For uncompensated Baro-VNAV systems, LNAV/VNAV NA below -16°C (4°F) or above 39°C (102°F). Circling NA west of Rwy 17R-35L. DME/DME RNP-0.3 NA. For inop MALSRL increase LNAV/VNAV all Cats visibility to 1½ mile and increase LNAV Cats C/D visibility to 1¾ mile.

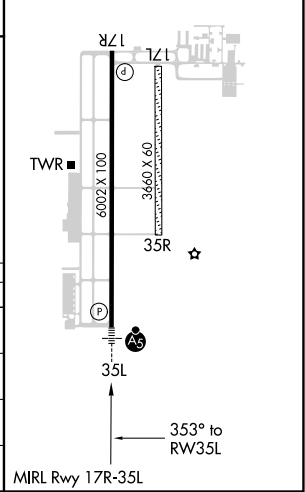
**MALSRL** 

**MISSED APPROACH:** Climb to 1400 then climbing left turn to 3100 direct SLUGG and hold.

ATIS <b>120.025</b>	REGIONAL APP CON <b>135.975 379.9</b>	SPINKS TOWER ★ <b>124.625</b> (CTAF) 	GND CON <b>119.475</b>	UNICOM <b>122.7</b>
------------------------	--	---	---------------------------	------------------------



ELEV 700	TDZE 697
----------	----------



CATEGORY	A	B	C	D
LPV DA	897-½		200 (200-½)	
LNAV/VNAV DA	1193-1¼		496 (500-1¼)	
LNAV MDA	1160-½ 463 (500-½)		1160-1 463 (500-1)	
CIRCLING	1200-1 500 (500-1)		1340-1¾ 640 (700-1¾) 1340-2 640 (700-2)	

SC-2, 30 DEC 2021 to 27 JAN 2022

SC-2, 30 DEC 2021 to 27 JAN 2022