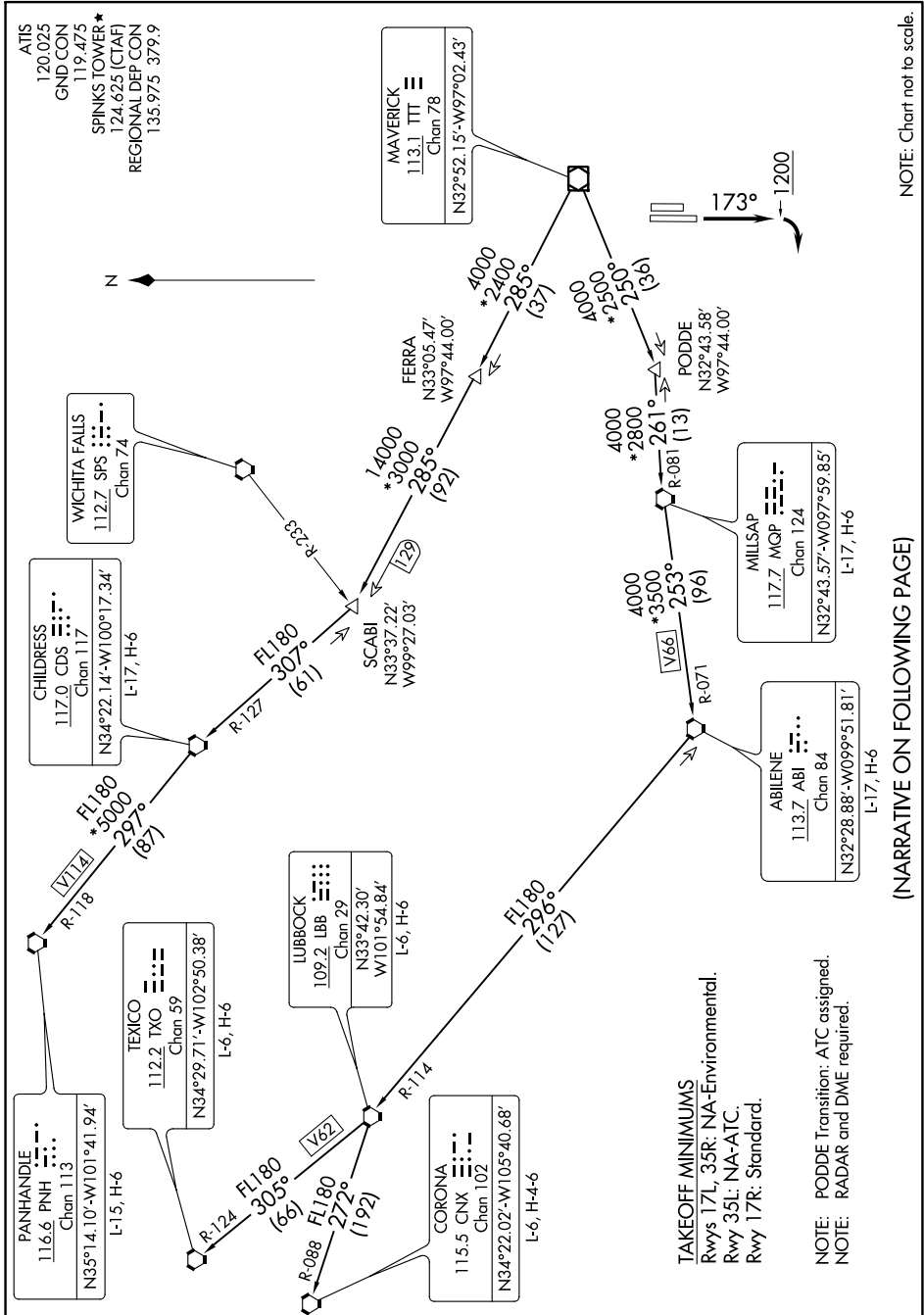


WORTH SEVEN DEPARTURE

SC-2, 30 DEC 2021 to 27 JAN 2022



NOTE: Chart not to scale.

WORTH SEVEN DEPARTURE

(NARRATIVE ON FOLLOWING PAGE)

SC-2, 30 DEC 2021 to 27 JAN 2022

TAKEOFF MINIMUMS
 Rwy 17L, 35R: NA-Environmental.
 Rwy 35L: NA-ATC.
 Rwy 17R: Standard.

NOTE: PODDE Transition: ATC assigned.
 NOTE: RADAR and DME required.