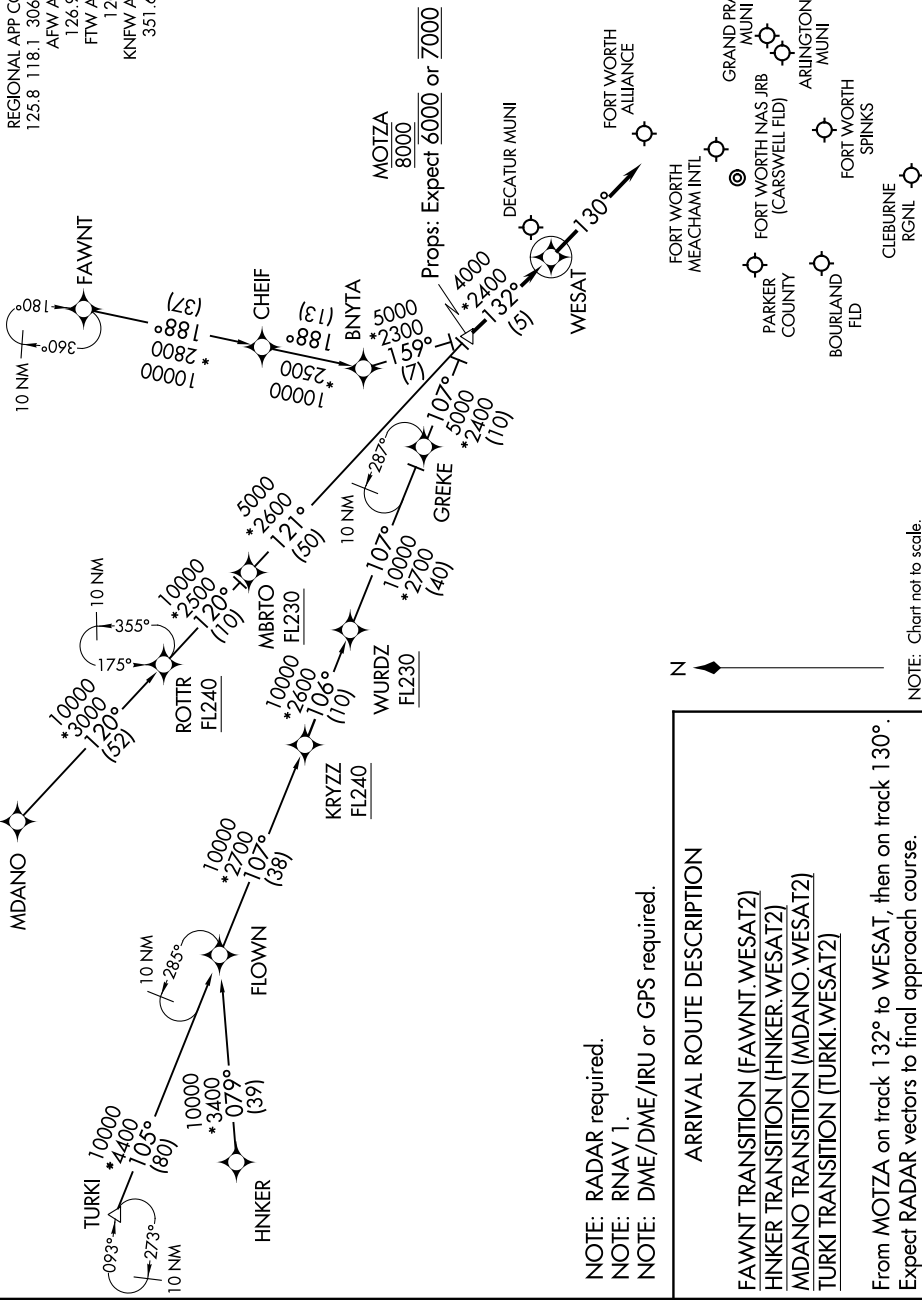


WESAT TWO ARRIVAL (RNAV)

DALLAS-FORT WORTH, TEXAS

REGIONAL APP CON
125.8 118.1 306.95
AFW ATIS
126.925
FTW ATIS
120.7
KNFW ATIS *
351.675



- NOTE: RADAR required.
- NOTE: RNAV 1.
- NOTE: DME/DME/IRU or GPS required.

ARRIVAL ROUTE DESCRIPTION

FAWNT TRANSITION (FAWNT.WESAT2)
 HNKER TRANSITION (HNKER.WESAT2)
 MDANO TRANSITION (MDANO.WESAT2)
 TURKI TRANSITION (TURKI.WESAT2)

From MOTZA on track 132° to WESAT, then on track 130°. Expect RADAR vectors to final approach course.

NOTE: Chart not to scale.

SC-2, 30 DEC 2021 to 27 JAN 2022

SC-2, 30 DEC 2021 to 27 JAN 2022

WESAT TWO ARRIVAL (RNAV)

(MOTZA.WESAT2) 25JUN15

DALLAS-FORT WORTH, TEXAS