

LOC/DME I-TEX 109.3 Chan 30	APP CRS 093°	Rwy Idg 6911 TDZE 9037 Apt Elev 9070
------------------------------------------	------------------------	-----------------------------------------------------------------

LOC RWY 9

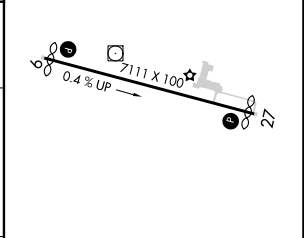
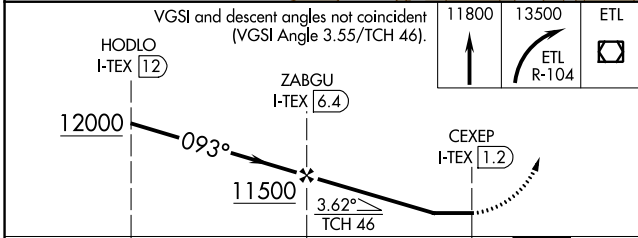
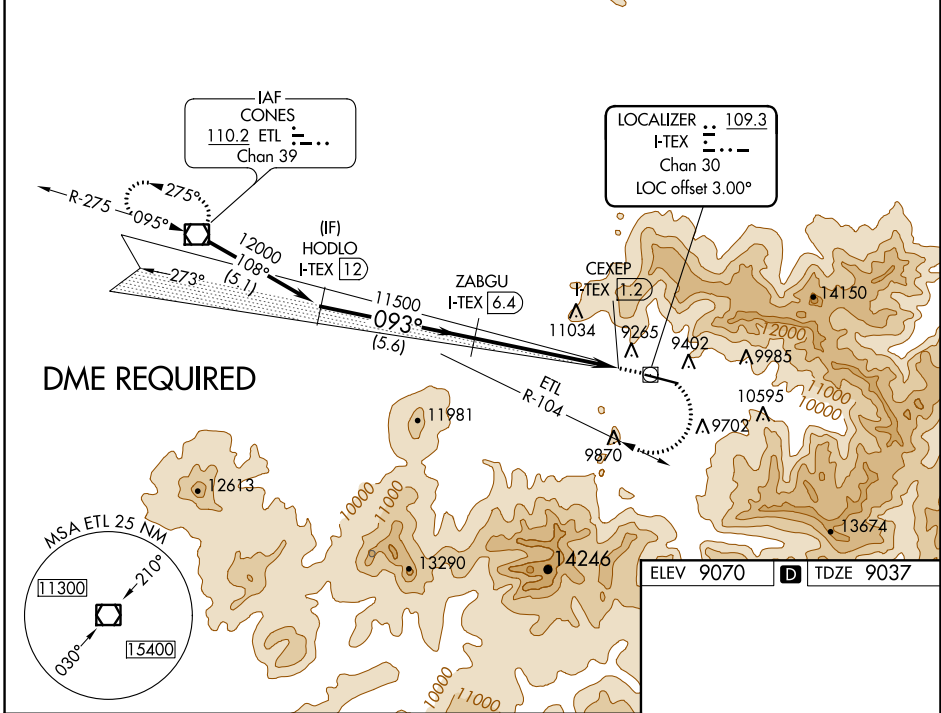
TELLURIDE RGNL (TEX)

⚠ Circling NA north of Rwy 9-27.
⚠ Circling NA at night.
⚠ DME required.

⚠ MISSED APPROACH: Climb to 11800 then descending right turn to 13500 on ETL R-104 to ETL VOR/DME and hold.

AWOS-3 118.325	DENVER CENTER 125.35 354.05	UNICOM 123.0 (CTAF) 0
--------------------------	---------------------------------------	---------------------------------

Procedure NA for arrivals at ETL VOR/DME on V382 northwest bound.



	VGSi and descent angles not coincident (VGSi Angle 3.55/TCH 46).		11800	13500	ETL
			↑	↪	□
			HODLO I-TEX 12	ZABGU I-TEX 6.4	CEXEP I-TEX 1.2
			12000	11500	
			093°	3.62°	
			5.6 NM	5.2 NM	1 NM
CATEGORY	A	B	C	D	
S-9	11340-1¼ 2303 (2300-1¼)	11340-1½ 2303 (2300-1½)		NA	
CIRCLING	11340-1¼ 2270 (2300-1¼)	11340-1½ 2270 (2300-1½)		NA	

ELEV 9070	TDZE 9037
HIRL Rwy 9-27 0	REIL Rwys 9 and 27 0

SW-1, 30 DEC 2021 to 27 JAN 2022

SW-1, 30 DEC 2021 to 27 JAN 2022