

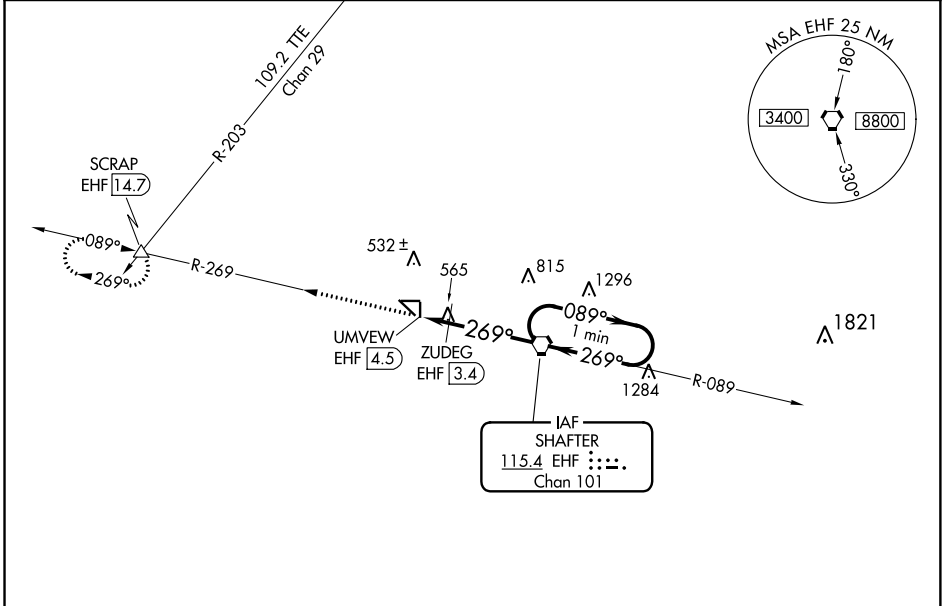
VORTAC EHF 115.4 Chan 101	APP CRS 269°	Rwy Idg TDZE Apt Elev	N/A N/A 425
---	------------------------	-----------------------------	--

VOR-A
SHAFTER-MINTER FLD (MIT)

NA Circling to Rwy 17, 35, 8 and 26 NA at night. When local altimeter setting not received, use Bakersfield altimeter setting and increase all MDAS 40 feet and increase Cat C visibility to 1 3/4.

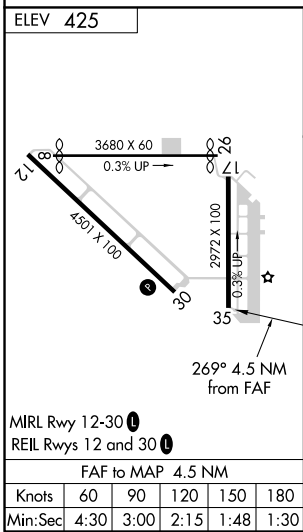
MISSED APPROACH: Climb to 4000 on EHF VORTAC R-269 to SCRAP INT/EHF 14.7 DME and hold, continue climb-in-hold to 4000.

AWOS-3 121.125	BAKERSFIELD APP CON * 126.45 270.3	CTAF 122.9
--------------------------	--	----------------------



SW-3, 30 DEC 2021 to 27 JAN 2022

SW-3, 30 DEC 2021 to 27 JAN 2022



4000	SCRAP	EHF R-269		ZUDEG EHF 3.4	EHF VORTAC	One Minute Holding Pattern	
		UMVEW EHF 4.5	269°	1000*	2600	089°	2900
		1.1 NM		3.4 NM			
CATEGORY		A	B	C	D		
CIRCLING		1000-1	575 (600-1)	1000-1 1/2	575 (600-1 1/2)	NA	
ZUDEG FIX MINIMUMS							
CIRCLING		900-1	475 (500-1)	940-1 1/2	515 (600-1 1/2)	NA	

*1040 when using Bakersfield altimeter setting.