

WESLACO, TEXAS

AL-6930 (FAA)

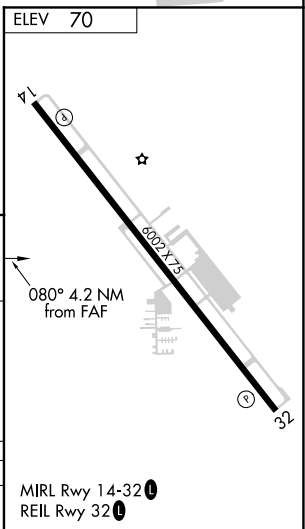
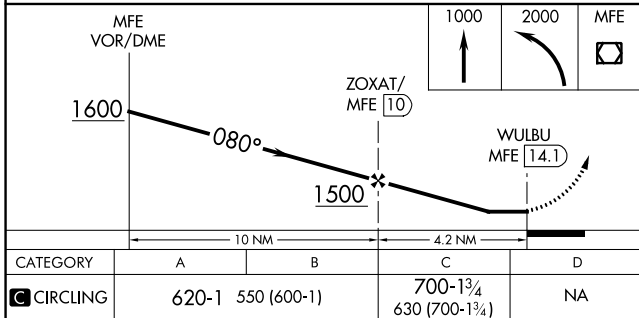
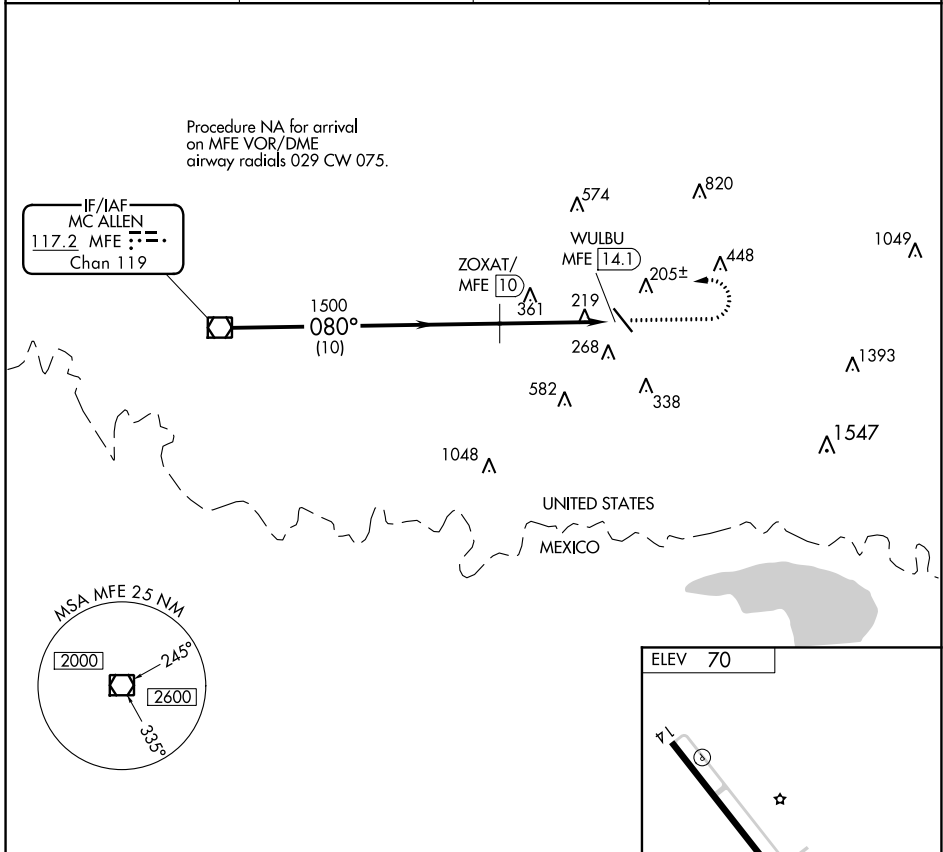
21336

VOR/DME MFE <b>117.2</b> Chan <b>119</b>	APP CRS <b>080°</b>	Rwy Idg TDZE Apt Elev	<b>N/A</b> <b>N/A</b> <b>70</b>
--	------------------------	-----------------------------	---------------------------------------

**VOR-A**  
MID VALLEY (TXW)

DME required.		MISSED APPROACH: Climb to 1000 then climbing left turn to 2000 direct MFE VOR/DME.	
▼ When local altimeter not received, use McAllen altimeter setting and increase all MDA 40 feet.			

AWOS-3PT <b>118.575</b>	VALLEY APP CON <b>121.0 284.7</b>	CLNC DEL <b>125.95</b>	UNICOM <b>122.8 (CTAF) 0</b>
----------------------------	--------------------------------------	---------------------------	---------------------------------



WESLACO, TEXAS  
Orig-B 19JUL18

26°11'N-97°58'W

MID VALLEY (TXW)  
**VOR-A**

SC-3, 30 DEC 2021 to 27 JAN 2022

SC-3, 30 DEC 2021 to 27 JAN 2022