

WAAS CH 69331 W12A	APP CRS 124°	Rwy Idg TDZE Apt Elev	3601 1748 1748
--	------------------------	-----------------------------	---

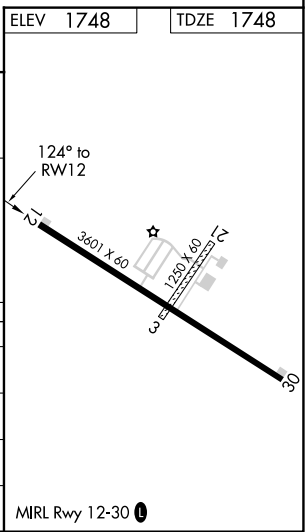
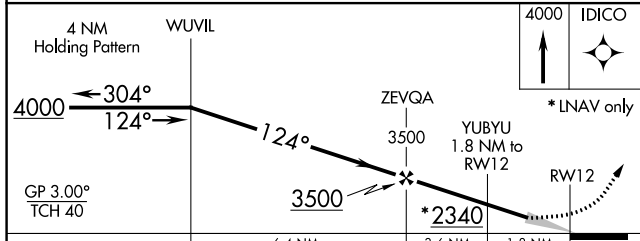
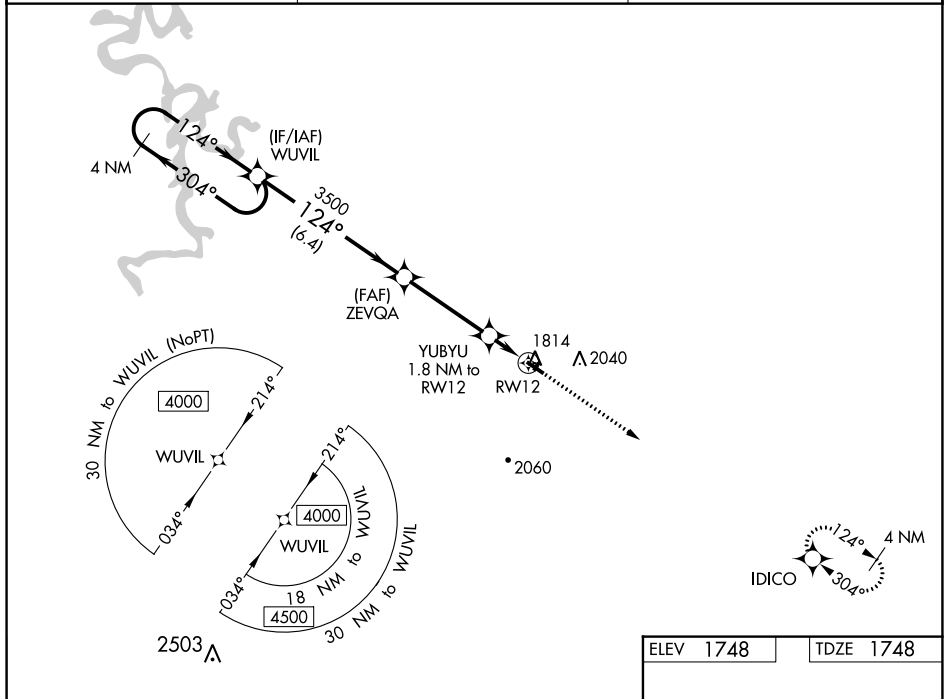
RNAV (GPS) RWY 12

HUNTSVILLE MUNI (H34)

NA Baro-VNAV NA. DME/DME RNP-0.3 NA. Use Springdale altimeter setting; when not received, use Drake Fld altimeter setting and increase all DA 18 feet and all MDA 20 feet; increase LPV all Cats, LNAV/VNAV all Cats and LNAV Cat C visibilities 1/8 mile.

MISSED APPROACH:
Climb to 4000 direct IDICO and hold.

ASG AWOS-3 124.675	RAZORBACK APP CON * 126.6 305.2	UNICOM 122.8 (CTAF) 0
------------------------------	---	---------------------------------



CATEGORY	A	B	C	D
LPV DA	2097-1 1/8 349 (400-1 1/8)			NA
LNAV/VNAV DA	2097-1 1/8 349 (400-1 1/8)			NA
LNAV MDA	2180-1	432 (500-1)	2180-1 1/4 432 (500-1 1/4)	NA
C CIRCLING	2280-1 532 (600-1)	2520-1 772 (800-1)	2520-2 1/4 772 (800-2 1/4)	NA

SC-1, 30 DEC 2021 to 27 JAN 2022

SC-1, 30 DEC 2021 to 27 JAN 2022