

WAAS CH <b>62817</b> <b>W17A</b>	APP CRS <b>174°</b>	Rwy Idg <b>3700</b> TDZE <b>12</b> Apt Elev <b>12</b>
--	------------------------	---

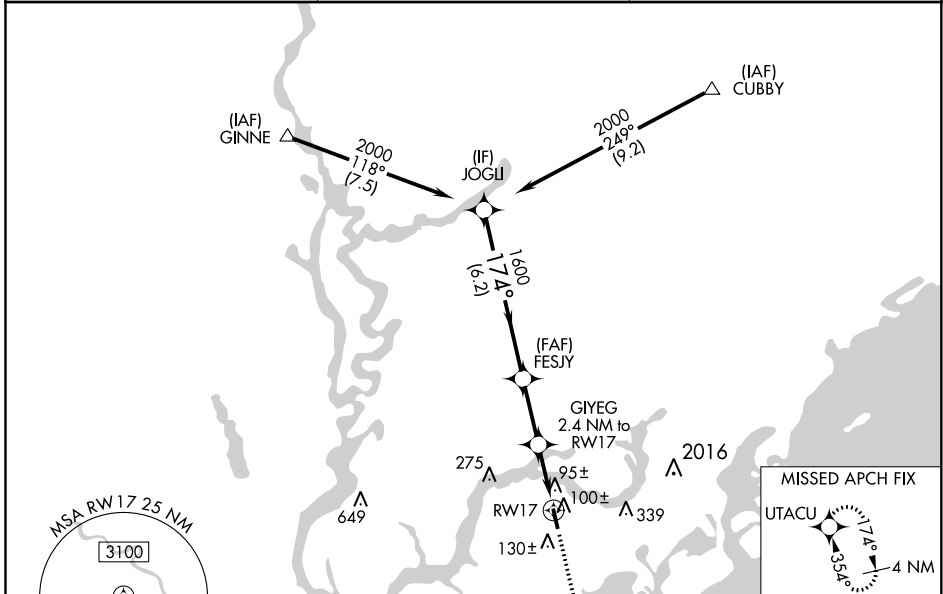
# RNAV (GPS) RWY 17

MT PLEASANT RGNL-FAISON FLD (L.R.O)

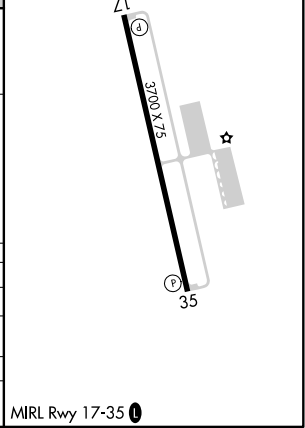
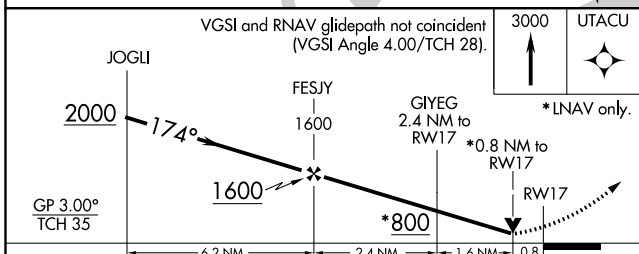
**⚠** For uncompensated Baro-VNAV systems, LNAV/VNAV NA below -15°C (5°F) or above 54°C (130°F). DME/DME RNP-0.3 NA. When local altimeter setting not received, use Charleston AFB/Intl altimeter setting and increase all DA/MDA 40 feet, increase LPV, LNAV/VNAV all Cats, and LNAV Cat C visibility ½ mile. Baro-VNAV NA with Charleston AFB/Intl altimeter setting. VDP NA with Charleston AFB/Intl altimeter setting. Helicopter visibility reduction below ¾ SM NA.

**MISSED APPROACH:** Climb to 3000 direct UTACU and hold, continue climb-in-hold to 3000.

AWOS-3 <b>118.625</b>	CHARLESTON APP CON <b>119.3 379.925</b>	UNICOM <b>122.7 (CTAF) 0</b>
--------------------------	--	---------------------------------



ELEV <b>12</b>	TDZE <b>12</b>
----------------	----------------



CATEGORY	A	B	C	D
LPV DA	307-1	295 (300-1)		NA
LNAV/VNAV DA	389-1¼	377 (400-1¼)		NA
LNAV MDA	360-1	348 (400-1)		NA
CIRCLING	460-1 448 (500-1)	520-1 508 (600-1)	640-1¾ 628 (700-1¾)	NA

MRL Rwy 17-35 0

SE-2, 30 DEC 2021 to 27 JAN 2022

SE-2, 30 DEC 2021 to 27 JAN 2022