

WAAS CH <b>48841</b> <b>W23A</b>	APP CRS <b>228°</b>	Rwy Idg TDZE Apt Elev	<b>3398</b> <b>878</b> <b>879</b>
--	------------------------	-----------------------------	---

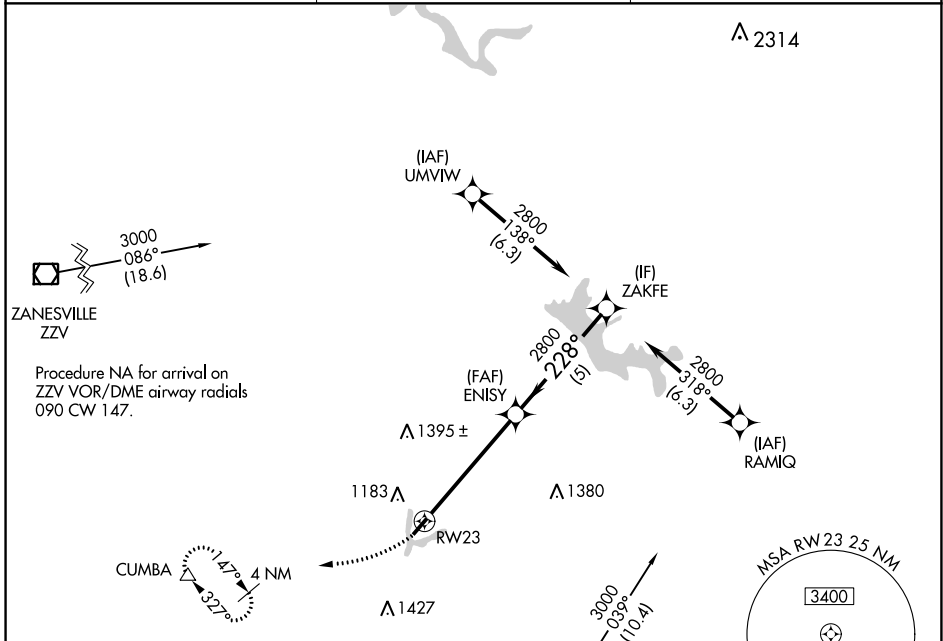
# RNAV (GPS) RWY 23

NOBLE COUNTY (I10)

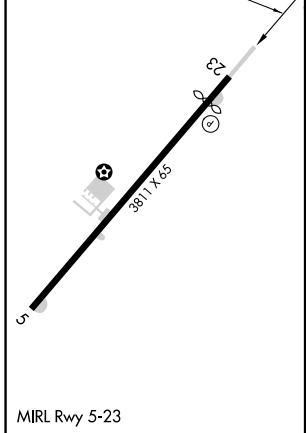
**⚠** Rwy 23 helicopter visibility reduction below 1 SM NA.  
**⚠** DME/DME RNP-0.3 NA. Procedure NA at night. Use Zanesville altimeter setting; when not received, procedure NA.

MISSED APPROACH: Climbing right turn to 3000 direct to CUMBA and hold.

ZVV ASOS <b>114.95</b>	INDIANAPOLIS CENTER <b>124.45 370.9</b>	UNICOM <b>122.8 (CTAF) 0</b>
---------------------------	--	---------------------------------

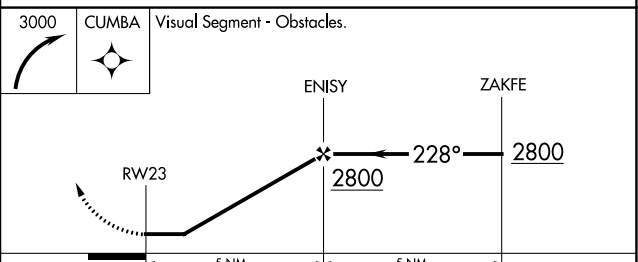


ELEV 879	TDZE 878
----------	----------



Procedure NA for arrivals at CADRE on V59-115 southbound.

Visual Segment - Obstacles.



CATEGORY	A	B	C	D
LP MDA	1580-1	702 (800-1)	1580-2 702 (800-2)	NA
LNAV MDA	1620-1 742 (800-1)	1620-1¼ 742 (800-1¼)	1620-2 742 (800-2)	NA
<b>C</b> CIRCLING	1620-1	741 (800-1)	1660-2¼ 781 (800-2¼)	NA

EC-2, 30 DEC 2021 to 27 JAN 2022

EC-2, 30 DEC 2021 to 27 JAN 2022