

WAAS CH <b>57934</b> <b>W25A</b>	APP CRS <b>246°</b>	Rwy Idg TDZE Apt Elev	<b>3632</b> <b>1072</b> <b>1072</b>
--	------------------------	-----------------------------	---

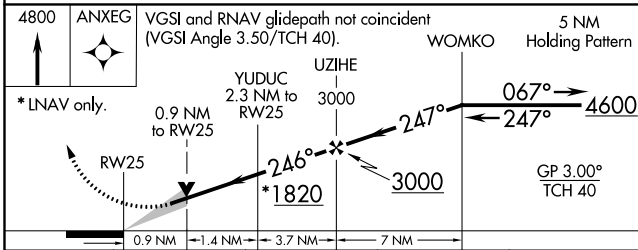
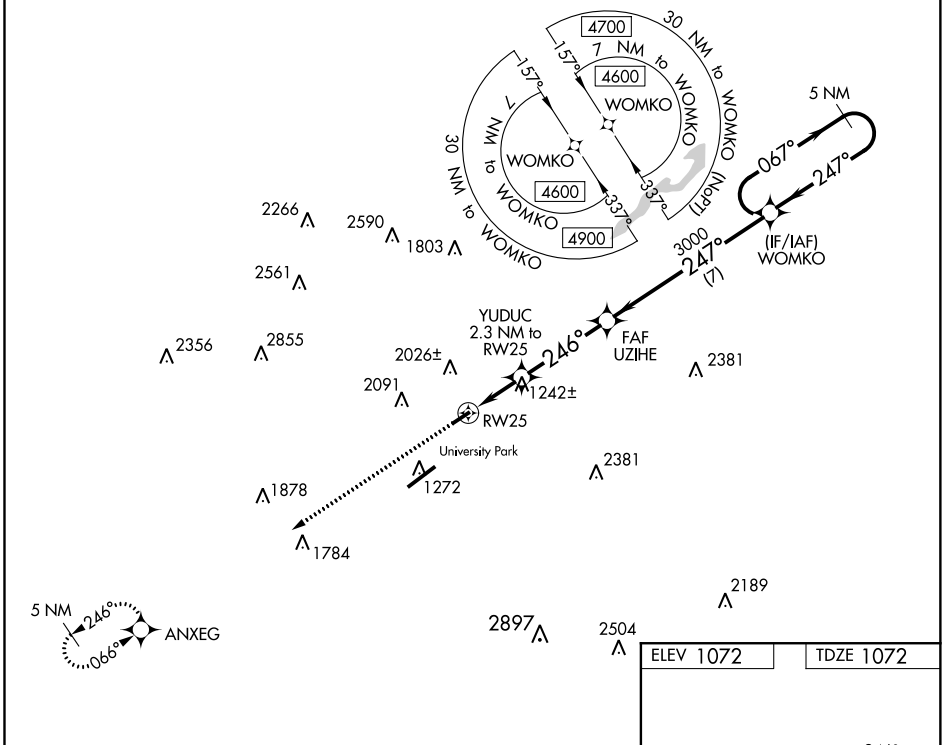
# RNAV (GPS) RWY 25

BELLEFONTE (N96)

**Baro-VNAV NA. DME/DME RNP-0.3 NA. VDP NA with Clearfield altimeter setting. Use State College altimeter setting, when not received use Clearfield altimeter setting and increase all DA 129 feet and all MDA 140 feet. Increase LPV and LNAV/VNAV all Cats visibility ½ mile. Night landing: Rwy 7 NA. Circling NA southeast of Rwy 7-25.**

**MISSED APPROACH:** Climb to 4800 direct ANXEG and hold, continue climb-in-hold 4800.

UNV AWOS-3 <b>127.65</b>	NEW YORK CENTER <b>134.8 338.3</b>	CLNC DEL <b>119.625</b>	CLNC DEL <b>118.55</b> (When twr closed)	UNICOM <b>122.8</b> (CTAF)	<b>122.7</b> <b>0</b>
-----------------------------	---------------------------------------	----------------------------	--	-------------------------------	-----------------------



CATEGORY	A	B	C	D
LPV DA	1367-1	295 (300-1)		NA
LNAV/VNAV DA	1701-2¼	629 (700-2¼)		NA
LNAV MDA	1600-1	528 (500-1)		NA
CIRCLING	2140-1¼ 1068 (1100-1¼)	2380-1½ 1308 (1400-1½)		NA

ELEV 1072	TDZE 1072
LIRL Rwy 7-25 <b>0</b>	

NE-4, 30 DEC 2021 to 27 JAN 2022

NE-4, 30 DEC 2021 to 27 JAN 2022