

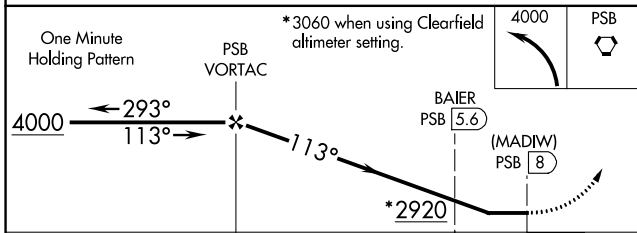
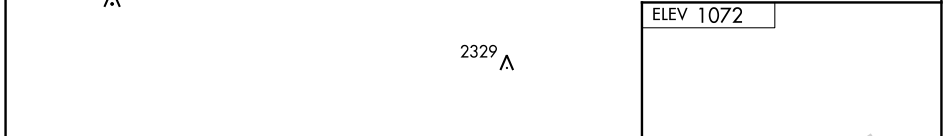
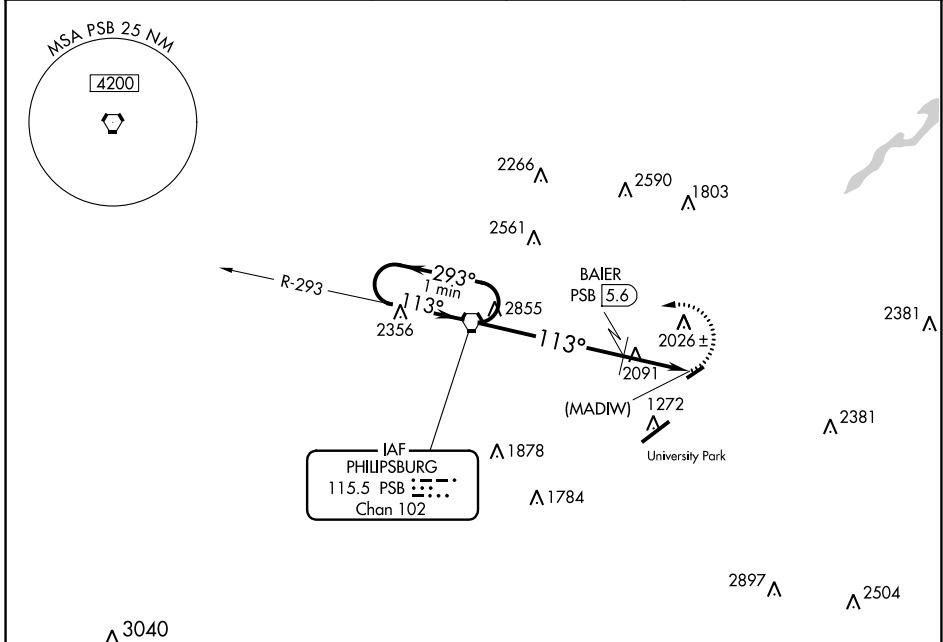
VORTAC PSB <b>115.5</b> Chan <b>102</b>	APP CRS <b>113°</b>	Rwy Idg TDZE Apt Elev <b>N/A</b> <b>N/A</b> <b>1072</b>
---	------------------------	--

**VOR-A**  
BELLEFONTE (N96)

**NA** Circling to Rwy 7 NA at night. Helicopter visibility reduction below 1 SM NA. Use State College altimeter setting, when not received use Clearfield altimeter setting and increase all MDA 140 feet. Circling NA southeast of Rwy 7-25.

MISSED APPROACH: Climbing left turn to 4000 direct PSB VORTAC and hold.

UNV AWOS-3 <b>127.65</b>	NEW YORK CENTER <b>134.8 338.3</b>	CLNC DEL <b>119.625</b>	CLNC DEL <b>118.55</b> (When UNV twr closed)	UNICOM <b>122.8</b> (CTAF)	<b>122.7 0</b>
-----------------------------	---------------------------------------	----------------------------	--	-------------------------------	----------------



ELEV 1072	
LIRL Rwy 7-25 0	
FAF to MAP 8 NM	
Knots	60 90 120 150 180
Min:Sec	8:00 5:20 4:00 3:12 2:40

CATEGORY	A	B	C	D
<b>C</b> CIRCLING	2920-1¼ 1848 (1900-1¼)	2920-1½ 1848 (1900-1½)		NA
BAIER FIX MINIMUMS (DME REQUIRED)				
<b>C</b> CIRCLING	2360-1¼ 1288 (1300-1¼)	2380-1½ 1308 (1400-1½)		NA

NE-4, 30 DEC 2021 to 27 JAN 2022

NE-4, 30 DEC 2021 to 27 JAN 2022