

WAAS CH <b>77742</b> <b>W18A</b>	APP CRS <b>182°</b>	Rwy ldg TDZE Apt Elev	<b>4300</b> <b>1599</b> <b>1607</b>
--	------------------------	-----------------------------	---

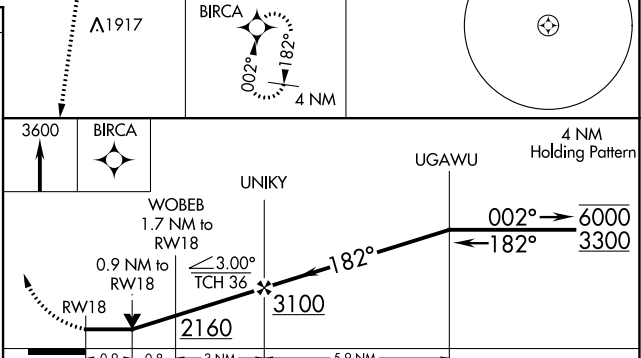
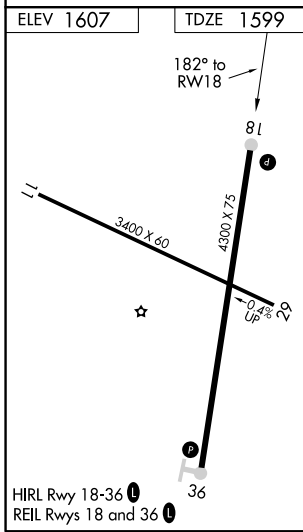
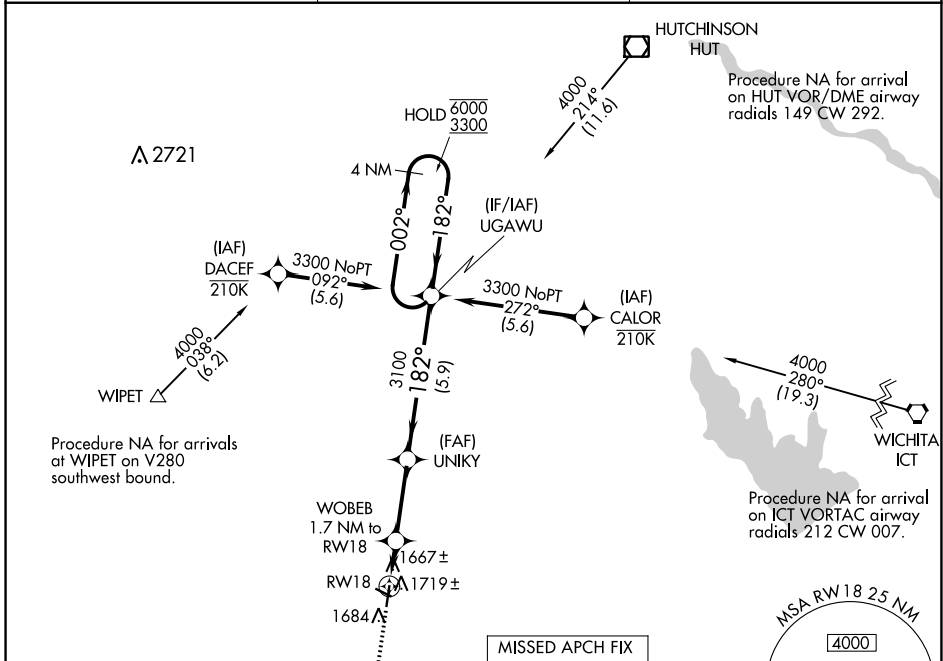
# RNAV (GPS) RWY 18

KINGMAN/CLYDE CESSNA FLD (9K8)

RNP APCH. MISSED APPROACH: Climb to 3600 direct BIRCA and hold.

▼ Rwy 18 helicopter visibility reduction below 3/4 SM NA. Circling Rwy 11, 29 NA at night.

AWOS-3PT <b>119.325</b>	WICHITA APP CON <b>125.5 306.2</b>	UNICOM <b>122.8</b> (CTAF) <b>0</b>
----------------------------	---------------------------------------	--



CATEGORY	A	B	C	D
LP MDA	1920-1 321 (400-1)			NA
LNAV MDA	1980-1 381 (400-1)	1980-1 1/8 381 (400-1 1/8)		NA
<b>C</b> CIRCLING	2040-1 433 (500-1)	2060-1 453 (500-1)	2160-1 1/2 553 (600-1 1/2)	NA

NC-2, 30 DEC 2021 to 27 JAN 2022

NC-2, 30 DEC 2021 to 27 JAN 2022