

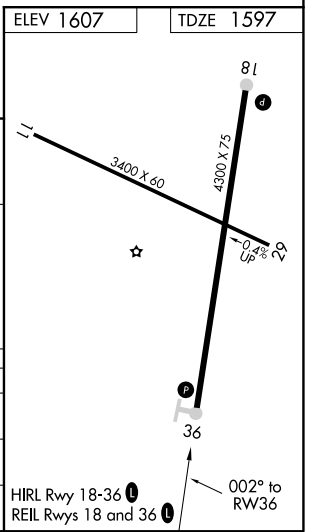
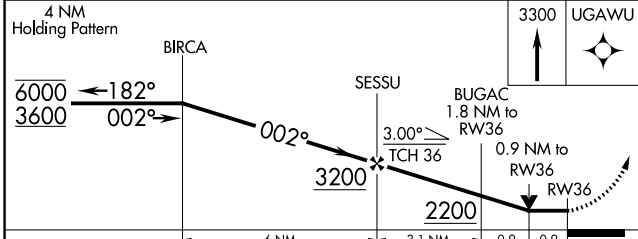
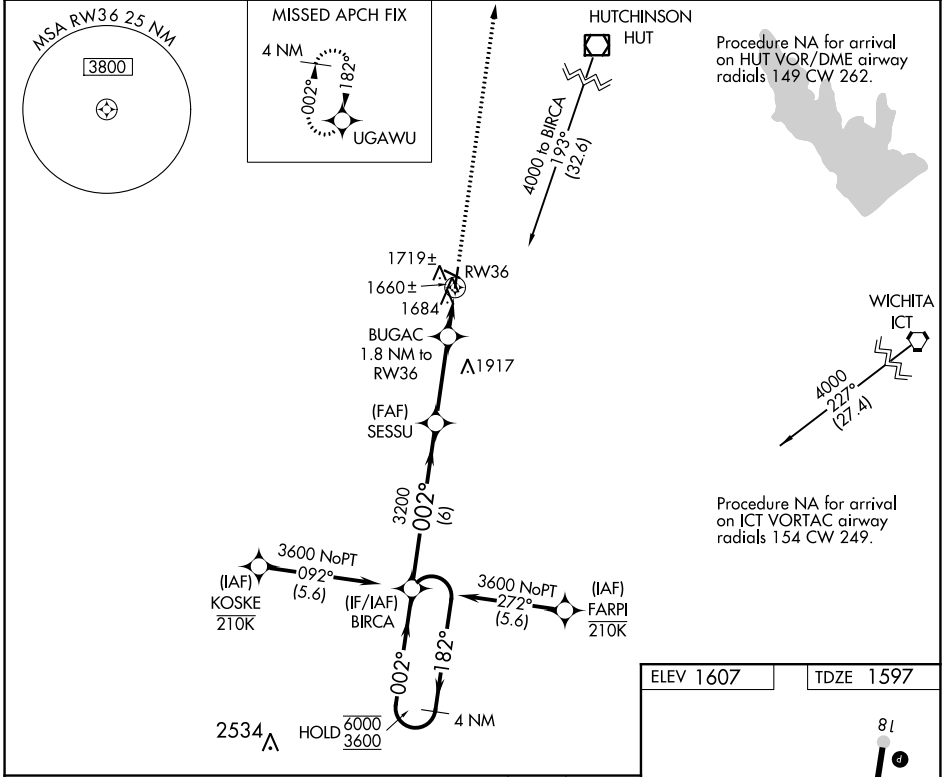
WAAS CH 82042 W36A	APP CRS 002°	Rwy Idg TDZE 1597 Apt Elev 1607	4300
--	------------------------	---	-------------

RNAV (GPS) RWY 36

KINGMAN/CLYDE CESSNA FLD (9K8)

RNP APCH.
 ▼ Rwy 36 helicopter visibility reduction below 3/4 SM NA. Circling Rwy 11, 29 NA at night.
 MISSED APPROACH: Climb to 3300 direct UGAWU and hold.

AWOS-3PT 119.325	WICHITA APP CON 125.5 306.2	UNICOM 122.8 (CTAF)
----------------------------	---------------------------------------	-------------------------------



CATEGORY	A	B	C	D
LP MDA	1920-1 323 (400-1)			NA
RNAV MDA	1980-1 383 (400-1)	1980-1 383 (400-1 1/8)		NA
CIRCLING	2040-1 433 (500-1)	2060-1 453 (500-1)	2160-1 553 (600-1 1/2)	NA

NC-2, 30 DEC 2021 to 27 JAN 2022

NC-2, 30 DEC 2021 to 27 JAN 2022