

APP CRS 305°	Rwy Idg 3704
	TDZE 151
	Apt Elev 151

RNAV (GPS) RWY 30

LIVINGSTON MUNI (ØØR)

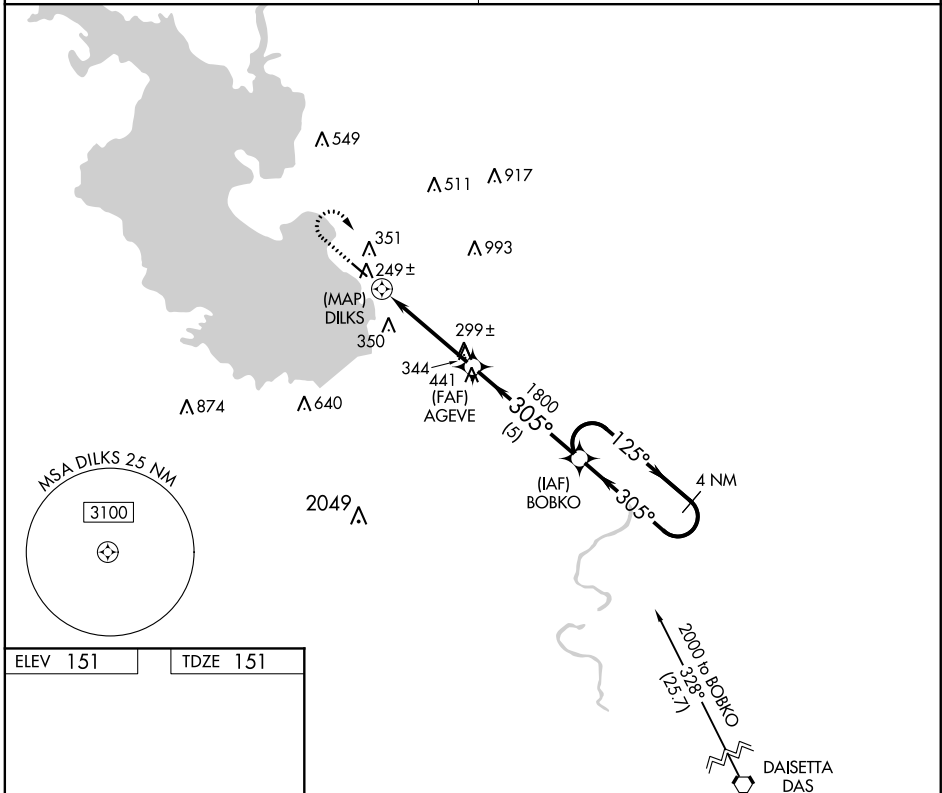
RNP APCH-GPS.

▼ Use Conroe/North Houston Rgnl altimeter setting. Rwy 30 helicopter
 ▲ NA visibility reduction below 1 SM NA. Night landing: Rwy 30 NA.

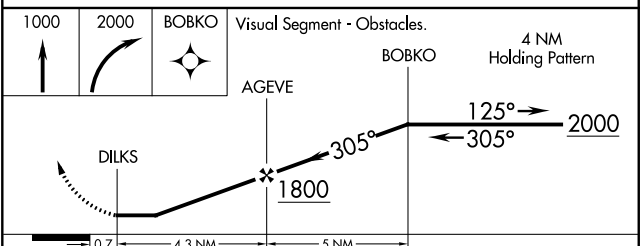
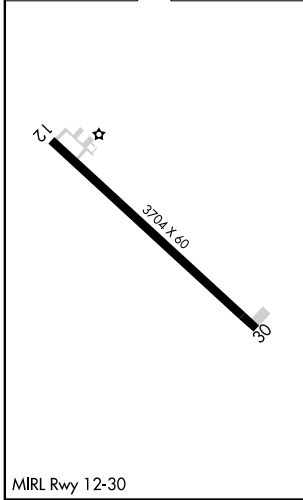
MISSED APPROACH: Climb to 1000 then climbing right turn to 2000 direct BOBKO WP and hold.

HOUSTON CENTER
125.175 285.575

UNICOM
122.7 (CTAF)



ELEV 151	TDZE 151
----------	----------



CATEGORY	A	B	C	D
LNAV MDA	680-1	529 (600-1)	620-1½ 469 (500-1½)	NA
CIRCLING	800-1	649 (700-1)	800-1¾ 649 (700-1¾)	NA

SC-5, 30 DEC 2021 to 27 JAN 2022

SC-5, 30 DEC 2021 to 27 JAN 2022