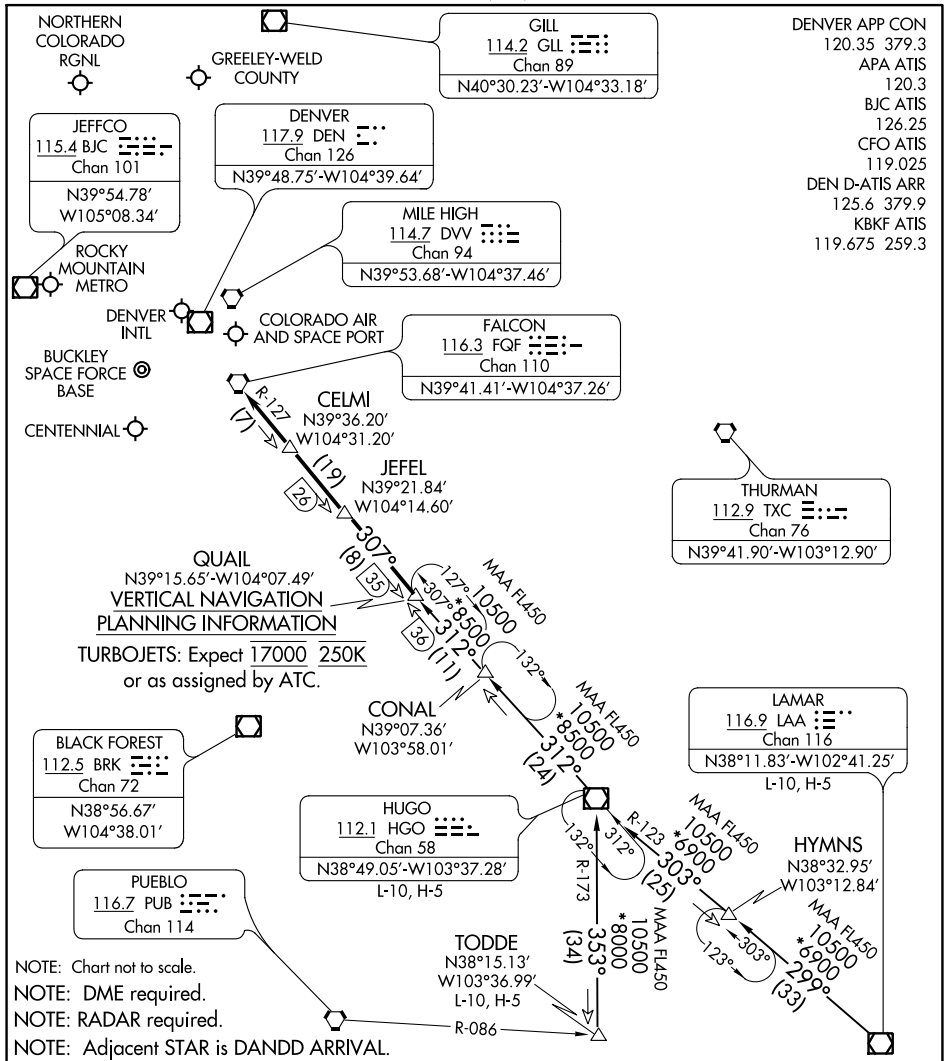


QUAIL ONE ARRIVAL

AL-9077 (FAA)

DENVER, COLORADO



- DENVER APP CON 120.35 379.3
- APA ATIS 120.3
- BJC ATIS 126.25
- CFO ATIS 119.025
- DEN D-ATIS ARR 125.6 379.9
- KBKF ATIS 119.675 259.3

SW-1, 30 DEC 2021 to 27 JAN 2022

SW-1, 30 DEC 2021 to 27 JAN 2022

NOTE: Chart not to scale.
 NOTE: DME required.
 NOTE: RADAR required.
 NOTE: Adjacent STAR is DANDD ARRIVAL.

ARRIVAL ROUTE DESCRIPTION

HUGO TRANSITION (HGO.QUAIL1): From over HGO VOR/DME on HGO R-312 to QUAIL. Thence. . .

LAMAR TRANSITION (LAA.QUAIL1): From over LAA VOR/DME on LAA R-299 and HGO R-123 to HGO VOR/DME, then on HGO R-312 to QUAIL. Thence. . .

TODDE TRANSITION (TODDE.QUAIL1): From over TODDE on HGO R-173 to HGO VOR/DME, then on HGO R-312 to QUAIL. Thence. . .

. . . from over QUAIL on HGO R-312 and FQF R-127 to FQF VORTAC. Expect RADAR vectors to the final approach course at or before FQF VORTAC.

QUAIL ONE ARRIVAL

(QUAIL.QUAIL1) 30JAN20

DENVER, COLORADO