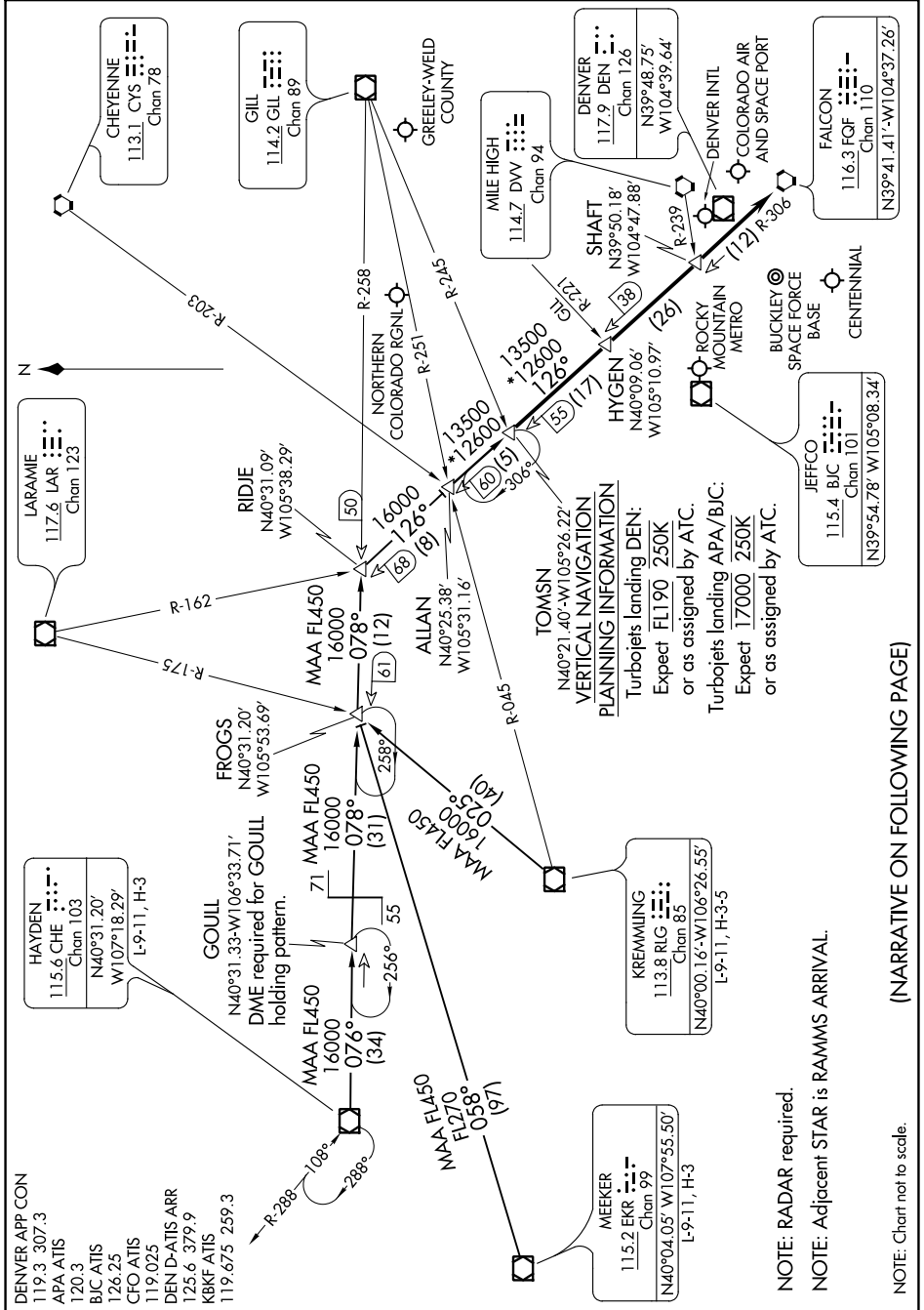


TOMSN EIGHT ARRIVAL

AL-9077 (FAA)

DENVER, COLORADO

SW-1, 30 DEC 2021 to 27 JAN 2022



- DENVER APP CON
119.3 307.3
- APA ATIS
- 120.3
- BJC ATIS
N40°31.20'
W107°18.29'
- 126.25
- CFO ATIS
- 119.025
- DEN D-ATIS ARR
125.6 379.9
- KBKF ATIS
- 119.675 259.3

- HAYDEN
115.6 CHE
Chan 103
N40°31.20'
W107°18.29'
- L-9-11, H-3
- GOULL
N40°31.33'-W106°33.71'
- DME required for GOULL
holding pattern.
- MAA FL450
16000
076°
(34)
- MAA FL450
16000
078°
(31)
- FROGS
N40°31.20'
W105°53.69'
- MAA FL450
16000
078°
(12)
- ALLAN
N40°25.38'
W105°31.16'
- MAA FL450
FL270
058°
(97)
- MEEKER
115.2 EKR
Chan 99
N40°04.05'-W107°55.50'
- L-9-11, H-3
- KREMMING
113.8 RIG
Chan 85
N40°00.16'-W106°26.55'
- L-9-11, H-3-5

NOTE: RADAR required.
 NOTE: Adjacent STAR is RAMMS ARRIVAL.

(NARRATIVE ON FOLLOWING PAGE)

NOTE: Chart not to scale.

TOMSN EIGHT ARRIVAL

DENVER, COLORADO

SW-1, 30 DEC 2021 to 27 JAN 2022