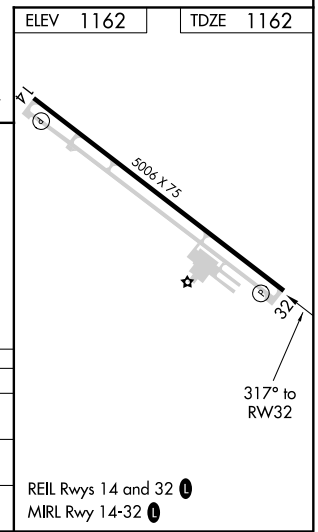
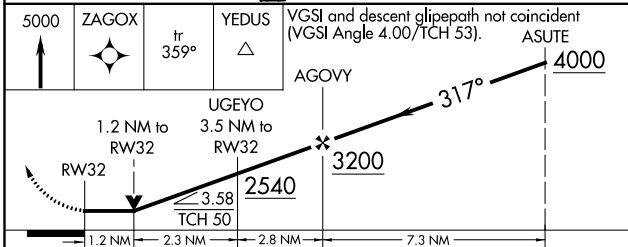
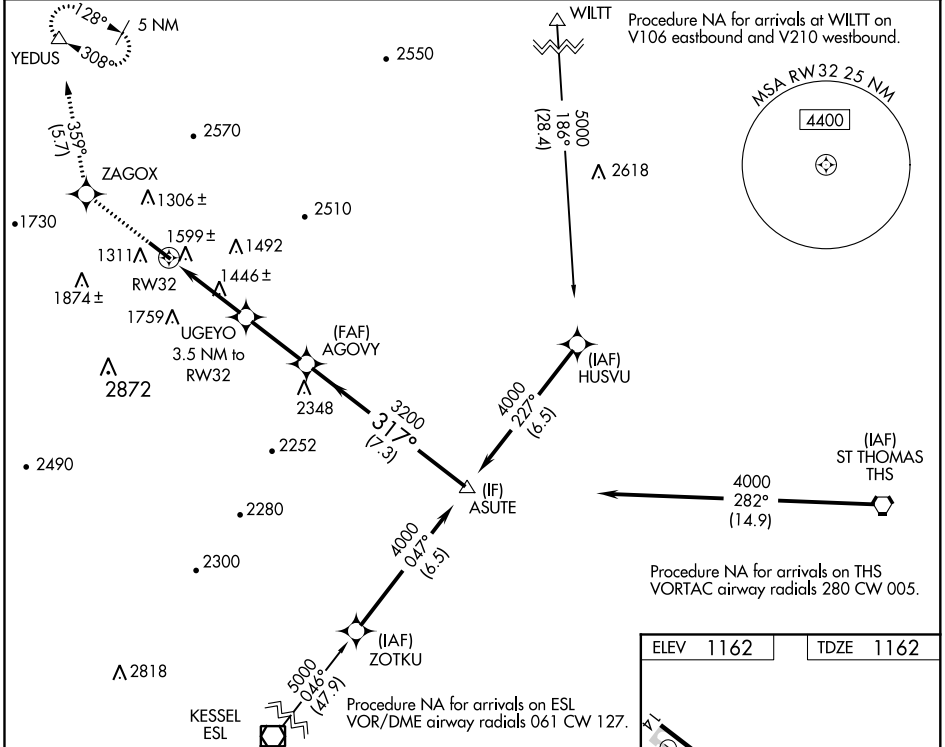


WAAS CH <b>90437</b> <b>W32A</b>	APP CRS <b>317°</b>	Rwy Idg TDZE Apt Elev	<b>5006</b> <b>1162</b> <b>1162</b>
--	------------------------	-----------------------------	---

# RNAV (GPS) RWY 32

BEDFORD COUNTY (HMIZ)

<p><b>NA</b> DME/DME RNP-0.3 NA. VDP NA when using Altoona altimeter setting. When local altimeter setting not received, use Altoona altimeter setting and increase all MDA 100 feet. Increase LP Cat C visibility ¼ mile. Increase LNAV Cat B visibility ½ mile and Cat C visibility ½ mile. Increase Circling Cats A and B visibility ¼ mile. Helicopter visibility reduction below ¼ SM NA.</p>	<p>MISSED APPROACH: Climb to 5000 direct ZAGOX and on track 359° to YEDUS and hold, continue climb-in-hold to 5000.</p>	
<p>AWOS-3 <b>123.675</b></p>	<p>JOHNSTOWN APP CON ★ <b>121.2 299.2</b></p>	<p>UNICOM <b>122.7 (CTAF) 0</b></p>



CATEGORY	A	B	C	D
LP MDA	1740-1	578 (600-1)	1740-1½ 578 (600-1½)	NA
LNAV MDA	1860-1	698 (700-1)	1860-2 698 (700-2)	NA
<b>C</b> CIRCLING	1900-1 738 (800-1)	1960-1 798 (800-1)	2200-3 1038 (1100-3)	NA

NE-4, 30 DEC 2021 to 27 JAN 2022

NE-4, 30 DEC 2021 to 27 JAN 2022