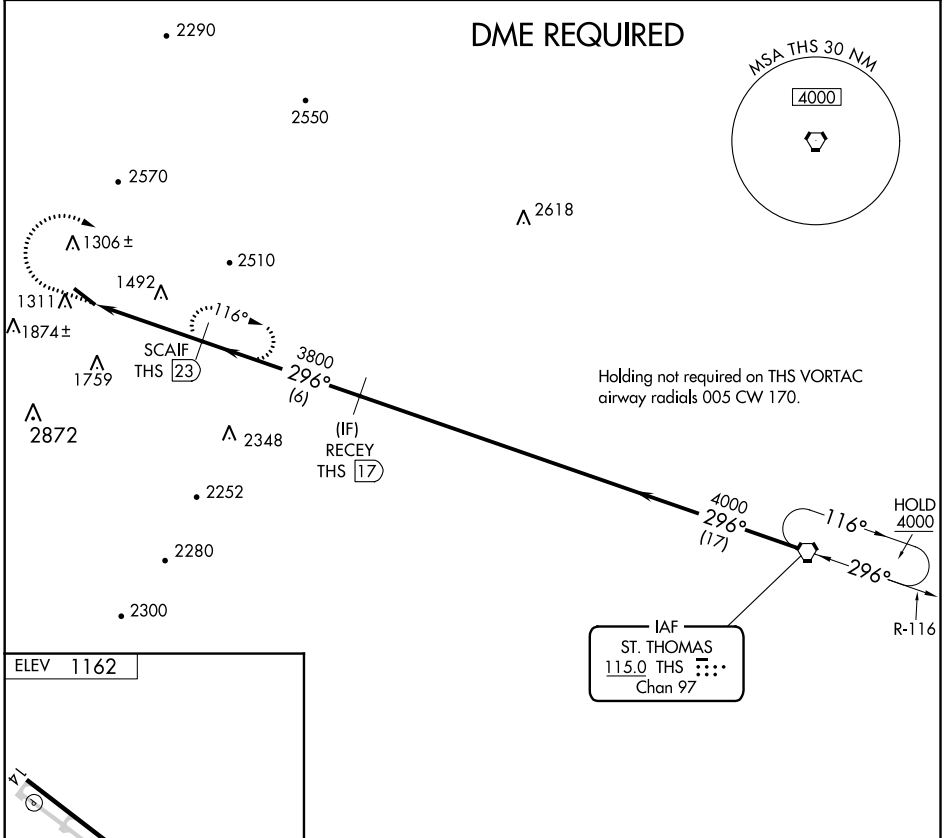


VORTAC THS 115.0 Chan 97	APP CRS 296°	Rwy Idg TDZE Apt Elev	N/A N/A 1162
--	------------------------	-----------------------------	---

VOR-A
BEDFORD COUNTY (HMZ)

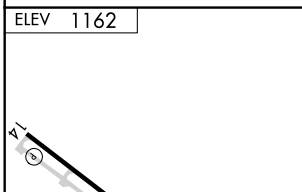
<p>▽ Helicopter visibility reduction below 3/4 SM NA. ▲ DME required.</p>	<p>MISSED APPROACH: Climb to 3200 then climbing right turn to 4000 on heading 150° and on THS VORTAC R-296 to SCAIF/23 DME and hold.</p>
---	--

AWOS-3 123.675	JOHNSTOWN APP CON * 121.2 299.2	UNICOM 122.7 (CTAF) 0
--------------------------	---	---------------------------------



NE-4, 30 DEC 2021 to 27 JAN 2022

NE-4, 30 DEC 2021 to 27 JAN 2022



<p>REIL Rwys 14 and 32 MIRL Rwy 14-32</p>	<p>3200</p>	<p>4000</p>	<p>THS R-296</p>	<p>SCAIF THS 23</p>	<p>RECEY THS 17</p>	<p>THS VORTAC</p>
	<p>↑</p>	<p>hdg 150°</p>				
<p>4.1 NM</p>	<p>6 NM</p>	<p>17 NM</p>	<p>THS 27.1</p>	<p>SCAIF THS 23</p>	<p>3800</p>	<p>296°</p>
<p>4.1 NM</p>	<p>6 NM</p>	<p>17 NM</p>	<p>4000</p>	<p>4000</p>	<p>4000</p>	<p>4000</p>
<p>FAF to MAP 4.1 NM</p>	<p>CATEGORY</p>	<p>A</p>	<p>B</p>	<p>C</p>	<p>D</p>	
<p>Knots 60 90 120 150 180</p>	<p>CIRCLING</p>	<p>2700-1¼ 1538 (1600-1¼)</p>	<p>2700-1½ 1538 (1600-1½)</p>	<p>2700-3 1538 (1600-3)</p>	<p>2940-3 1778 (1800-3)</p>	
<p>Min:Sec 4:06 2:44 2:03 1:38 1:22</p>						