

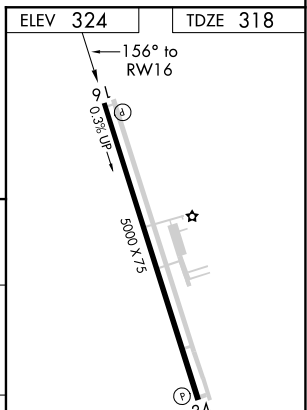
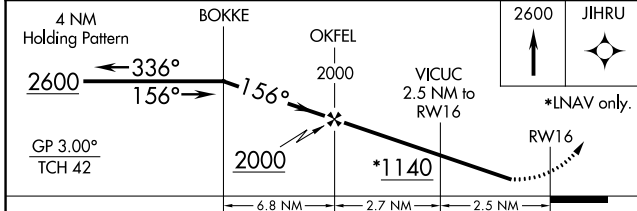
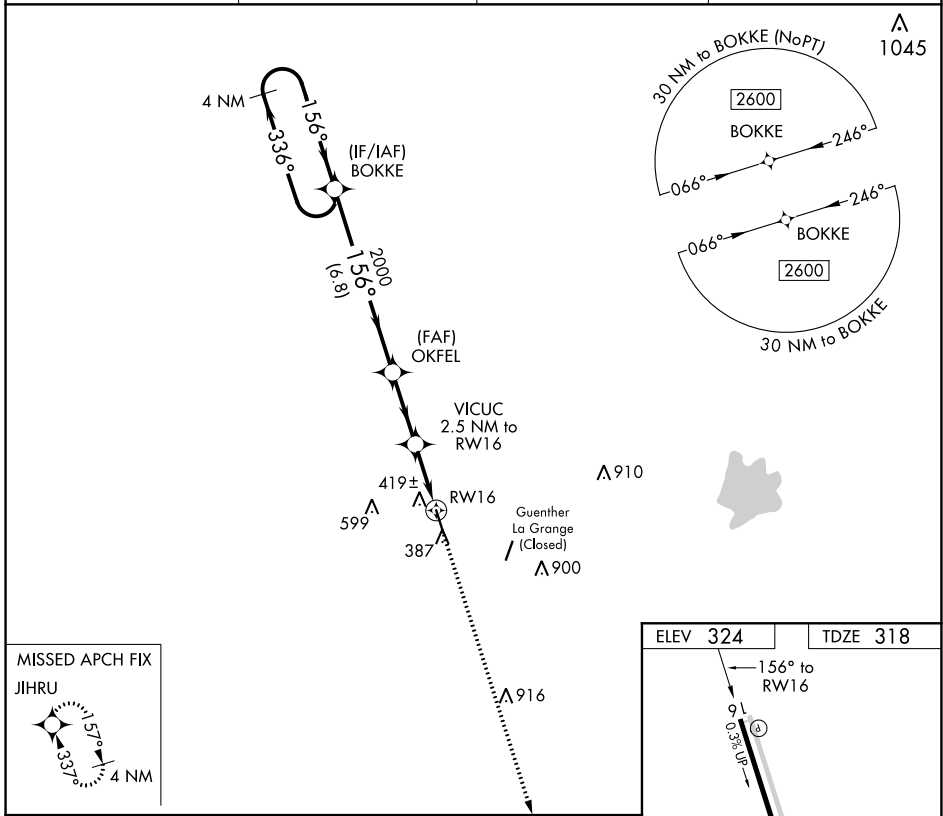
WAAS CH 42928 W16A	APP CRS 156°	Rwy Idg TDZE Apt Elev	5000 318 324
--	------------------------	-----------------------------	---

RNAV (GPS) RWY 16

FAYETTE RGNL AIR CENTER (3T5)

RNP APCH.	<p>When local altimeter setting not received, use Giddings-Lee altimeter setting and increase DA 59 feet, all MDA 60 feet, increase LNAV Cat C visibility 1/4 mile. Rwy 16 helicopter visibility reduction below 3/4 SM NA.</p>	MISSED APPROACH: Climb to 2600 direct JIHU and hold.
-----------	---	--

AWOS-3 124.175	AUSTIN APP CON 120.875 270.25	GCO 121.725	UNICOM 122.7 (CTAF) 0
--------------------------	---	-----------------------	---------------------------------



CATEGORY	A	B	C	D
LPV DA	568-1	250 (300-1)		NA
LNAV MDA	680-1	362 (400-1)		NA

REIL Rwy 16 and 34
MIRL Rwy 16-34 0

SC-5, 30 DEC 2021 to 27 JAN 2022

SC-5, 30 DEC 2021 to 27 JAN 2022