

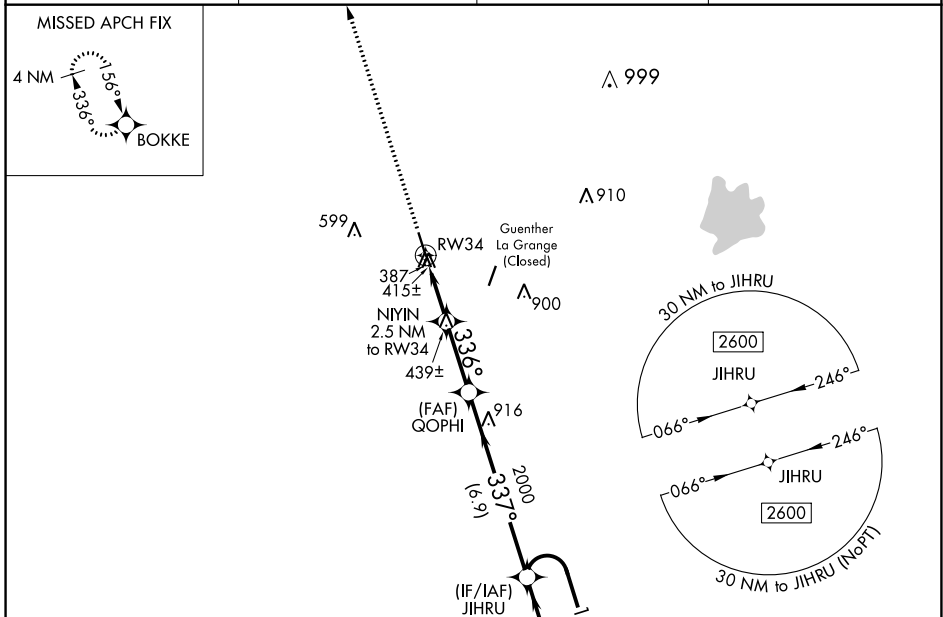
WAAS CH <b>86929</b> <b>W34A</b>	APP CRS <b>336°</b>	Rwy Idg TDZE Apt Elev	<b>5000</b> <b>324</b> <b>324</b>
----------------------------------------	------------------------	-----------------------------	-----------------------------------------

# RNAV (GPS) RWY 34

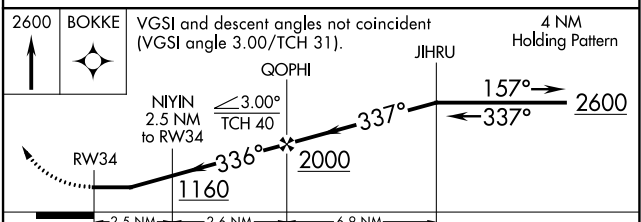
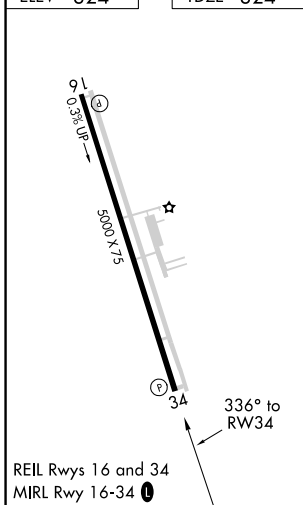
FAYETTE RGNL AIR CENTER (3T5)

RNP APCH.	MISSED APPROACH: Climb to 2600 direct BOKKE and hold.
<p>⚠ When local altimeter setting not received, use Giddings-Lee altimeter setting and increase all MDA 60 feet, increase LP and LNAV Cat C visibility ¼ mile. Rwy 34 helicopter visibility reduction below ¾ SM NA.</p>	

AWOS-3 <b>124.175</b>	AUSTIN APP CON <b>120.875 270.25</b>	GCO <b>121.725</b>	UNICOM <b>122.7 (CTAF) 0</b>
--------------------------	-----------------------------------------	-----------------------	---------------------------------



ELEV <b>324</b>	TDZE <b>324</b>
-----------------	-----------------



CATEGORY	A	B	C	D
LP MDA	700-1 376 (400-1)			NA
LNAV MDA	740-1 416 (500-1)		740-1½ 416 (500-1½)	NA

SC-5, 30 DEC 2021 to 27 JAN 2022

SC-5, 30 DEC 2021 to 27 JAN 2022